

3557 SE HAWTHORNE BLVD

Portland, OR 97214

FOR LEASE



RETAIL SPACE AVAILABLE FOR LEASE

DETAILS

- Suite 102: ± 3,742 SF
 - Suite 103: ± 1,316 SF
 - Lease rate: Call for details/terms/NNN
- Can be combined for ± 5,058 SF*

FEATURES

- Suite 102, ± 3,742 SF
 - Open retail layout
- Suite 103, ± 1,316 SF
 - Partial food use build-out (needs to be completed, not turn key)
 - FF&E opportunity with grease receptacle, walk-in coolers, and sinks
- Pylon signage
- Outdoor patio seating
- 30 on-site parking spaces

AREA FEATURES

- Prime inline retail space in the heart of the Hawthorne shopping district
- Walkers Paradise score of (98) located within strong retail and residential presence
- Neighboring retailers include: Dosha Salon, Harlow, McMenamins Bagdad Theater, Powell Books, Wells Fargo, Fred Meyer



For more information or a property tour, please contact:

LUIS MARTIN DEL CAMPO

503.416.8422

LuisM@norris-stevens.com



Information contained herein has been obtained from others and considered to be reliable; however, a prospective purchaser or lessee is expected to verify all information to their own satisfaction.

Norris & Stevens

INVESTMENT REAL ESTATE SERVICES

900 SW 5th Avenue • 17th Floor • Portland, OR 97204

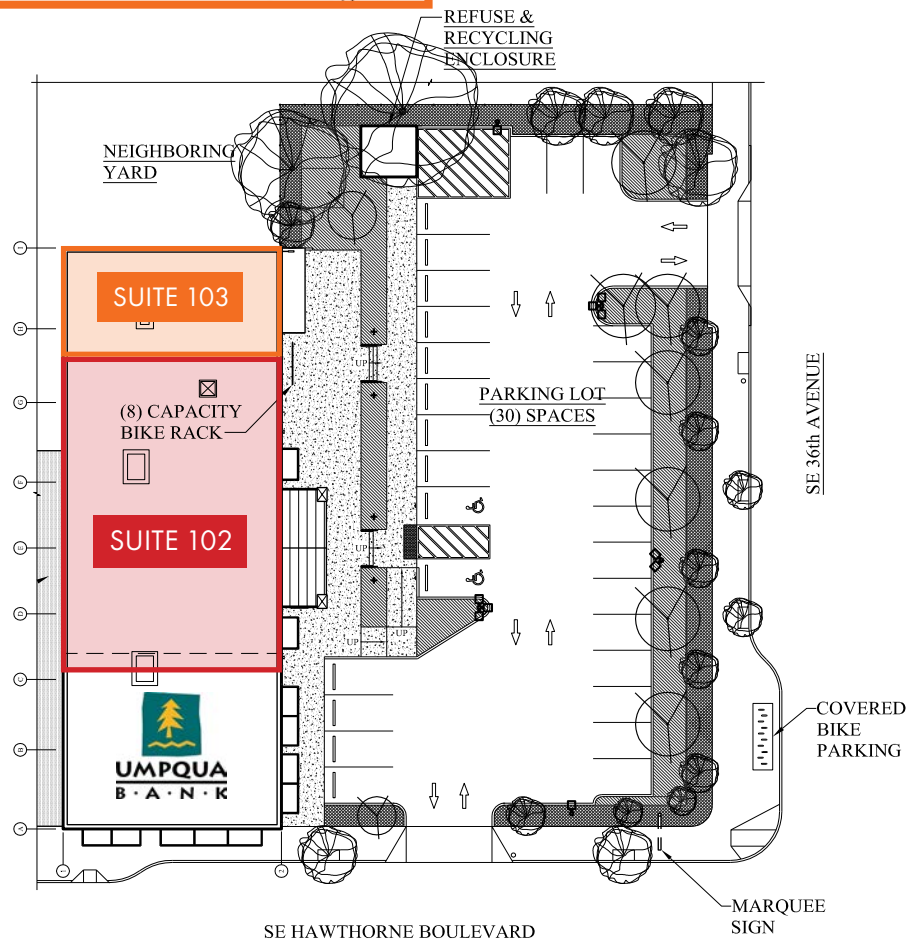
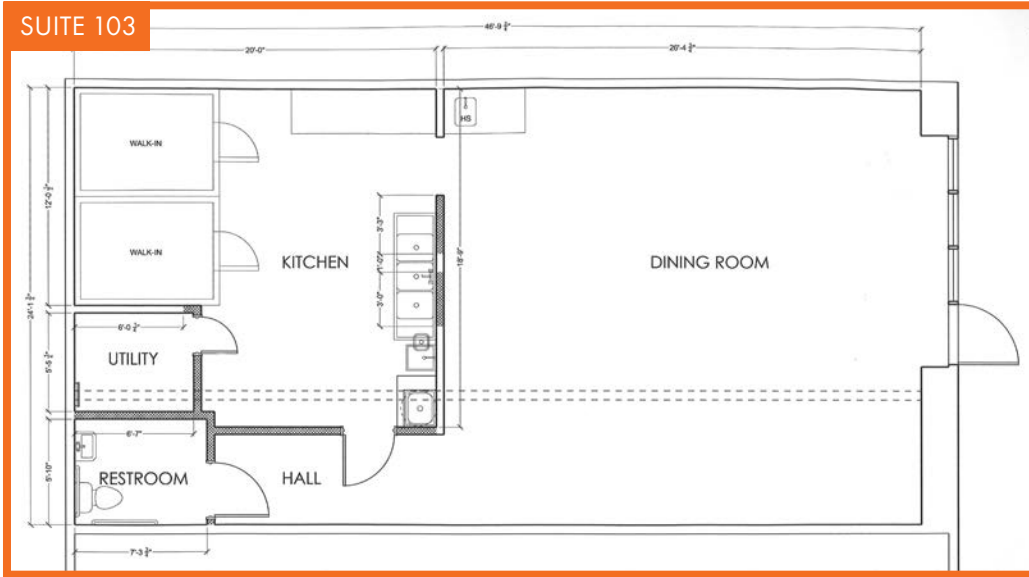
503.223.3171 • norris-stevens.com

3557 SE HAWTHORNE BLVD

Portland, OR 97214

FOR LEASE

PHOTOS & SITE PLAN



For more information or a property tour, please contact:

LUIS MARTIN DEL CAMPO

503.416.8422

LuisM@norris-stevens.com



Information contained herein has been obtained from others and considered to be reliable; however, a prospective purchaser or lessee is expected to verify all information to their own satisfaction.

Norris & Stevens

INVESTMENT REAL ESTATE SERVICES

900 SW 5th Avenue • 17th Floor • Portland, OR 97204

503.223.3171 • norris-stevens.com