

FOR SUBLEASE



## TEMPERATURE CONTROLLED/ GENERAL WAREHOUSE

6750-6770 SW 111TH AVE | BEAVERTON, OR 97008

For more information or a property tour, please contact:

**GREG NESTING**

503.225.8440

GregN@norris-stevens.com

Information contained herein has been obtained from others and considered to be reliable; however, a prospective purchaser or lessee is expected to verify all information to their own satisfaction.

01/21/2026

**Norris & Stevens**

INVESTMENT REAL ESTATE SERVICES



900 SW 5TH AVE, 17TH FLOOR | PORTLAND, OR 97204  
503.223.3171 • NORRIS-STEVENS.COM

# TEMPERATURE CONTROLLED/ GENERAL WAREHOUSE

6750-6770 SW 111th Ave | Beaverton, OR 97008

## WAREHOUSE SPACE FOR SUBLEASE

### DETAILS

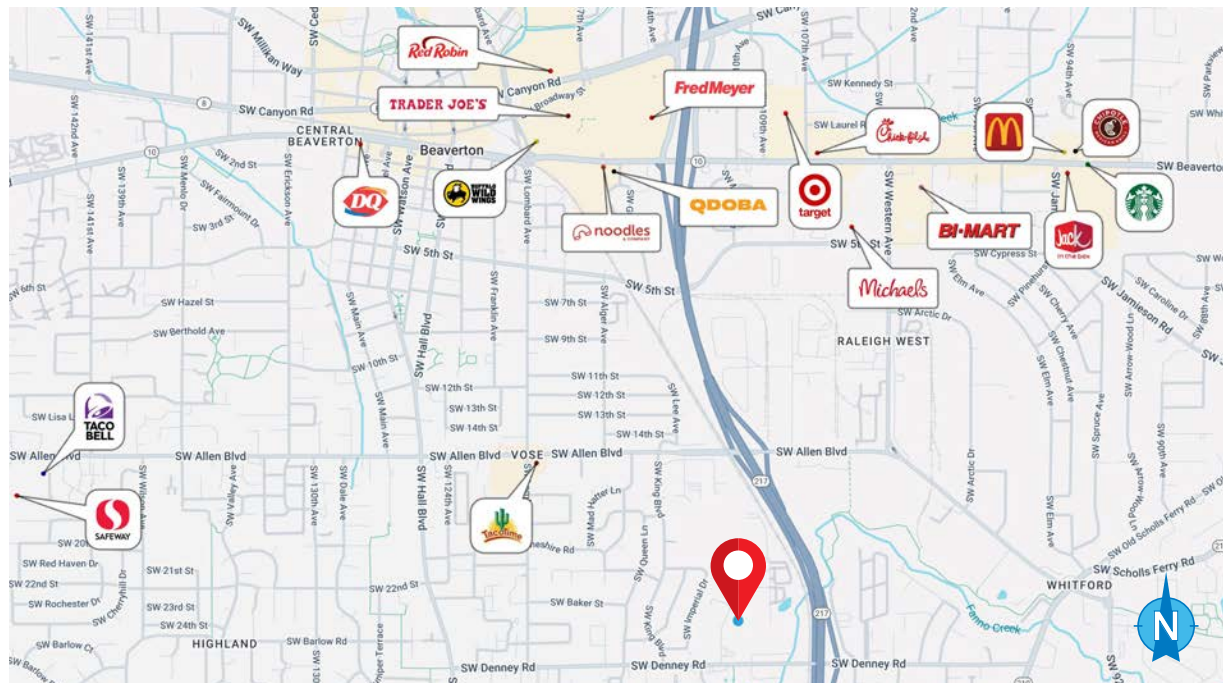
- Shell size: ± 26,819 SF
- Temp-controlled space: ± 15,217 SF
- Office size: ± 3,285 SF
- Additional office: ± 1,957 SF on 2nd level
- Mezzanine: ± 1,010 SF storage
- Docks: 6 (six) doors
- Grade loading: 2 (two) doors
- Rate: \$0.90 PSF, NNN on shell

### FEATURES

- Ideal for food processing/distribution
- Clear height 20' and cooler clear height 18.5'
- Approx. 277/480v, 3p, 1600 amps
- Floor drains
- Glycol chilling system
- Climate controlled loading storage
- Fenced yard area
- Off-street parking
- Can offer long term lease
- Near Hwy 217
- Minutes from Washington Square Mall and central Beaverton

### DEMOGRAPHICS

	1 Mile	3 Miles	5 Miles
Population	15,756	141,855	360,792
Median Age	38.5	39.6	39.8
Households	6,627	60,594	149,134
Median Household Income	\$84,548	\$105,038	\$119,784



For more information or a property tour, please contact:

**GREG NESTING**

503.225.8440

GregN@norris-stevens.com

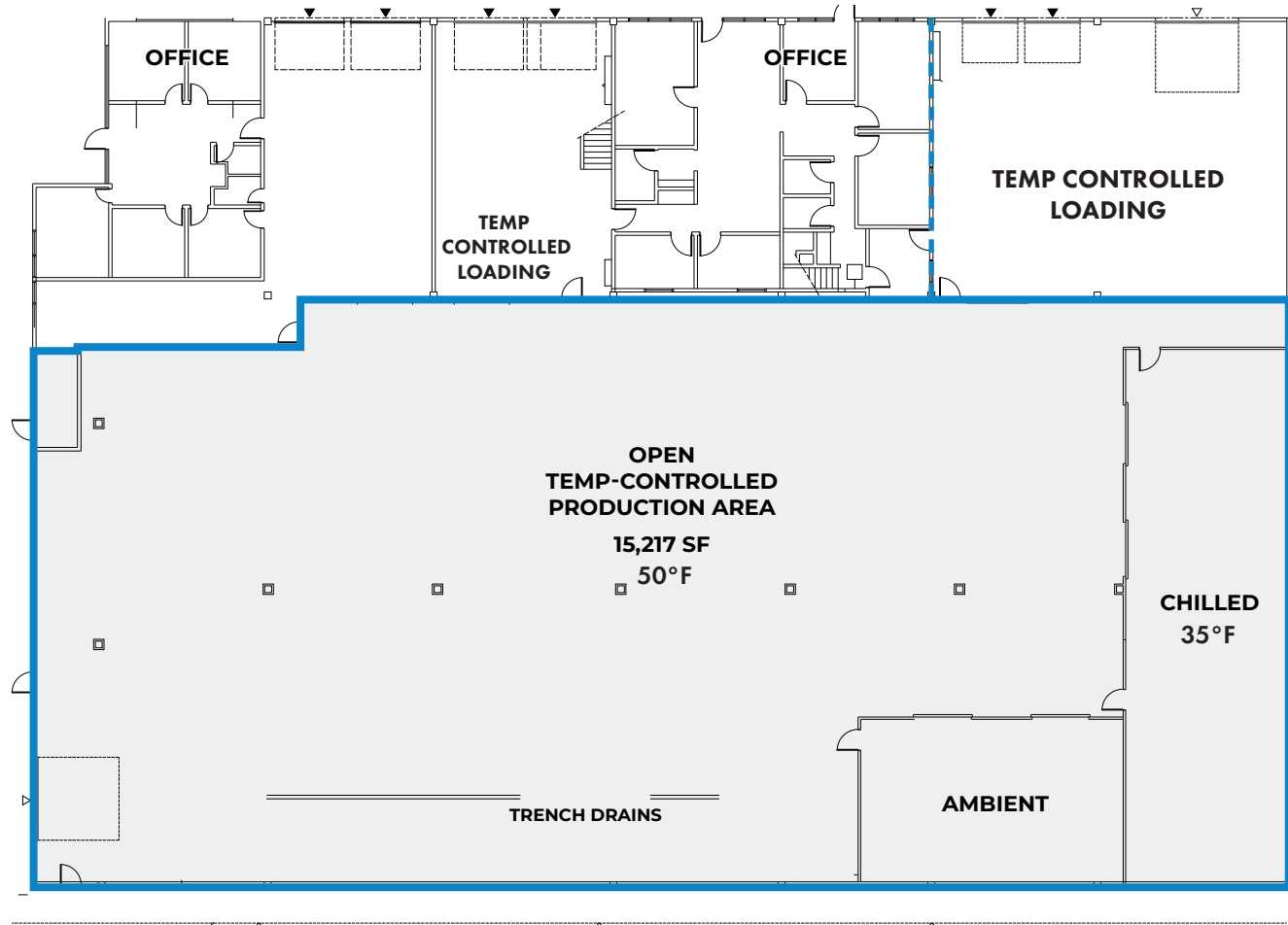
Information contained herein has been obtained from others and considered to be reliable; however, a prospective purchaser or lessee is expected to verify all information to their own satisfaction.

## Norris & Stevens

INVESTMENT REAL ESTATE SERVICES



900 SW 5TH AVE, 17TH FLOOR | PORTLAND, OR 97204  
503.223.3171 • NORRIS-STEVENS.COM



▲ DOCK DOOR

△ GRADE DOOR

For more information or a property tour, please contact:

**GREG NESTING**

503.225.8440

GregN@norris-stevens.com

Information contained herein has been obtained from others and considered to be reliable; however, a prospective purchaser or lessee is expected to verify all information to their own satisfaction.

# Norris & Stevens

INVESTMENT REAL ESTATE SERVICES



900 SW 5TH AVE, 17TH FLOOR | PORTLAND, OR 97204  
503.223.3171 • NORRIS-STEVENSON.COM

## PROPERTY PHOTOS



YARD AREA



LOADING



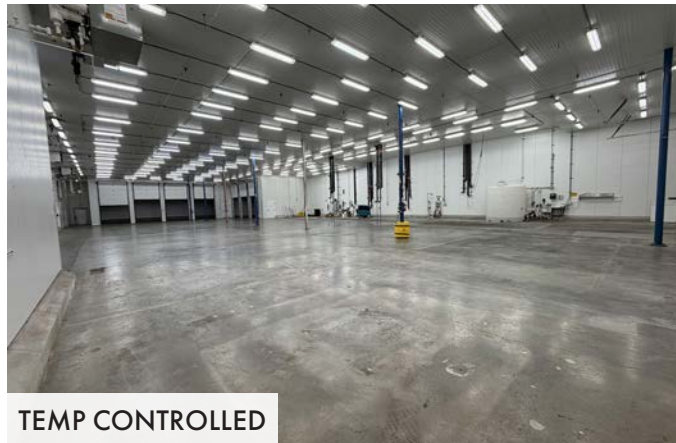
## TEMPERATURE CONTROLLED/ GENERAL WAREHOUSE

6750-6770 SW 111th Ave | Beaverton, OR 97008

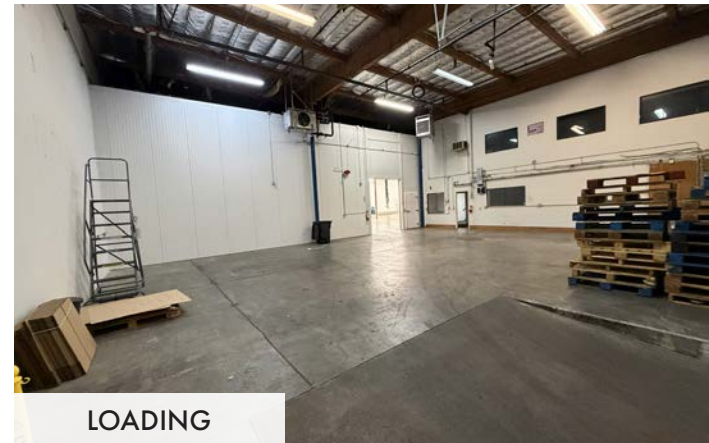
TEMP CONTROLLED



POWER



TEMP CONTROLLED



LOADING



WEST OFFICE



MAIN OFFICE



2ND FLOOR OFFICE

For more information or a property tour, please contact:

**GREG NESTING**

503.225.8440

GregN@norris-stevens.com

Information contained herein has been obtained from others and considered to be reliable; however, a prospective purchaser or lessee is expected to verify all information to their own satisfaction.

# Norris & Stevens

INVESTMENT REAL ESTATE SERVICES

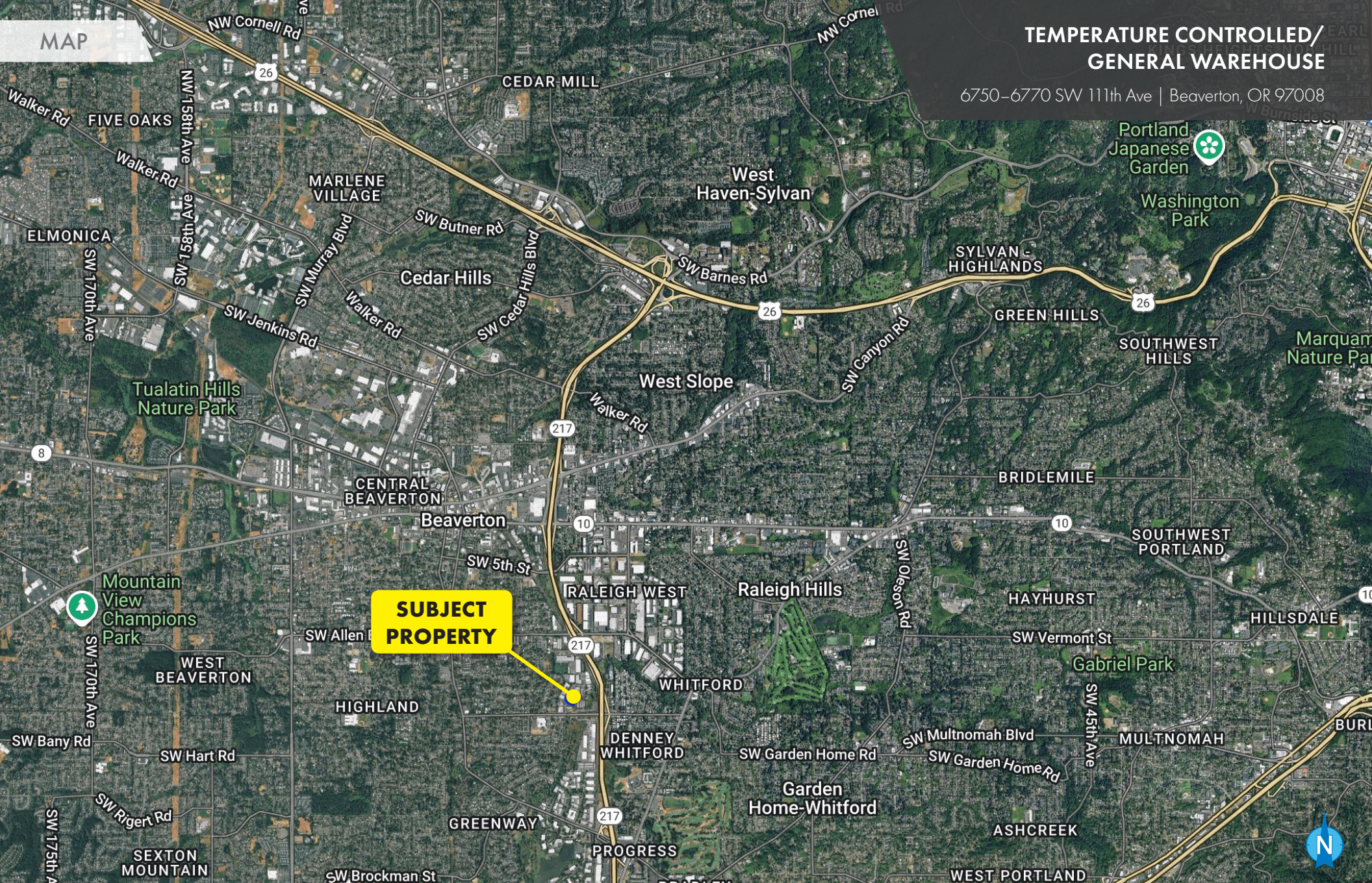


900 SW 5TH AVE, 17TH FLOOR | PORTLAND, OR 97204  
503.223.3171 • NORRIS-STEVENS.COM

MAP

## TEMPERATURE CONTROLLED/ GENERAL WAREHOUSE

6750-6770 SW 111th Ave | Beaverton, OR 97008



**SUBJECT  
PROPERTY**

For more information or a property tour, please contact:

**GREG NESTING**

503.225.8440

GregN@norris-stevens.com

Information contained herein has been obtained from others and considered to be reliable; however, a prospective purchaser or lessee is expected to verify all information to their own satisfaction.

# Norris & Stevens

INVESTMENT REAL ESTATE SERVICES



900 SW 5TH AVE, 17TH FLOOR | PORTLAND, OR 97204  
503.223.3171 • NORRIS-STEVENS.COM