

9400 PLACE

9340 - 9400 SW Beaverton Hillsdale Hwy | Beaverton, OR 97005

FOR LEASE



OFFICE SPACE AVAILABLE FOR LEASE

BUILDING 9400 - \$21 PSF, FS

SECOND FLOOR

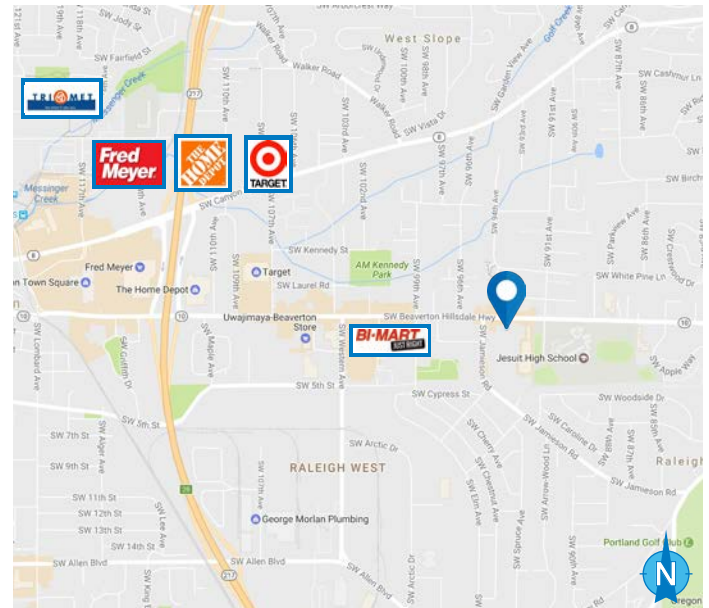
- SUITE 200 - 5,495 RSF

THIRD FLOOR

- FULL FLOOR HEADQUARTERS SUITE - 35,067 RSF

FEATURES

- Bright, natural light with offices along window line
- Courtyard setting; elevator served
- Professionally managed
- Ample parking with 3.5/1000 ratio
- Along SW Beaverton Hillsdale Highway
- Adjacent to Jesuit High School
- Walk to amenities; close to Beaverton Town Square
- Easy access to 217
- Safe, secure building with 24/7 tenant access
- Washington County taxes



01.23.2026

For more information or a property tour, please contact:

DUANE LINK

503.225.8465

Duanel@norris-stevens.com

Norris & Stevens

INVESTMENT REAL ESTATE SERVICES



Information contained herein has been obtained from others and considered to be reliable; however, a prospective purchaser or lessee is expected to verify all information to their own satisfaction.

900 SW 5th Avenue • 17th Floor • Portland, OR 97204
503.223.3171 • norris-stevens.com

9400 PLACE

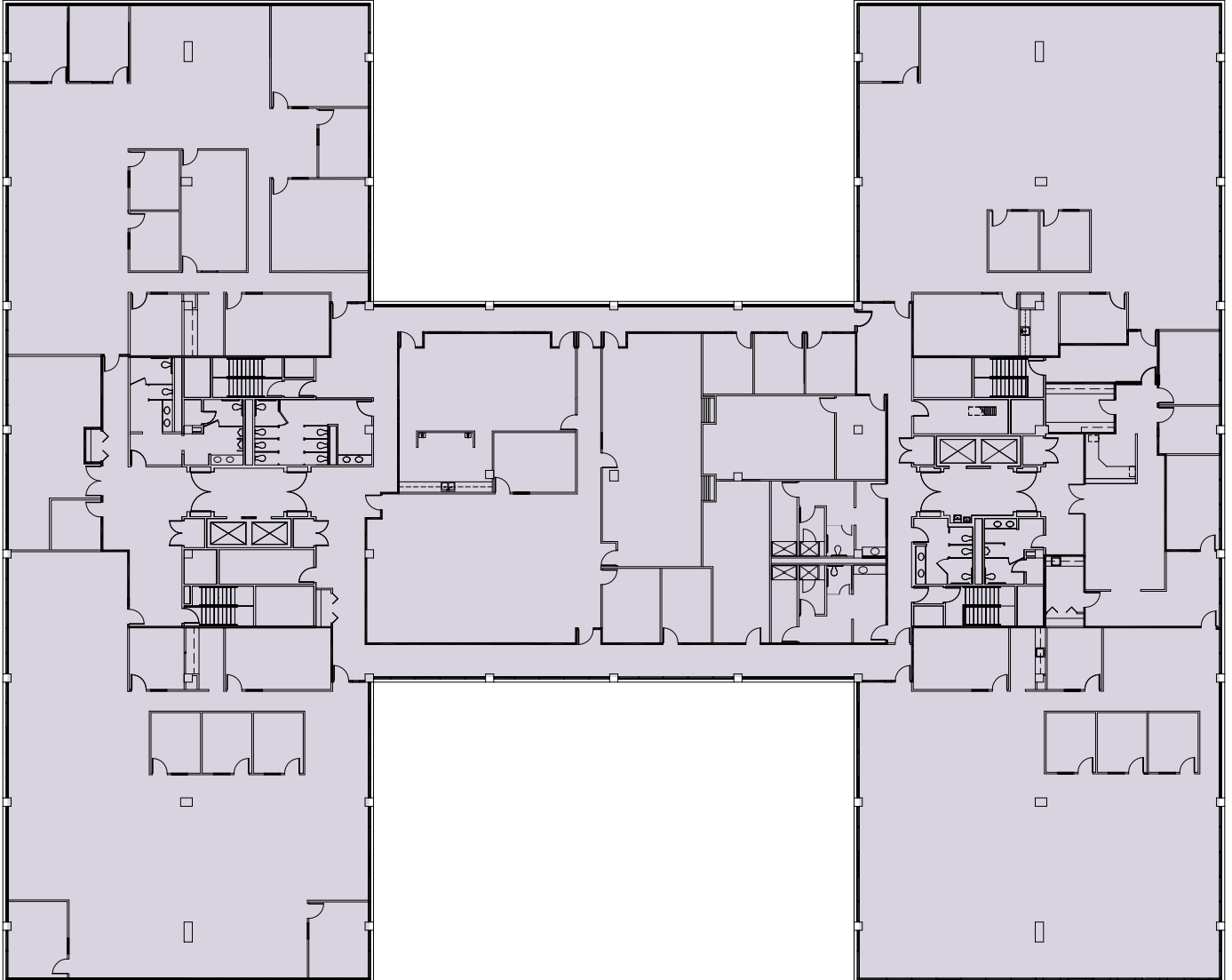
9340 - 9400 SW Beaverton Hillsdale Hwy | Beaverton, OR 97005

FOR LEASE

FLOOR PLANS

BUILDING 9400 THIRD FLOOR

FULL FLOOR HEADQUARTERS SUITE AVAILABLE - 35,067 RSF



For more information or a property tour, please contact:

DUANE LINK

503.225.8465

Duanel@norris-stevens.com

Norris & Stevens

INVESTMENT REAL ESTATE SERVICES



Information contained herein has been obtained from others and considered to be reliable; however, a prospective purchaser or lessee is expected to verify all information to their own satisfaction.

900 SW 5th Avenue • 17th Floor • Portland, OR 97204
503.223.3171 • norris-stevens.com

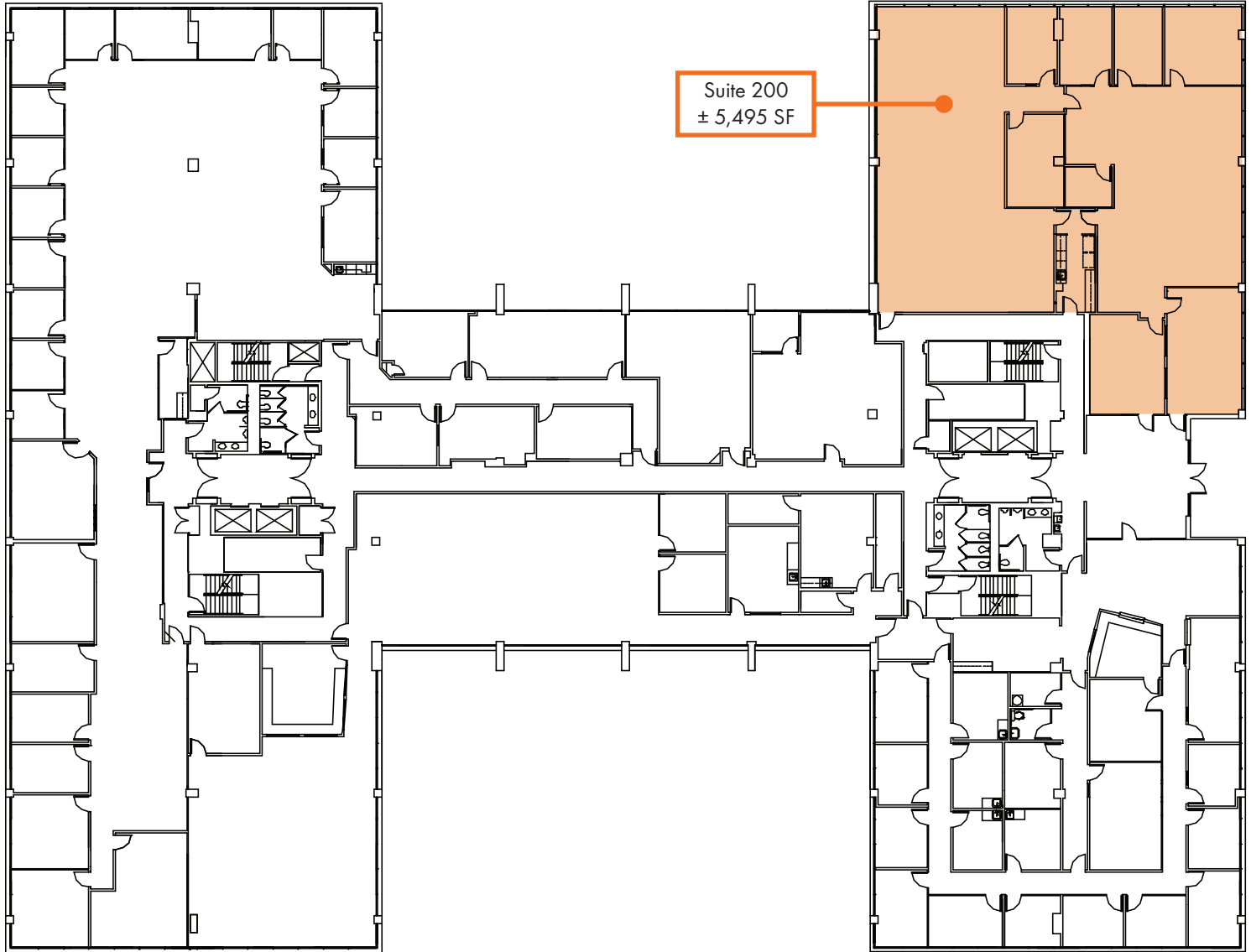
9400 PLACE

9340 - 9400 SW Beaverton Hillsdale Hwy | Beaverton, OR 97005

FOR LEASE

FLOOR PLANS

BUILDING 9400 SECOND FLOOR



For more information or a property tour, please contact:

DUANE LINK

503.225.8465

Duanel@norris-stevens.com

Norris & Stevens

INVESTMENT REAL ESTATE SERVICES



Information contained herein has been obtained from others and considered to be reliable; however, a prospective purchaser or lessee is expected to verify all information to their own satisfaction.

900 SW 5th Avenue • 17th Floor • Portland, OR 97204
503.223.3171 • norris-stevens.com