

14000-14020 SE JOHNSON ROAD

Portland, OR 97267

FOR LEASE



SPACE AVAILABLE FOR LEASE

DETAILS

Rate: Call for lease rate

14000 Building

- Suite: 200 ±1,385 RSF

14200 Building

- Suite: 208 ± 657 RSF
- Suite: 206 ± 1,774 RSF
- Suites 206 & 208 can be combined for a total of 1,774 RSF

FEATURES

- 47 Parking spaces
- Great Access from I-205, highways 224 and 99E
- 5 minutes from Clackamas Town Center and other retailers
- 15 minutes to Portland CBD



08.07.2025

For more information or a property tour, please contact:

TIM PFEIFFER

503.225.8455

TimP@norris-stevens.com

Norris & Stevens

INVESTMENT REAL ESTATE SERVICES



Information contained herein has been obtained from others and considered to be reliable; however, a prospective purchaser or lessee is expected to verify all information to their own satisfaction.

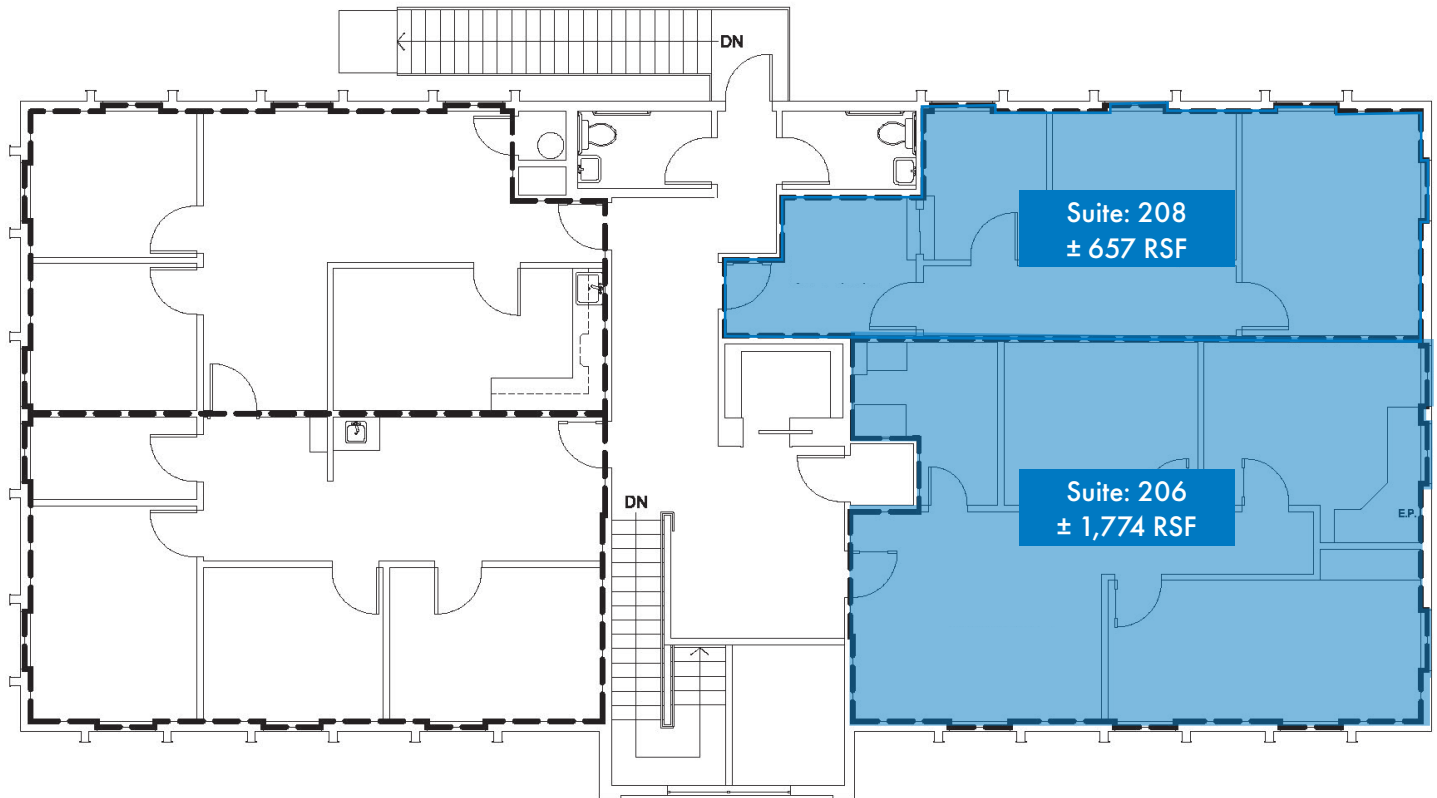
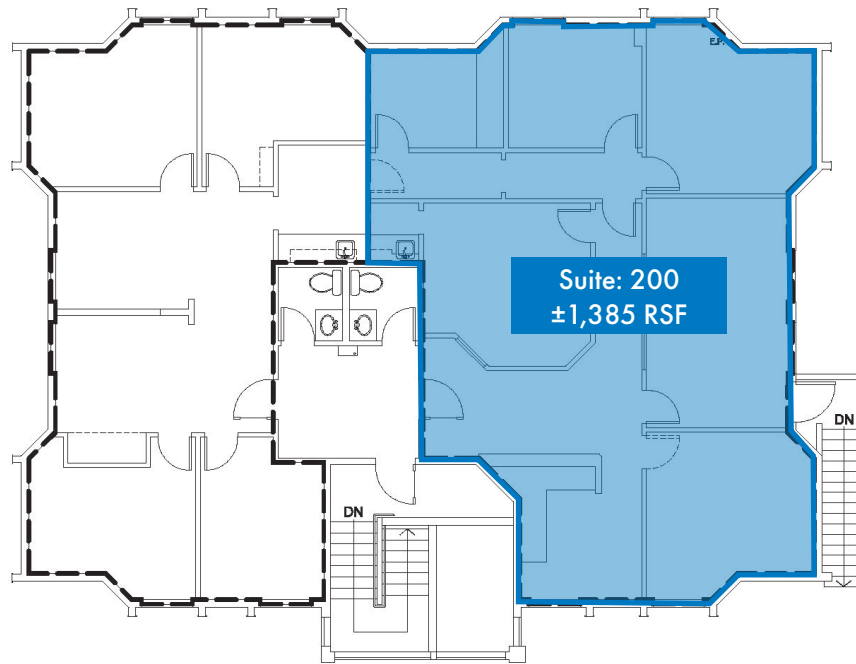
900 SW 5th Avenue • 17th Floor • Portland, OR 97204
503.223.3171 • norris-stevens.com

14000-14020 SE JOHNSON ROAD

Portland, OR 97267

FOR LEASE

Floor Plans



For more information or a property tour, please contact:

TIM PFEIFFER

503.225.8455

TimP@norris-stevens.com

Norris & Stevens

INVESTMENT REAL ESTATE SERVICES

TCN
WORLDWIDE
REAL ESTATE SERVICES

AMO

Information contained herein has been obtained from others and considered to be reliable; however, a prospective purchaser or lessee is expected to verify all information to their own satisfaction.

900 SW 5th Avenue • 17th Floor • Portland, OR 97204
503.223.3171 • norris-stevens.com

14000-14020 SE JOHNSON ROAD

Portland, OR 97267

FOR LEASE

PHOTOS



For more information or a property tour, please contact:

TIM PFEIFFER

503.225.8455

TimP@norris-stevens.com



Information contained herein has been obtained from others and considered to be reliable; however, a prospective purchaser or lessee is expected to verify all information to their own satisfaction.

Norris & Stevens

INVESTMENT REAL ESTATE SERVICES

900 SW 5th Avenue • 17th Floor • Portland, OR 97204
503.223.3171 • norris-stevens.com