

CLACKAMAS RIVER PLAZA

15 82nd Dr | Gladstone, OR 97027

FOR LEASE



OFFICE SPACE AVAILABLE FOR LEASE

DETAILS

- Suite 60: ± 377 SF
- Suite 180: $\pm 2,079$ SF
- Suite 240: $\pm 1,920$ SF
- Suite 250: $\pm 4,279$ SF
- Rate: Call for lease rate

FEATURES

- 60 Surface parking spaces
- Professionally managed
- Great window line with river views
- Waterfront property
- Easy access to I-205



09.19.2025

For more information or a property tour, please contact:

TIM PFEIFFER

503.225.8455

TimP@norris-stevens.com



Information contained herein has been obtained from others and considered to be reliable; however, a prospective purchaser or lessee is expected to verify all information to their own satisfaction.

Norris & Stevens

INVESTMENT REAL ESTATE SERVICES

900 SW 5th Avenue • 17th Floor • Portland, OR 97204
503.223.3171 • norris-stevens.com

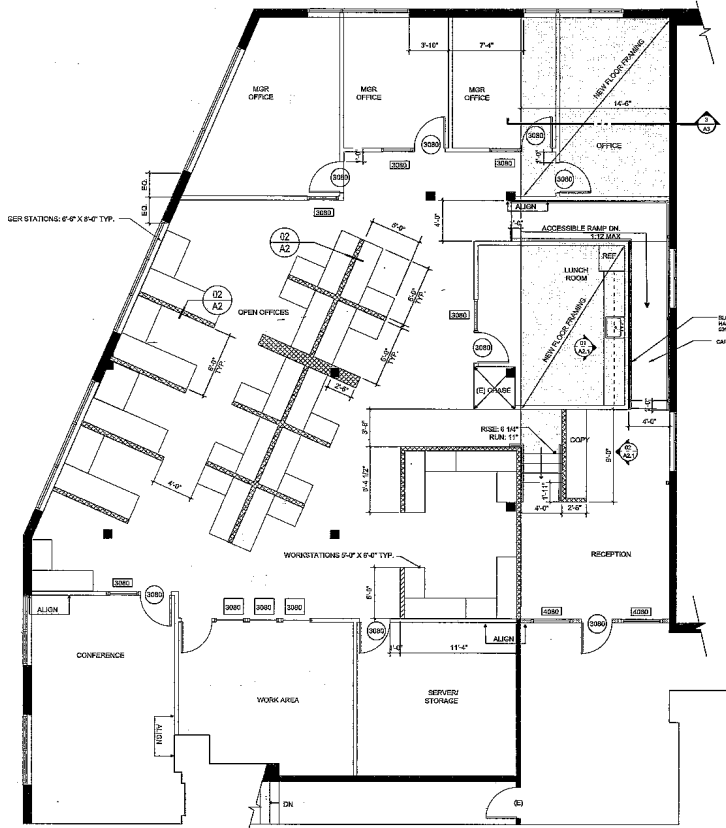
CLACKAMAS RIVER PLAZA

15 82nd Dr | Gladstone, OR 97027

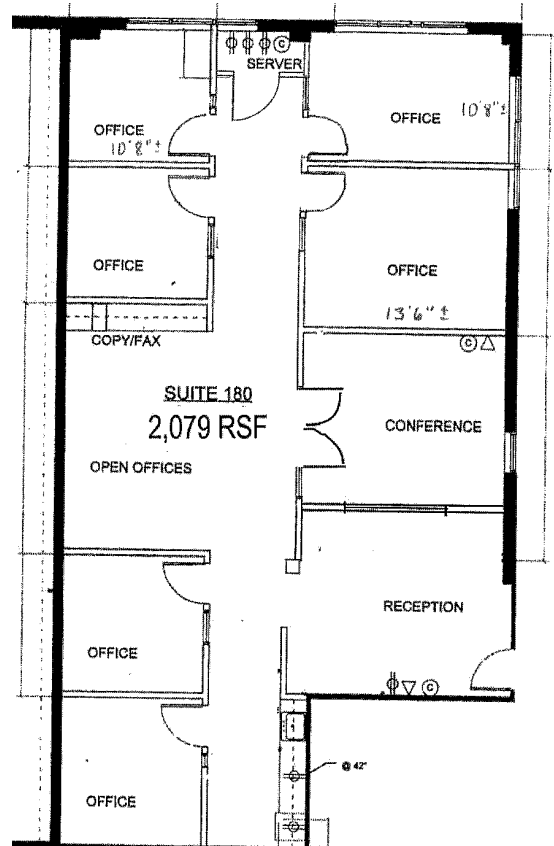
FOR LEASE

FLOOR PLANS

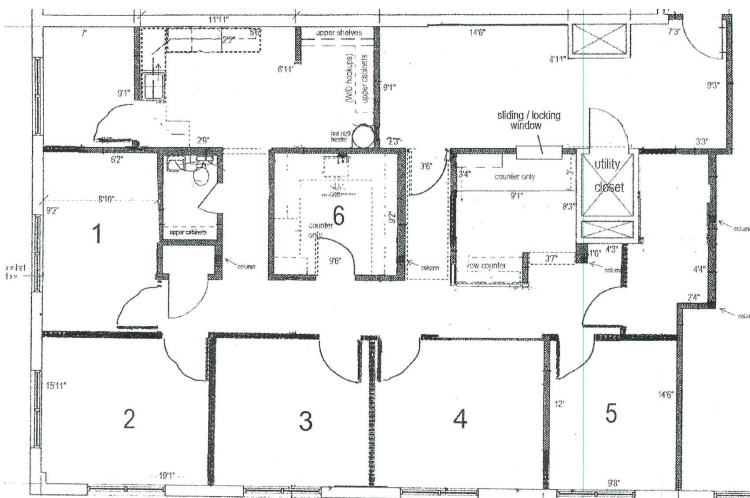
Suite 250: ± 4,279 SF



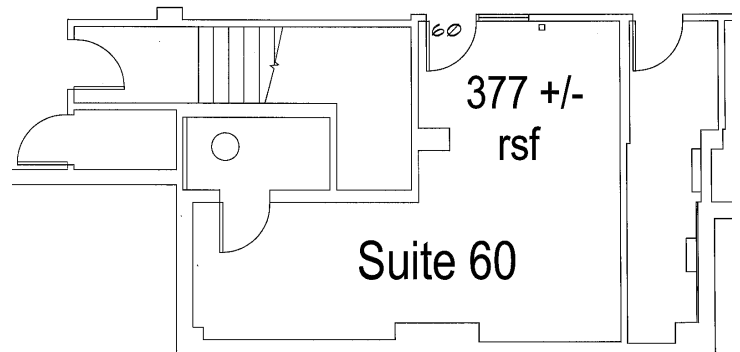
Suite 180: ± 2,079 SF



Suite 240: ± 1,920 SF



Suite 60: ± 377 SF



For more information or a property tour, please contact:

TIM PFEIFFER

503.225.8455

TimP@norris-stevens.com

Norris & Stevens

INVESTMENT REAL ESTATE SERVICES

TCN
WORLDWIDE
REAL ESTATE SERVICES

AMO

Information contained herein has been obtained from others and considered to be reliable; however, a prospective purchaser or lessee is expected to verify all information to their own satisfaction.

900 SW 5th Avenue • 17th Floor • Portland, OR 97204
503.223.3171 • norris-stevens.com