

KOZ ON INTERSTATE

5460 N Interstate Ave | Portland, OR 97217

FOR LEASE



GROUND FLOOR RETAIL SPACE FOR LEASE

DETAILS

- Suite 115: $\pm 1,587$ RSF
Corner retail - cold shell
- Suite 114: $\pm 2,292$ RSF
Faces N Killingsworth
- Suite 113: ± 306 RSF
- Suite 112: $\pm 1,072$ RSF
- Lease Rate: Call for rates

FEATURES

- Ground floor retail with 156 apartments above
- $\pm 18'$ ceilings
- On Max line and frequent TriMet bus access
- Great visibility with 2.8K ADT on N Interstate Ave
- Tenant improvement packages available for 5+ year lease



DEMOGRAPHICS	1 Mile	3 Miles	5 Miles
2024 Population	24,470	161,549	331,232
2024 Households	11,459	78,037	160,423
Avg. HH Income	\$120,852	\$113,345	\$112,513
Median HH Income	\$98,175	\$86,443	\$84,987
Daytime Employees	9,383	158,095	403,178

09.16.2025

For more information or a property tour, please contact:

DUANE LINK

503.225.8465

Duanel@norris-stevens.com



Information contained herein has been obtained from others and considered to be reliable; however, a prospective purchaser or lessee is expected to verify all information to their own satisfaction.

Norris & Stevens

INVESTMENT REAL ESTATE SERVICES

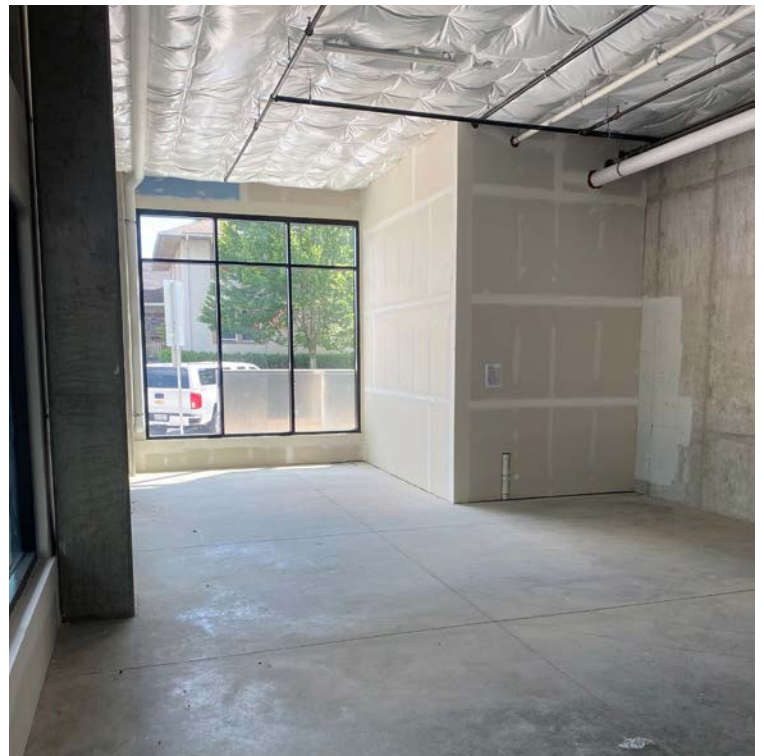
900 SW 5th Avenue • 17th Floor • Portland, OR 97204
503.223.3171 • norris-stevens.com

KOZ ON INTERSTATE

5460 N Interstate Ave | Portland, OR 97217

FOR LEASE

PROPERTY PHOTOS



For more information or a property tour, please contact:

DUANE LINK

503.225.8465

Duanel@norris-stevens.com



Information contained herein has been obtained from others and considered to be reliable; however, a prospective purchaser or lessee is expected to verify all information to their own satisfaction.

Norris & Stevens

INVESTMENT REAL ESTATE SERVICES

900 SW 5th Avenue • 17th Floor • Portland, OR 97204
503.223.3171 • norris-stevens.com

KOZ ON INTERSTATE

5460 N Interstate Ave | Portland, OR 97217

FOR LEASE

LOCATION MAP



For more information or a property tour, please contact:

DUANE LINK

503.225.8465

Duanel@norris-stevens.com



Information contained herein has been obtained from others and considered to be reliable; however, a prospective purchaser or lessee is expected to verify all information to their own satisfaction.

Norris & Stevens

INVESTMENT REAL ESTATE SERVICES

900 SW 5th Avenue • 17th Floor • Portland, OR 97204
503.223.3171 • norris-stevens.com