

# HEINTZ INDUSTRIAL PARK

2108 NE Argyle Street | Portland, OR 97211

FOR LEASE



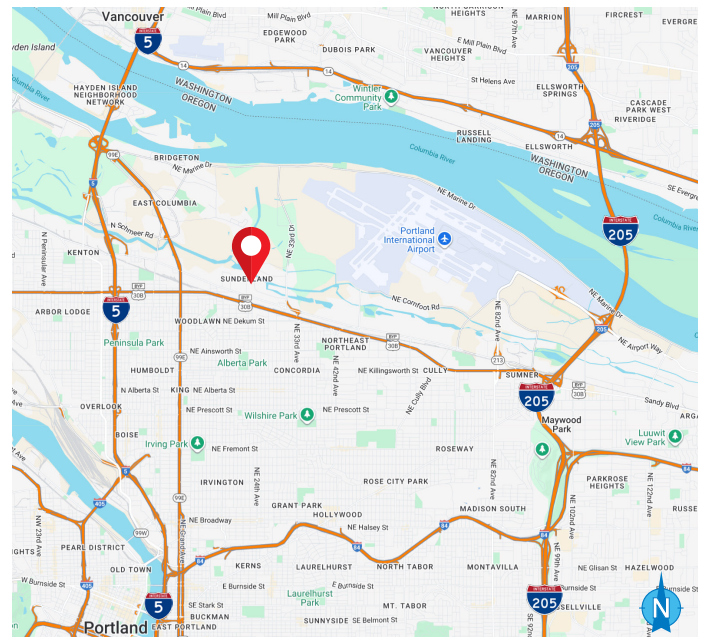
## INDUSTRIAL SPACE FOR LEASE

### DETAILS

- Bldg size: ± 10,800 SF - shell  
± 672 SF - office
- Rate: \$0.75 PSF, NNN - shell  
\$1.00 PSF surcharge - office

### FEATURES

- 22' clear height
- Fully sprinklered
- Heavy three phase power
- 2 dock doors, 1 grade door
- Column spacing 24' x 50'
- Great Columbia Corridor location offering easy access to I-5, I-205, and Portland International Airport



09.10.2025

For more information or a property tour, please contact:

**GREG NESTING**

503.225.8440

GregN@norris-stevens.com



Information contained herein has been obtained from others and considered to be reliable; however, a prospective purchaser or lessee is expected to verify all information to their own satisfaction.

## Norris & Stevens

INVESTMENT REAL ESTATE SERVICES

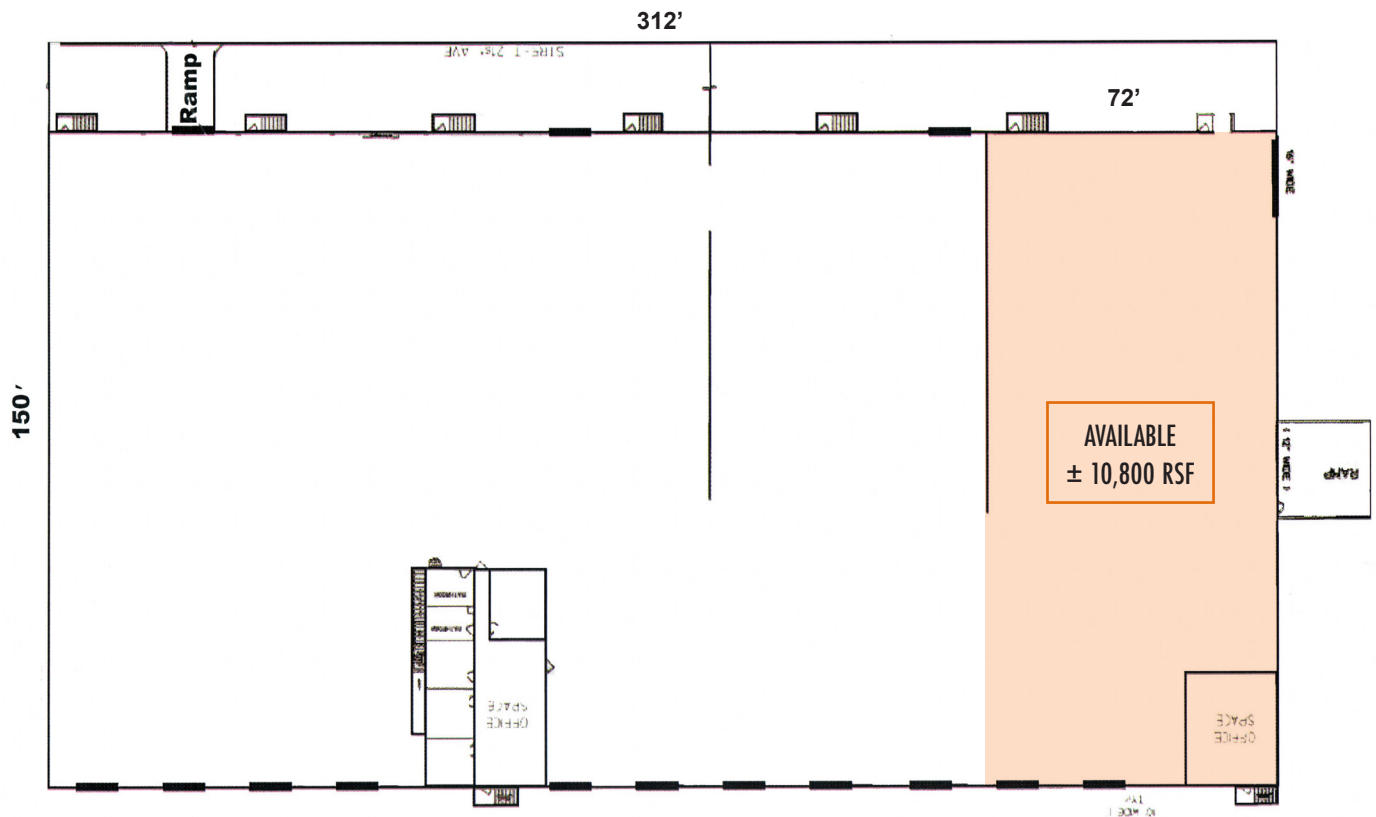
900 SW 5th Avenue • 17th Floor • Portland, OR 97204  
503.223.3171 • norris-stevens.com

# HEINTZ INDUSTRIAL PARK

2108 NE Argyle Street | Portland, OR 97211

FOR LEASE

## FLOOR PLAN



For more information or a property tour, please contact:

**GREG NESTING**

503.225.8440

GregN@norris-stevens.com



Information contained herein has been obtained from others and considered to be reliable; however, a prospective purchaser or lessee is expected to verify all information to their own satisfaction.

## Norris & Stevens

INVESTMENT REAL ESTATE SERVICES

900 SW 5th Avenue • 17th Floor • Portland, OR 97204  
503.223.3171 • norris-stevens.com