

1717 SW MADISON ST

Portland, OR 97201

FOR LEASE



RETAIL BUILDING FOR LEASE

PROPERTY OVERVIEW

RBA: ±3,255 SF
Year Built: 1962
Zoning: CX
Parking: ±11 on-site surface stalls (≈3.38/1,000 SF)
Walk Score: 90
Access: Multiple exterior entries / walk-up

HIGHLIGHTS

- On-site parking in a close-in SW location
- Flexible floor plan—easy to configure for office, clinic, community services, or creative uses
- Updated lighting & flooring in portions of the space
- Street-front visibility with signage/branding opportunity
- Quick regional access to I-405/US-26; steps to MAX/bus
- Simple single-story circulation for staff and visitors



For more information or a property tour, please contact:

MATT LYMAN

503.225.8454 (o) | 503.507.4880 (c)

MattL@norris-stevens.com

LUIS MARTIN DEL CAMPO

503.416.8422

LuisM@norris-stevens.com

Norris & Stevens

INVESTMENT REAL ESTATE SERVICES



Information contained herein has been obtained from others and considered to be reliable; however, a prospective purchaser or lessee is expected to verify all information to their own satisfaction.

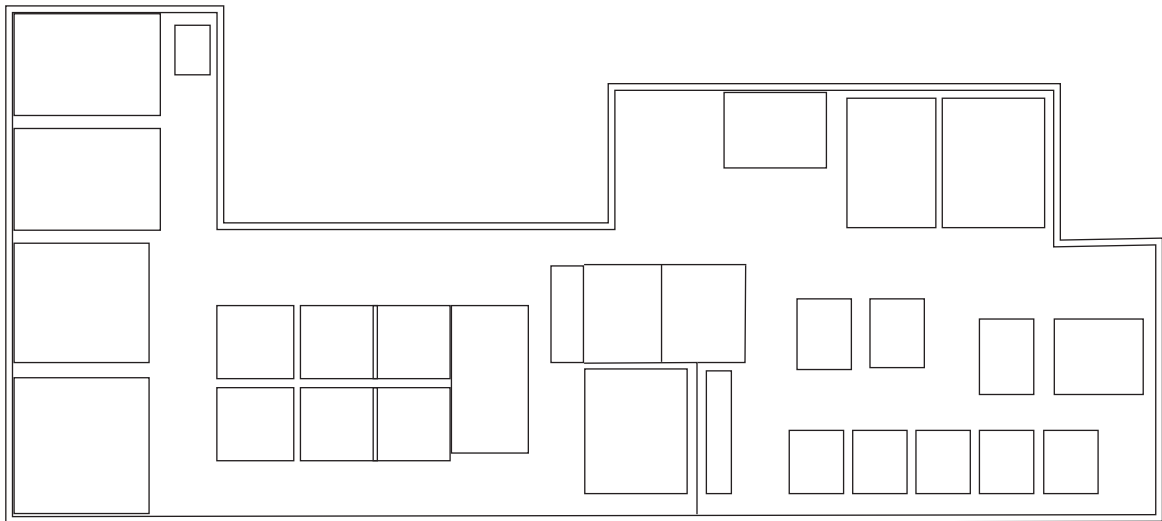
900 SW 5th Avenue • 17th Floor • Portland, OR 97204
503.223.3171 • norris-stevens.com

1717 SW MADISON ST

Portland, OR 97201

FOR LEASE

PROPERTY PHOTOS



For more information or a property tour, please contact:

MATT LYMAN

503.225.8454 (o) | 503.507.4880 (c)

MattL@norris-stevens.com

LUIS MARTIN DEL CAMPO

503.416.8422

LuisM@norris-stevens.com

Norris & Stevens

INVESTMENT REAL ESTATE SERVICES



Information contained herein has been obtained from others and considered to be reliable; however, a prospective purchaser or lessee is expected to verify all information to their own satisfaction.

900 SW 5th Avenue • 17th Floor • Portland, OR 97204
503.223.3171 • norris-stevens.com