

1310 SW 17TH AVE

Portland, OR 97201

FOR LEASE



RETAIL BUILDING FOR LEASE

PROPERTY OVERVIEW

RBA: ± 2,060 SF
Year Built: 1967
Zoning: CX
Parking: ± 4 on-site surface stalls (≈1.96/1,000 SF)
Walk Score: 90
Access: Ground-floor, walk-up entry

HIGHLIGHTS

- Close-in SW location with on-site parking—rare at this size
- Efficient single-story plan
- Street-front visibility with signage/branding opportunity
- Transit-rich: near MAX/bus; quick access to I-405/US-26 & Providence Park



For more information or a property tour, please contact:

MATT LYMAN

503.225.8454 (o) | 503.507.4880 (c)

MattL@norris-stevens.com

LUIS MARTIN DEL CAMPO

503.416.8422

LuisM@norris-stevens.com



Information contained herein has been obtained from others and considered to be reliable; however, a prospective purchaser or lessee is expected to verify all information to their own satisfaction.

Norris & Stevens

INVESTMENT REAL ESTATE SERVICES

900 SW 5th Avenue • 17th Floor • Portland, OR 97204
503.223.3171 • norris-stevens.com

1310 SW 17TH AVE

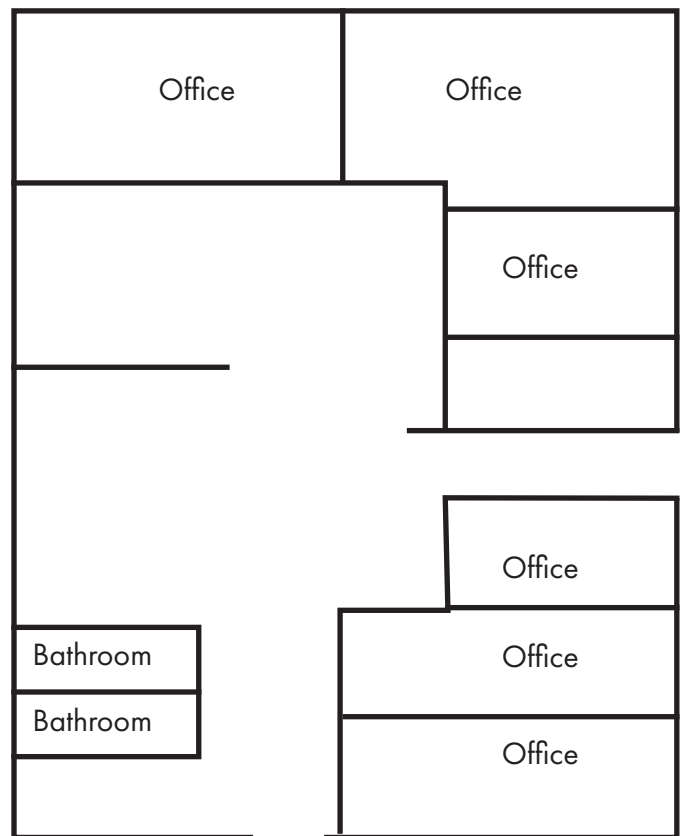
Portland, OR 97201

FOR LEASE

PROPERTY PHOTOS



FLOOR PLAN



For more information or a property tour, please contact:

MATT LYMAN

503.225.8454 (o) | 503.507.4880 (c)

MattL@norris-stevens.com

LUIS MARTIN DEL CAMPO

503.416.8422

LuisM@norris-stevens.com

Norris & Stevens

INVESTMENT REAL ESTATE SERVICES



Information contained herein has been obtained from others and considered to be reliable; however, a prospective purchaser or lessee is expected to verify all information to their own satisfaction.

900 SW 5th Avenue • 17th Floor • Portland, OR 97204
503.223.3171 • norris-stevens.com