

BING KONG BUILDING

18-22 NW 4th Ave | Portland, OR 97209

FOR LEASE



GROUND FLOOR RESTAURANT SPACE FOR LEASE

DETAILS

- Available spaces: \pm 1,460 SF
 \pm 2,500 SF
- Lease rate/NNN: Call for details
- Zoning: CX – Central Commercial

FEATURES

- 2nd gen restaurant space (built out kitchen with hood and RR)
- Move in ready, suites have been completely renovated
- In heart of old Chinatown, across the street from The Hoxton
- Surrounding tenants include: Deadstock Coffee, Ground Kontrol Arcade, Portland Chinatown Museum, Dixie Tavern, Chevron Gas, and Dantes



03.18.2025

For more information or a property tour, please contact:

LUIS MARTIN DEL CAMPO

503.416.8422

LuisM@norris-stevens.com



Information contained herein has been obtained from others and considered to be reliable; however, a prospective purchaser or lessee is expected to verify all information to his/her own satisfaction.

Norris & Stevens

INVESTMENT REAL ESTATE SERVICES

900 SW 5th Avenue • 17th Floor • Portland, OR 97204

503.223.3171 • norris-stevens.com

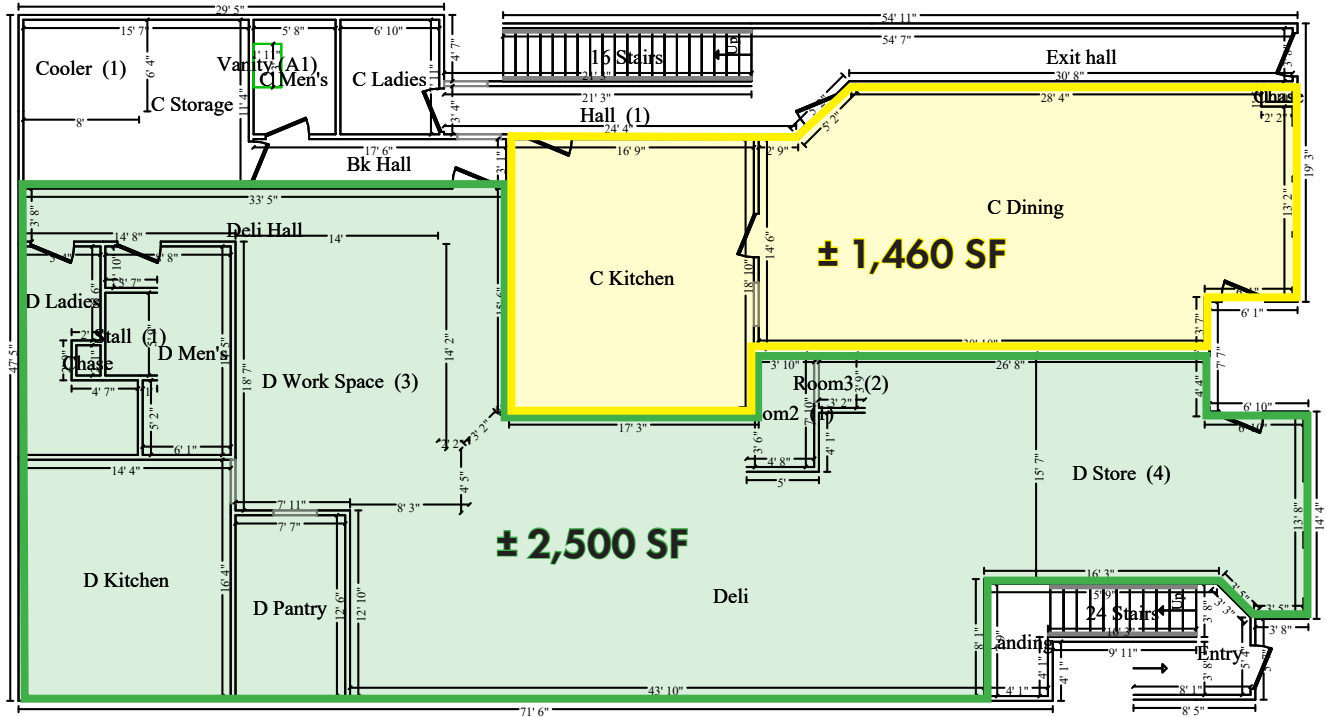
BING KONG BUILDING

18-22 NW 4th Ave | Portland, OR 97209

FOR LEASE

FLOOR PLAN

MAIN LEVEL



For more information or a property tour, please contact:

LUIS MARTIN DEL CAMPO

503.416.8422

LuisM@norris-stevens.com



Information contained herein has been obtained from others and considered to be reliable; however, a prospective purchaser or lessee is expected to verify all information to his/her own satisfaction.

Norris & Stevens

INVESTMENT REAL ESTATE SERVICES

900 SW 5th Avenue • 17th Floor • Portland, OR 97204

503.223.3171 • norris-stevens.com