

CHARBONNEAU VILLAGE CENTER

31960 SW Charbonneau Dr | Wilsonville, OR 97070

FOR LEASE



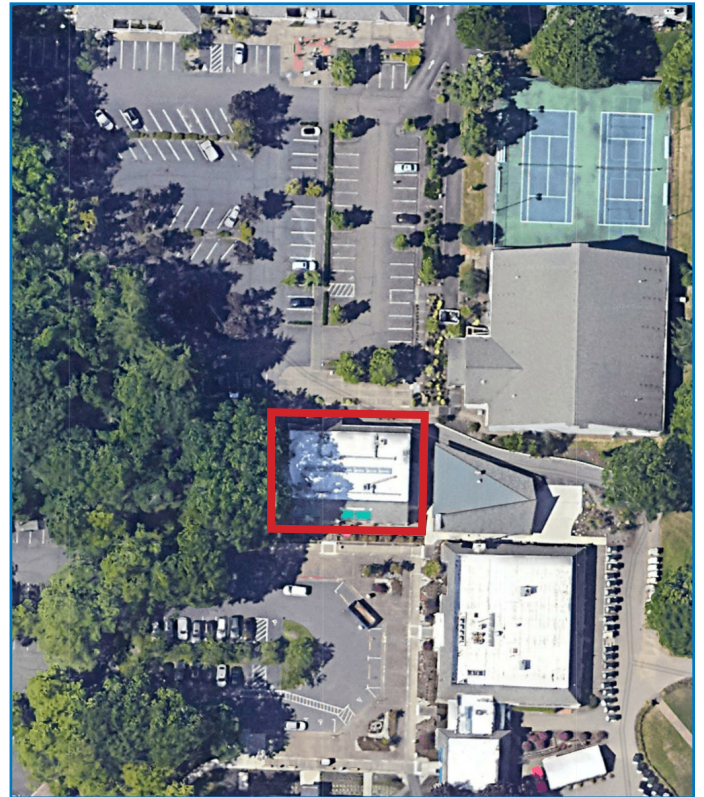
OFFICE SPACE FOR LEASE

DETAILS

- Space size: ± 971 SF
- Lease rate: Call brokers for rate
- Zoning: PDC

FEATURES

- Well-maintained office in Wilsonville's premier area
- Open layout with one private office
- Abundant natural light
- Ample parking
- Shared restroom



11.27.2024

For more information or a property tour, please contact:

GREG NESTING

503.225.8440

GregN@norris-stevens.com

LUIS MARTIN DEL CAMPO

503.416.8422

LuisM@norris-stevens.com

Norris & Stevens

INVESTMENT REAL ESTATE SERVICES



Information contained herein has been obtained from others and considered to be reliable; however, a prospective purchaser or lessee is expected to verify all information to their own satisfaction.

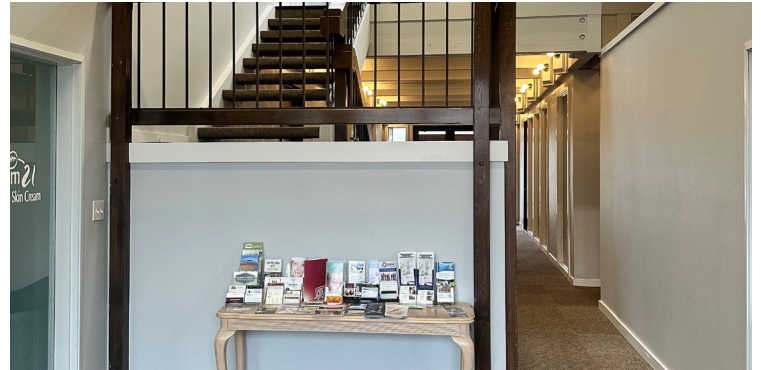
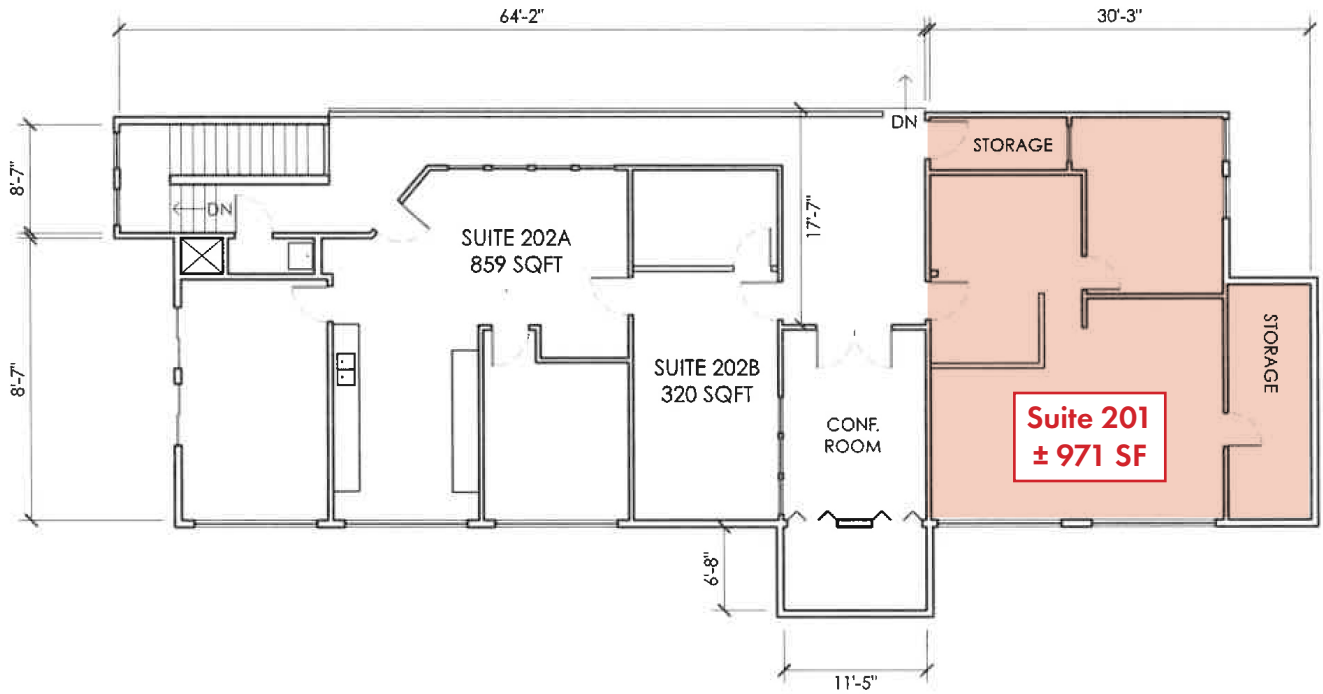
900 SW 5th Avenue • 17th Floor • Portland, OR 97204
503.223.3171 • norris-stevens.com

CHARBONNEAU VILLAGE CENTER

31960 SW Charbonneau Dr | Wilsonville, OR 97070

FOR LEASE

FLOOR PLAN



For more information or a property tour, please contact:

GREG NESTING

503.225.8440

GregN@norris-stevens.com

LUIS MARTIN DEL CAMPO

503.416.8422

LuisM@norris-stevens.com

Norris & Stevens

INVESTMENT REAL ESTATE SERVICES



Information contained herein has been obtained from others and considered to be reliable; however, a prospective purchaser or lessee is expected to verify all information to their own satisfaction.

900 SW 5th Avenue • 17th Floor • Portland, OR 97204
503.223.3171 • norris-stevens.com

CHARBONNEAU VILLAGE CENTER

31960 SW Charbonneau Dr | Wilsonville, OR 97070

FOR LEASE

PROPERTY PHOTOS & MAP



For more information or a property tour, please contact:

GREG NESTING

503.225.8440

GregN@norris-stevens.com

LUIS MARTIN DEL CAMPO

503.416.8422

LuisM@norris-stevens.com

Norris & Stevens

INVESTMENT REAL ESTATE SERVICES



Information contained herein has been obtained from others and considered to be reliable; however, a prospective purchaser or lessee is expected to verify all information to their own satisfaction.

900 SW 5th Avenue • 17th Floor • Portland, OR 97204

503.223.3171 • norris-stevens.com