

# HIGH TRAFFIC RETAIL SPACE

7320 NE Sandy Blvd | Portland, OR 97213

## FOR LEASE



## RETAIL/OFFICE SPACE FOR LEASE

### DETAILS

- Space available: ± 3,900 SF
- Land size: ± 0.63 AC
- Lease rate: Call for rate/details/NNN
- Zoning: CM2

### FEATURES

- Open floor plan with 2 storefront entrances
- High visibility with ± 8,100 VPD on NE Sandy Blvd
- Full basement storage space
- Shared parking in adjacent lot from NE 74th / NE Fremont St
- Easy access to I-205 and I-84

DEMOGRAPHICS	1 MILE	3 MILES
Population	19,330	143,085
Households	8,355	61,494
Median Age	39.8	40.0
Median Household Income	\$90,458	\$102,292
Daytime Employees	6,568	77,887



10.30.2024

For more information or a property tour, please contact:

**GREG NESTING**

503.225.8440

GregN@norris-stevens.com

**LUIS MARTIN DEL CAMPO**

503.416.8422

LuisM@norris-stevens.com

## Norris & Stevens

INVESTMENT REAL ESTATE SERVICES



Information contained herein has been obtained from others and considered to be reliable; however, a prospective purchaser or lessee is expected to verify all information to their own satisfaction.

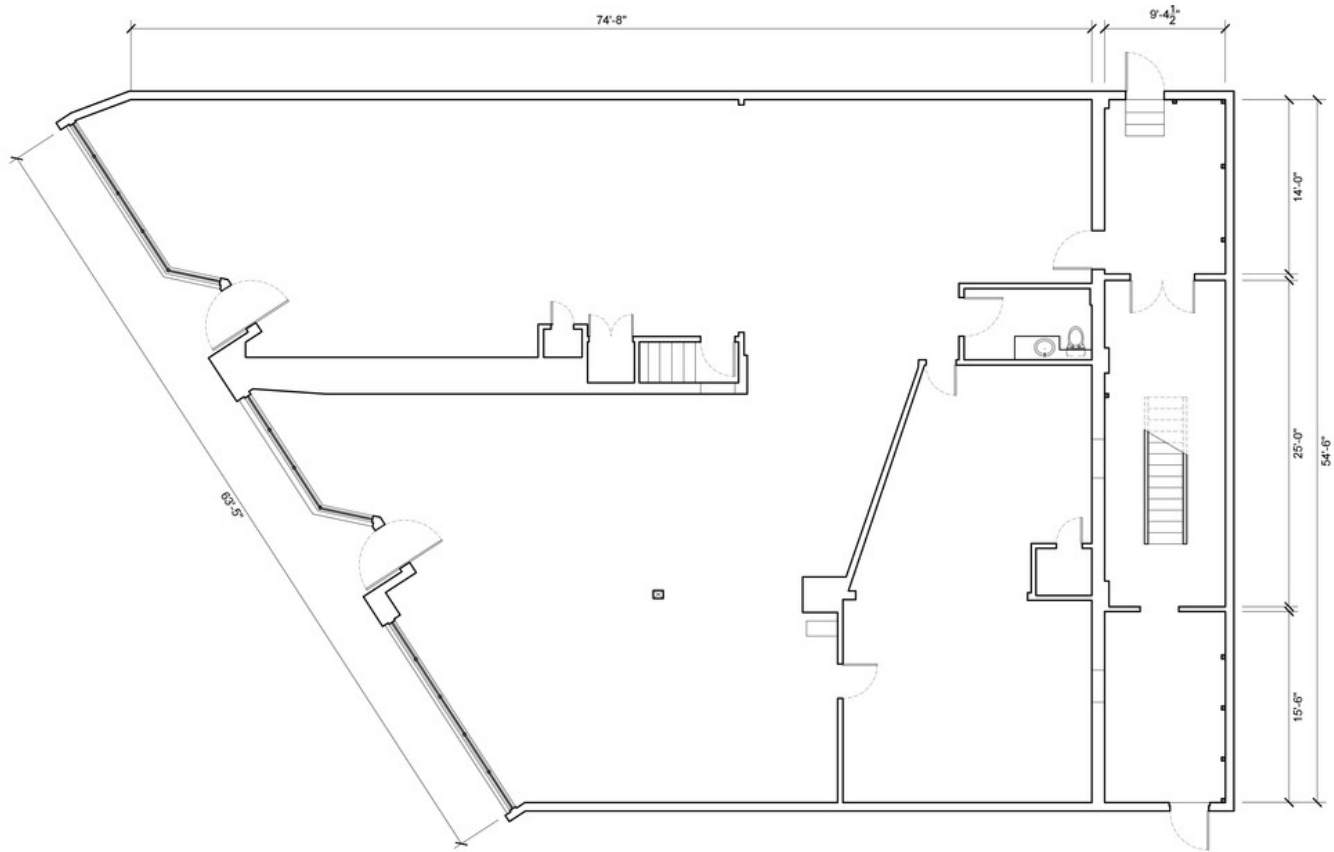
900 SW 5th Avenue • 17th Floor • Portland, OR 97204  
503.223.3171 • norris-stevens.com

# HIGH TRAFFIC RETAIL SPACE

7320 NE Sandy Blvd | Portland, OR 97213

# FOR LEASE

## FLOOR PLAN



For more information or a property tour, please contact:

**GREG NESTING**

503.225.8440

GregN@norris-stevens.com

**LUIS MARTIN DEL CAMPO**

503.416.8422

LuisM@norris-stevens.com

## Norris & Stevens

INVESTMENT REAL ESTATE SERVICES



Information contained herein has been obtained from others and considered to be reliable; however, a prospective purchaser or lessee is expected to verify all information to their own satisfaction.

900 SW 5th Avenue • 17th Floor • Portland, OR 97204

503.223.3171 • [norris-stevens.com](http://norris-stevens.com)

# HIGH TRAFFIC RETAIL SPACE

7320 NE Sandy Blvd | Portland, OR 97213

# FOR LEASE

## MAP



WALK SCORE  
**87**

BIKE SCORE  
**92**

For more information or a property tour, please contact:

**GREG NESTING**  
503.225.8440  
GregN@norris-stevens.com

**LUIS MARTIN DEL CAMPO**  
503.416.8422  
LuisM@norris-stevens.com

## Norris & Stevens

INVESTMENT REAL ESTATE SERVICES



Information contained herein has been obtained from others and considered to be reliable; however, a prospective purchaser or lessee is expected to verify all information to their own satisfaction.

900 SW 5th Avenue • 17th Floor • Portland, OR 97204  
503.223.3171 • [norris-stevens.com](http://norris-stevens.com)