

4062 NW SALTZMAN RD

Portland, OR 97229

FOR LEASE



RETAIL SPACE FOR LEASE

DETAILS

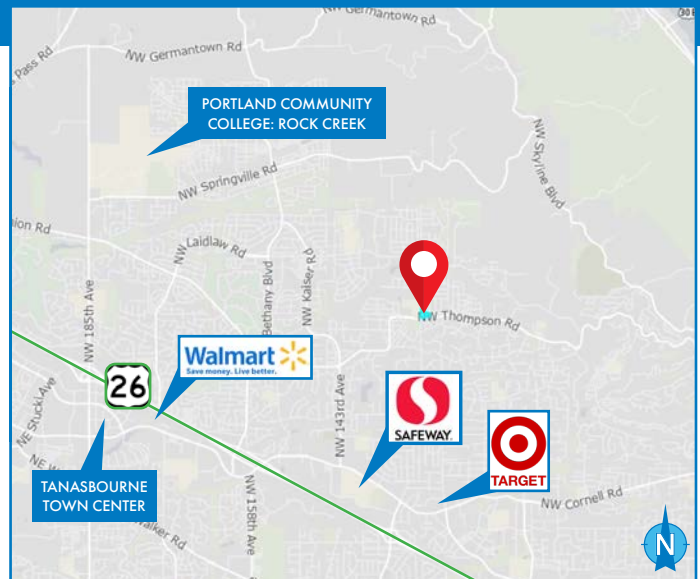
- Suite 206: ± 1,100 SF
- Lease rate: Call for rate

FEATURES

- Waiting/reception area
- Subdivided into 2 office/exam/classrooms
- 2 separate restrooms
- Ample parking

AREA FEATURES

- 4,200 VPD on NW Saltzman Rd & 2,300 VPD on NW Thompson Rd
- 5 minutes from Highway 26
- Short drive to major retailers and grocery anchored centers



DEMOGRAPHICS

	1 MILE	3 MILES
Population	14,811	98,785
Households	4,665	38,423
Median Age	39.3	38.5
Median Household Income	\$235,260	\$148,019
Daytime Employees	1,699	23,245

04.16.2024

For more information or a property tour, please contact:

MALLORIE GOODY
503.416.8409
MallorieG@norris-stevens.com

ELISSA VANARSDALL
503.225.8439
ElissaV@norris-stevens.com

Norris & Stevens

INVESTMENT REAL ESTATE SERVICES



Information contained herein has been obtained from others and considered to be reliable; however, a prospective purchaser or lessee is expected to verify all information to his/her own satisfaction.

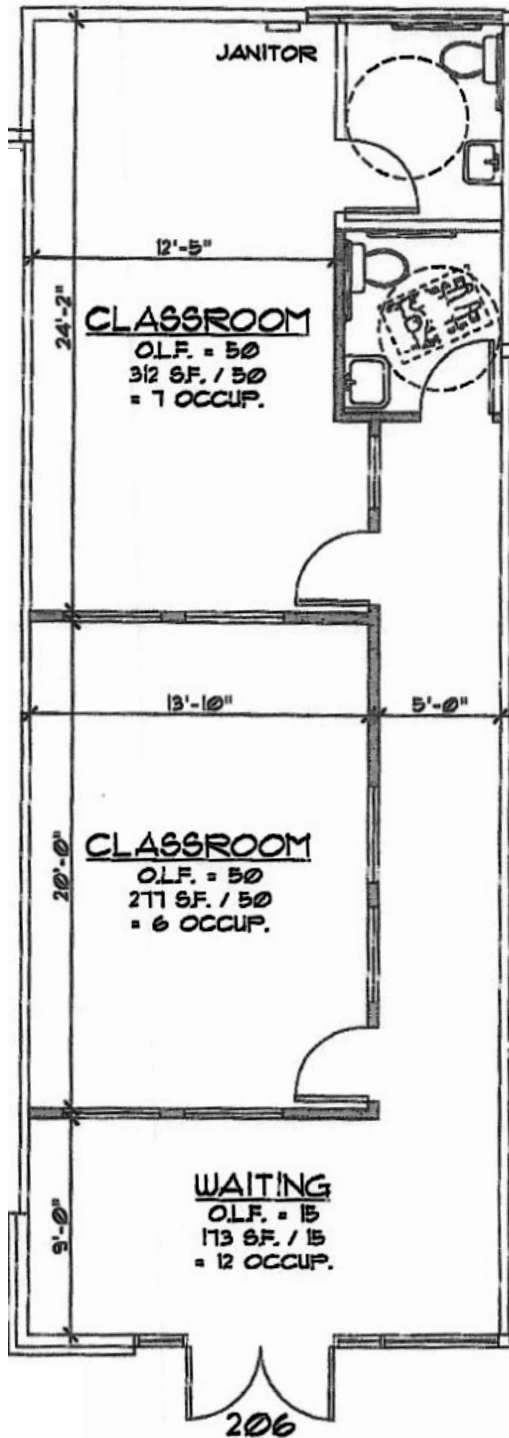
900 SW 5th Avenue • 17th Floor • Portland, OR 97204
503.223.3171 • norris-stevens.com

4062 NW SALTZMAN RD

Portland, OR 97229

FOR LEASE

FLOOR PLAN & PHOTOS



For more information or a property tour, please contact:

MALLORIE GOODY
503.416.8409
MallorieG@norris-stevens.com

ELISSA VANARSDALL
503.225.8439
ElissaV@norris-stevens.com

Norris & Stevens

INVESTMENT REAL ESTATE SERVICES



Information contained herein has been obtained from others and considered to be reliable; however, a prospective purchaser or lessee is expected to verify all information to his/her own satisfaction.

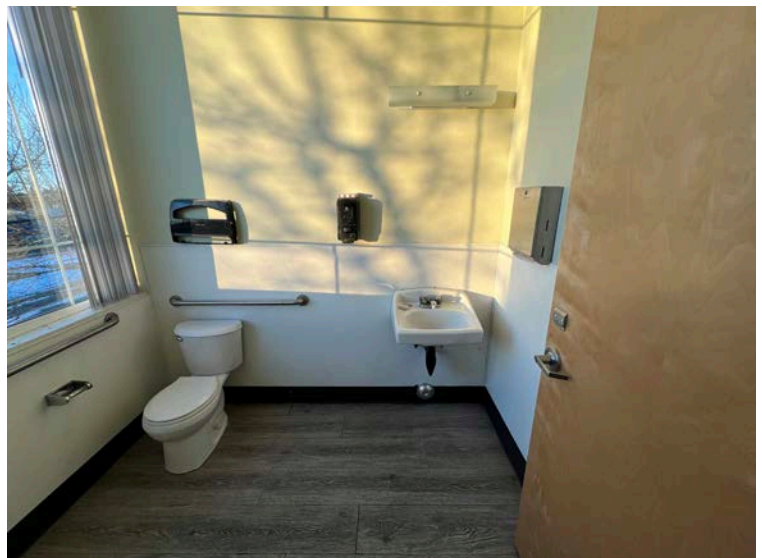
900 SW 5th Avenue • 17th Floor • Portland, OR 97204
503.223.3171 • norris-stevens.com

4062 NW SALTZMAN RD

Portland, OR 97229

FOR LEASE

INTERIOR PHOTOS



For more information or a property tour, please contact:

MALLORIE GOODY
503.416.8409
MallorieG@norris-stevens.com

ELISSA VANARSDALL
503.225.8439
ElissaV@norris-stevens.com

Norris & Stevens

INVESTMENT REAL ESTATE SERVICES



Information contained herein has been obtained from others and considered to be reliable; however, a prospective purchaser or lessee is expected to verify all information to his/her own satisfaction.

900 SW 5th Avenue • 17th Floor • Portland, OR 97204
503.223.3171 • norris-stevens.com