

CENTRAL EASTSIDE BUSINESS CENTER

2502-2530 SE 8th Ave | Portland, OR 97202

FOR LEASE

OUTSTANDING LOCATION CLOSE-IN



DOWNTOWN BUSINESS INCENTIVE!

Get your share of \$250,000!

Temporary nonrefundable tax credit designed to incentivize commercial lease signings and lease renewals.

*See below for details

CLOSE-IN INDUSTRIAL SPACE FOR LEASE

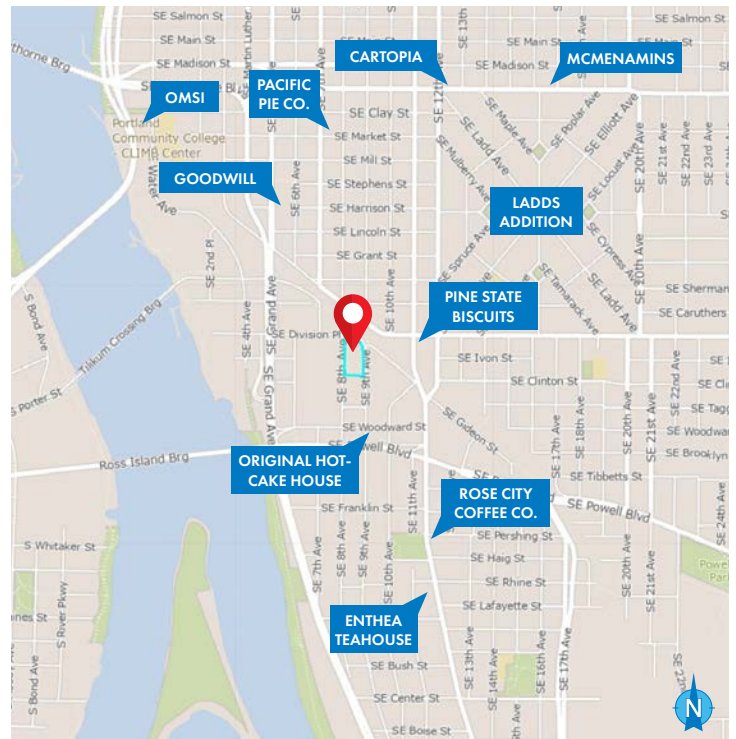
DETAILS

- Suite 2516: ± 7,704 SF
\$1.36 PSF/Mo., NNN

FEATURES

- Two (2) 10' grade doors
- Two (2) restrooms
- Excellent amenities with showroom
- Office space
- Abundant parking
- Hard to find storefront visibility opportunity

*Space is with The Downtown Business Incentive Credit Program (DBI). Qualifying Tenants can receive up to \$250,000 in a one time, nonrefundable tax credit. [Click Here](#) for more details.



03.26.2024

For more information or a property tour, please contact:

NICK CHESSAR
503.225.8469
NickC@norris-stevens.com

SCOTT FINNEY, SIOR
503.225.8431
ScottF@norris-stevens.com

Norris & Stevens

INVESTMENT REAL ESTATE SERVICES

900 SW 5th Avenue • 17th Floor • Portland, OR 97204
503.223.3171 • norris-stevens.com



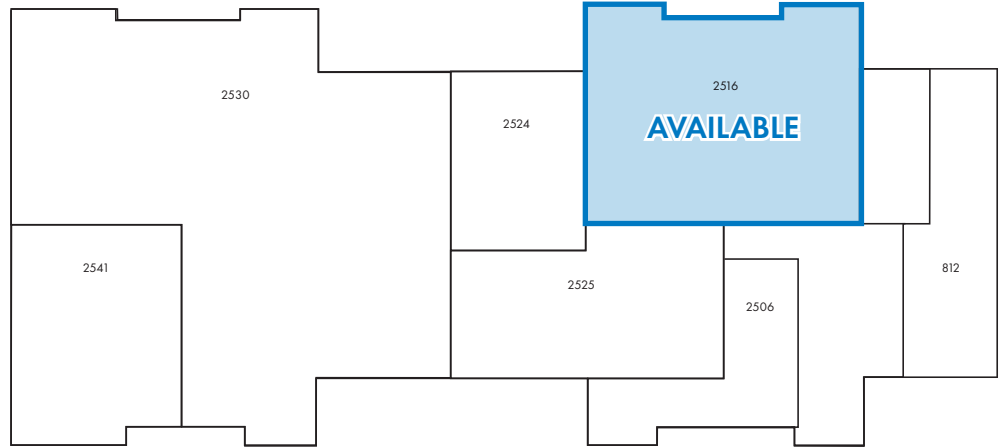
Information contained herein has been obtained from others and considered to be reliable; however, a prospective purchaser or lessee is expected to verify all information to his/her own satisfaction.

CENTRAL EASTSIDE BUSINESS CENTER

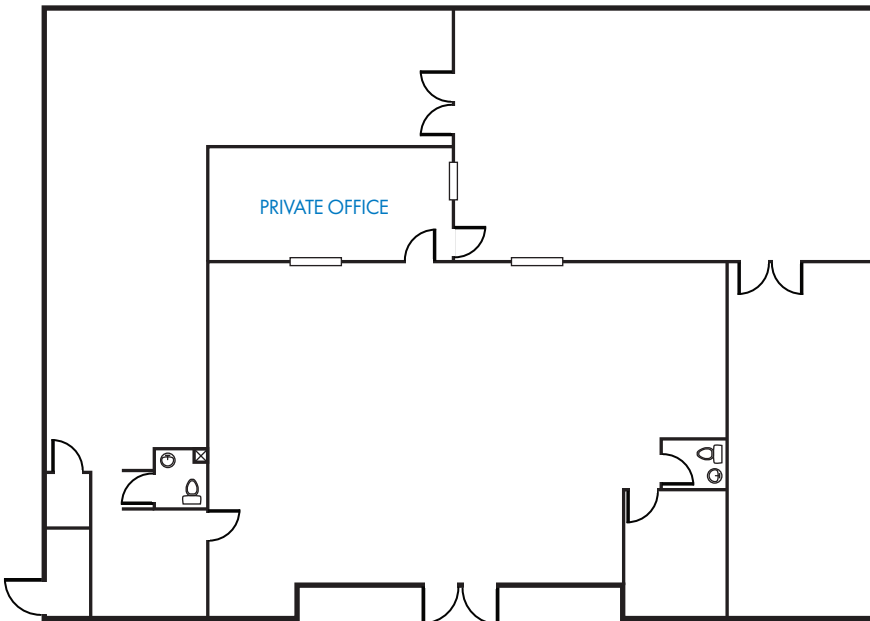
2502-2530 SE 8th Ave | Portland, OR 97202

FOR LEASE

FLOOR PLANS



SUITE 2516



For more information or a property tour, please contact:

NICK CHESSAR
503.225.8469
NickC@norris-stevens.com

SCOTT FINNEY, SIOR
503.225.8431
ScottF@norris-stevens.com

Norris & Stevens

INVESTMENT REAL ESTATE SERVICES



Information contained herein has been obtained from others and considered to be reliable; however, a prospective purchaser or lessee is expected to verify all information to his/her own satisfaction.

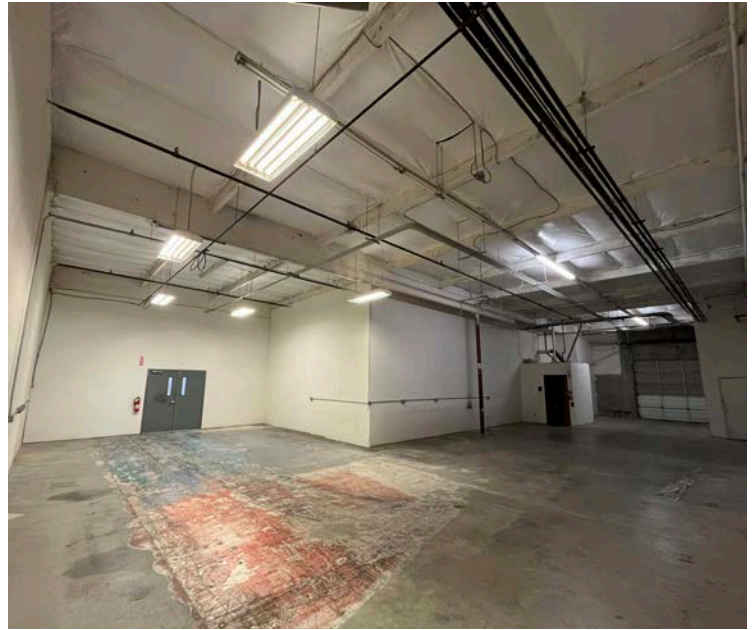
900 SW 5th Avenue • 17th Floor • Portland, OR 97204
503.223.3171 • norris-stevens.com

CENTRAL EASTSIDE BUSINESS CENTER

2502-2530 SE 8th Ave | Portland, OR 97202

FOR LEASE

PROPERTY PHOTOS



For more information or a property tour, please contact:

NICK CHESSAR
503.225.8469
NickC@norris-stevens.com

SCOTT FINNEY, SIOR
503.225.8431
ScottF@norris-stevens.com

Norris & Stevens

INVESTMENT REAL ESTATE SERVICES



Information contained herein has been obtained from others and considered to be reliable; however, a prospective purchaser or lessee is expected to verify all information to his/her own satisfaction.

900 SW 5th Avenue • 17th Floor • Portland, OR 97204
503.223.3171 • norris-stevens.com