

# CANBY INDUSTRIAL LAND

388 S Walnut St | Canby, OR 97013

FOR SALE



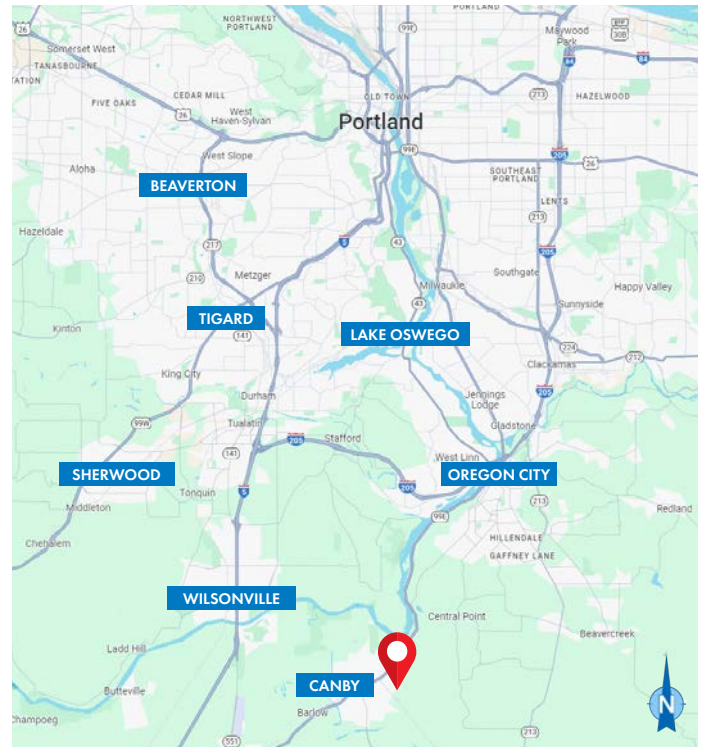
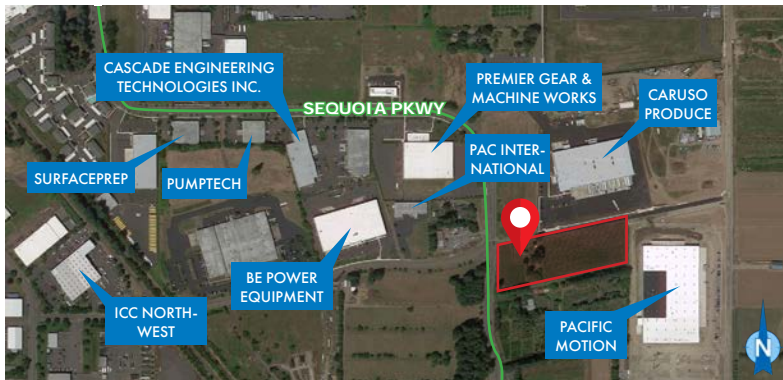
## LAND FOR SALE

### DETAILS

- Land area: ± 4.55 AC (198,198 SF)
- Price: \$2,235,000
- Zoning: Light Industrial (M-1)

### FEATURES

- Flat topography
- On corner of Sequoia Pkwy & Walnut St



[Click here](#) for more information on Canby, OR

03.01.2024

For more information or a property tour, please contact:

**GABE SCHNITZER**  
503.225.8443  
GabeS@norris-stevens.com

**GREG NESTING**  
503.225.8430  
GregN@norris-stevens.com

## Norris & Stevens

INVESTMENT REAL ESTATE SERVICES



Information contained herein has been obtained from others and considered to be reliable; however, a prospective purchaser or lessee is expected to verify all information to his/her own satisfaction.

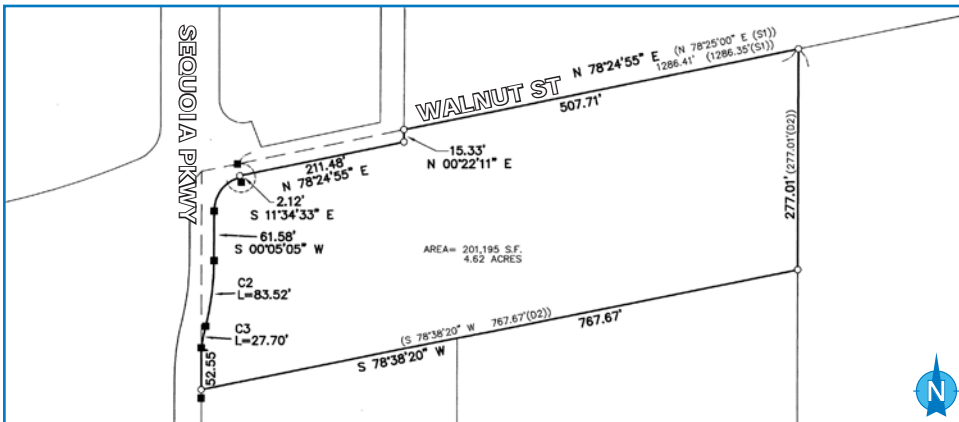
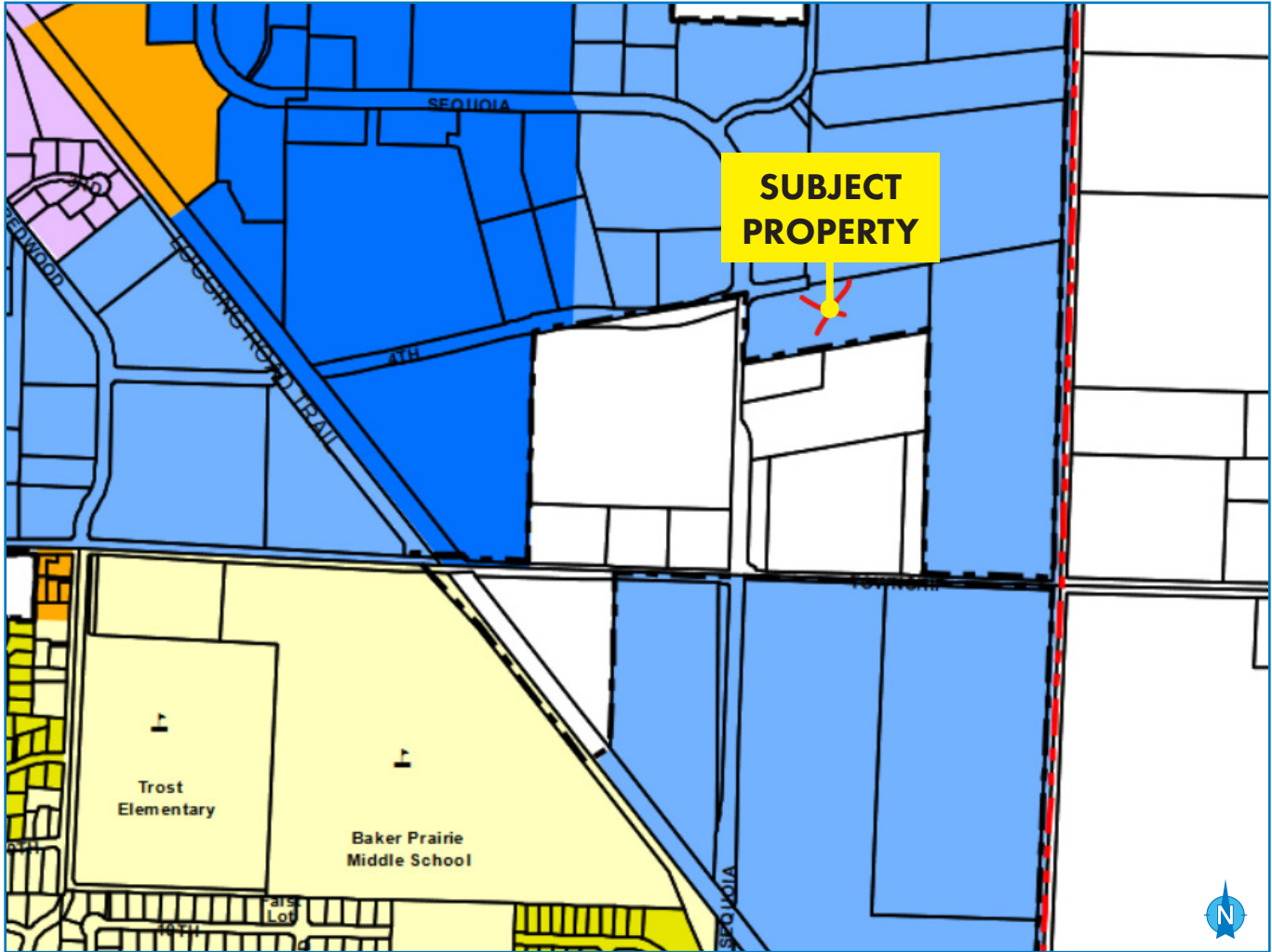
900 SW 5th Avenue • 17th Floor • Portland, OR 97204  
503.223.3171 • [norris-stevens.com](http://norris-stevens.com)

# CANBY INDUSTRIAL LAND

388 S Walnut St | Canby, OR 97013

FOR SALE

## ZONING & SITE SURVEY



For more information or a property tour, please contact:

**GABE SCHNITZER**  
503.225.8443  
GabeS@norris-stevens.com

**GREG NESTING**  
503.225.8430  
GregN@norris-stevens.com

# Norris & Stevens

INVESTMENT REAL ESTATE SERVICES



Information contained herein has been obtained from others and considered to be reliable; however, a prospective purchaser or lessee is expected to verify all information to his/her own satisfaction.

900 SW 5th Avenue • 17th Floor • Portland, OR 97204  
503.223.3171 • norris-stevens.com