

# STAND-ALONE OFFICE BUILDING

15969 SW Reese Road | Lake Oswego, OR 97035

## FOR LEASE



## OFFICE SPACE FOR LEASE

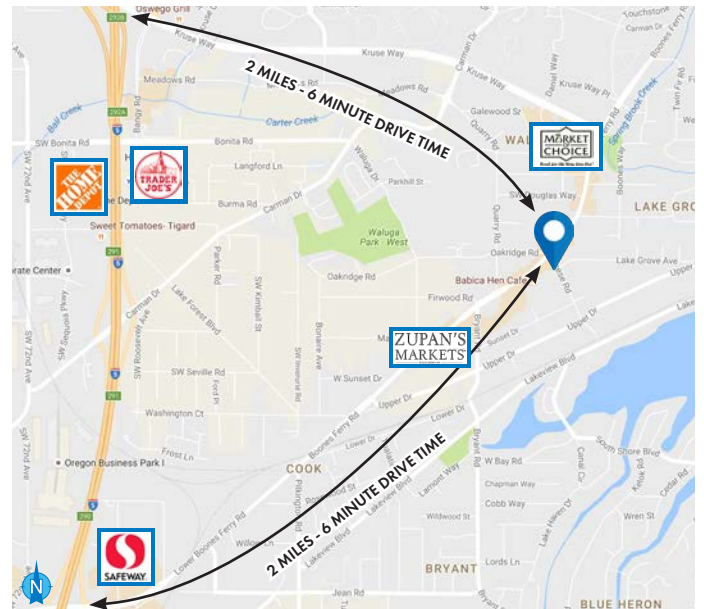
### DETAILS

- Lease rate: \$1,975/month, Modified Gross
- Suite A area: ± 1,000 SF  
Available January 1, 2026

### FEATURES

- Free standing office building
- High visibility and located at a signalized intersection
- Along Boones Ferry retail corridor
- Easy access to I-5 and Hwy 217
- Highly desirable area and zip code

\*Storage shed is as-is, contents will not be insured against damage or theft



03.27.2025

For more information or a property tour, please contact:

**CHARLIE DIGREGORIO**

503.225.8468

CharlieD@norris-stevens.com



Information contained herein has been obtained from others and considered to be reliable; however, a prospective purchaser or lessee is expected to verify all information to their own satisfaction.

## Norris & Stevens

INVESTMENT REAL ESTATE SERVICES

900 SW 5th Avenue • 17th Floor • Portland, OR 97204  
503.223.3171 • norris-stevens.com

# STAND-ALONE OFFICE BUILDING

15969 SW Reese Road | Lake Oswego, OR 97035

FOR LEASE

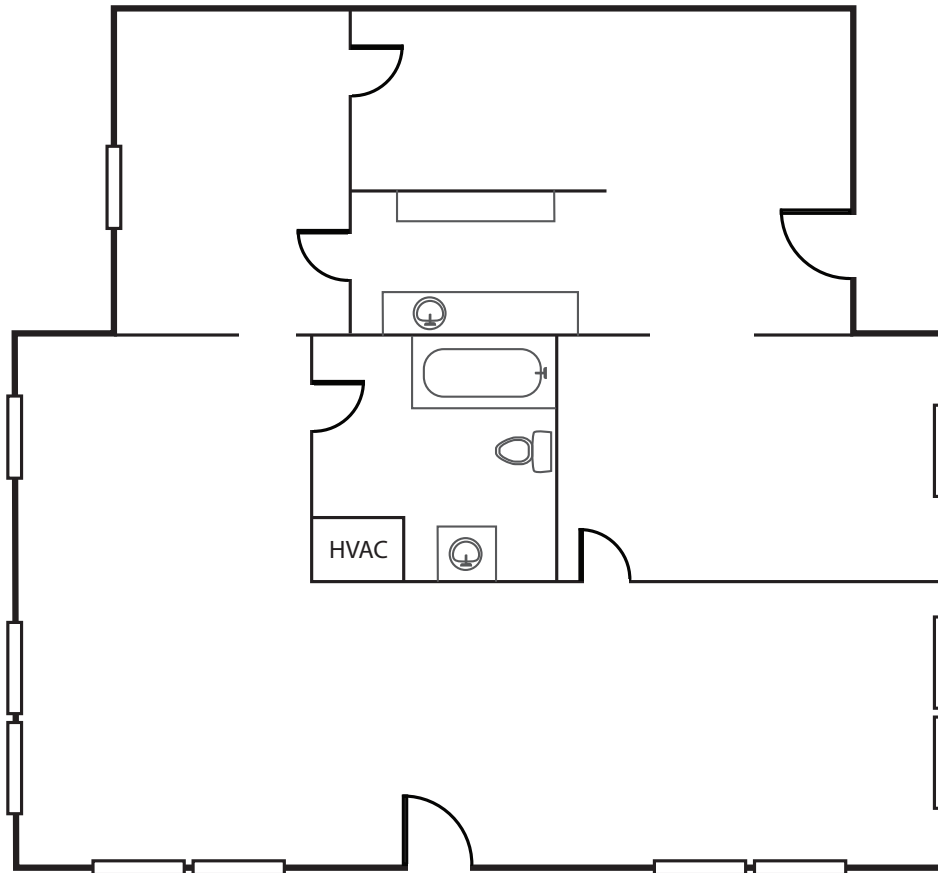
PHOTOS / FLOOR PLAN



## FLOOR PLAN

± 1,000 SF

\*Not to scale



For more information or a property tour, please contact:

**CHARLIE DIGREGORIO**

503.225.8468

CharlieD@norris-stevens.com



Information contained herein has been obtained from others and considered to be reliable; however, a prospective purchaser or lessee is expected to verify all information to their own satisfaction.

## Norris & Stevens

INVESTMENT REAL ESTATE SERVICES

900 SW 5th Avenue • 17th Floor • Portland, OR 97204  
503.223.3171 • norris-stevens.com