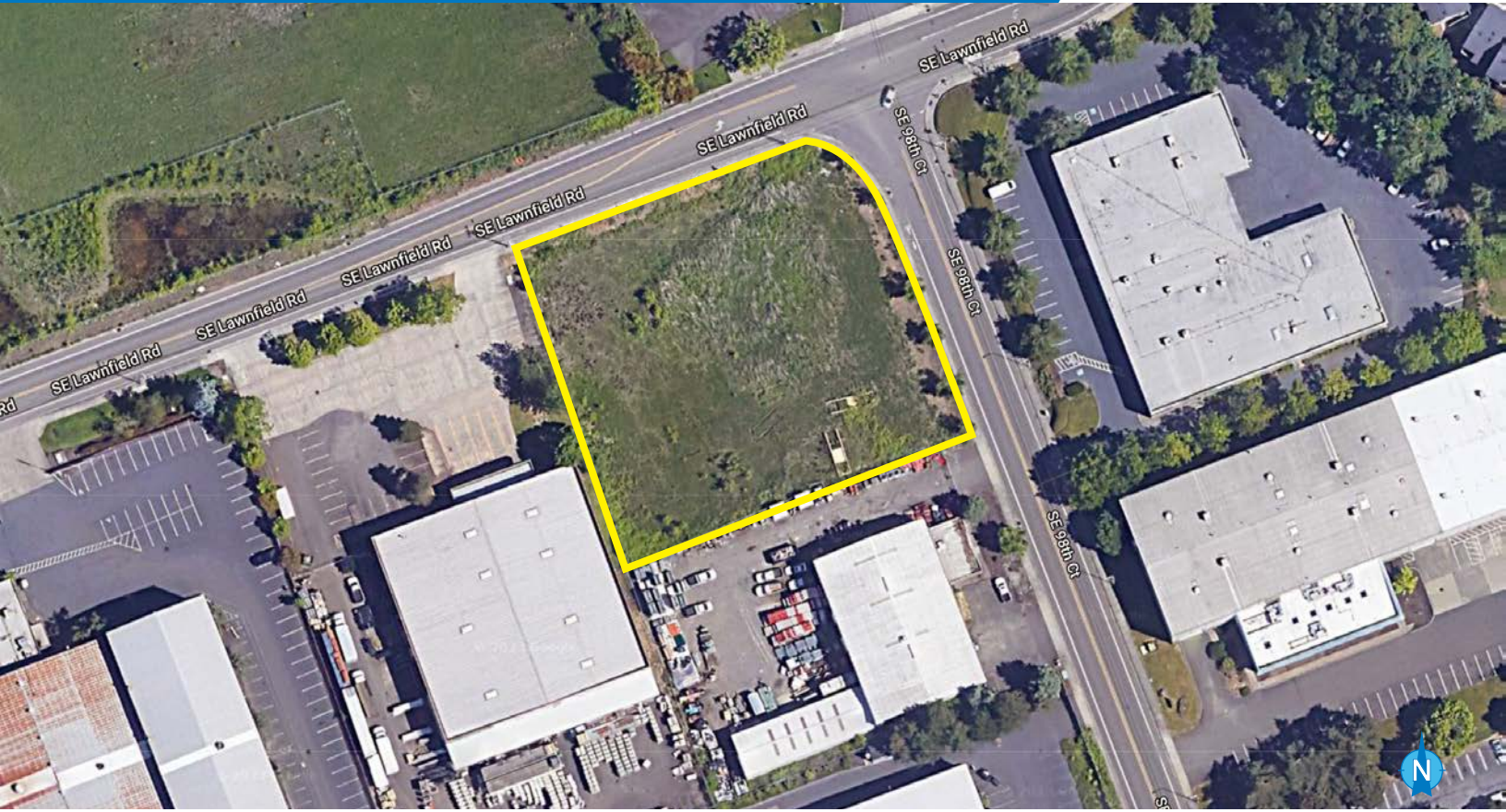


# CLACKAMAS LAND LEASE

14235 SE 98th Court | Clackamas, OR 97015

## FOR LEASE



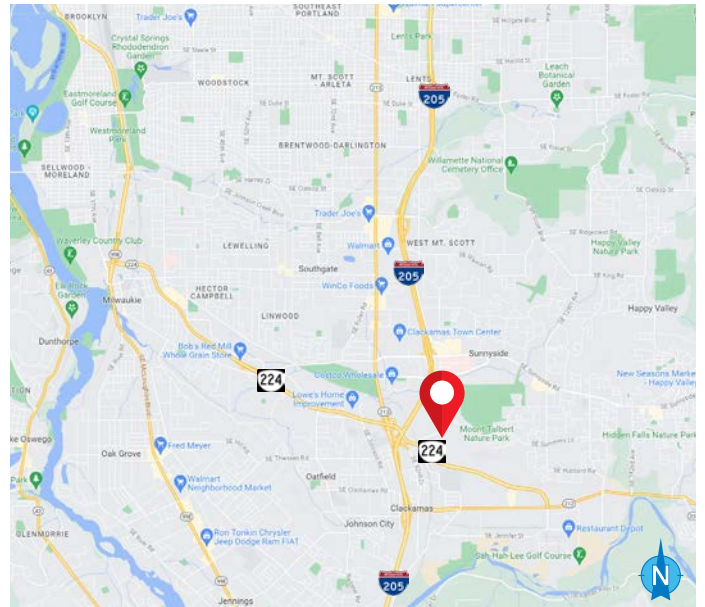
## INDUSTRIAL LAND FOR LEASE

### DETAILS

- Size: ± 1.2 acres (± 52,272 SF)
- Lease rate: \$0.20 PSF
- Zoning: LI

### FEATURES

- Conveniently located on the corner of SE Lawnfield Rd and SE 98th Court
- Great access to both Highway 224 and I-205
- Unincorporated Clackamas County



11.06.2023

For more information or a property tour, please contact:

**TIM BUDELMAN**

503.225.8472

TimB@norris-stevens.com



Information contained herein has been obtained from others and considered to be reliable; however, a prospective purchaser or lessee is expected to verify all information to their own satisfaction.

## Norris & Stevens

INVESTMENT REAL ESTATE SERVICES

900 SW 5th Avenue • 17th Floor • Portland, OR 97204  
503.223.3171 • norris-stevens.com

# CLACKAMAS LAND LEASE

14235 SE 98th Court | Clackamas, OR 97015

FOR LEASE

## PROPERTY PHOTOS



For more information or a property tour, please contact:

**TIM BUDELMAN**

503.225.8472

TimB@norris-stevens.com



Information contained herein has been obtained from others and considered to be reliable; however, a prospective purchaser or lessee is expected to verify all information to their own satisfaction.

## Norris & Stevens

INVESTMENT REAL ESTATE SERVICES

900 SW 5th Avenue • 17th Floor • Portland, OR 97204  
503.223.3171 • norris-stevens.com