

HUNTERS RIDGE - SUITE 150

20512 SW Roy Rogers Road | Sherwood, OR 97140

FOR SALE



GROUND FLOOR OFFICE CONDO INVESTMENT SALE

DETAILS

- Suite 150: ± 2,341 SF
- Sale Price: Call for pricing

FEATURES

- Ground floor commercial condo suite with residential suites above
- Suite contains seven private offices and three rest rooms
- Beautiful wooded setting
- Easy access to Pacific Highway (99W)
- Adjacent to Sherwood Crossroads Shopping Center
- Plenty of parking



09.26.2023

For more information or a property tour, please contact:

TIM BUDELMAN

503.225.8472

TimB@norris-stevens.com



Information contained herein has been obtained from others and considered to be reliable; however, a prospective purchaser or lessee is expected to verify all information to their own satisfaction.

Norris & Stevens

INVESTMENT REAL ESTATE SERVICES

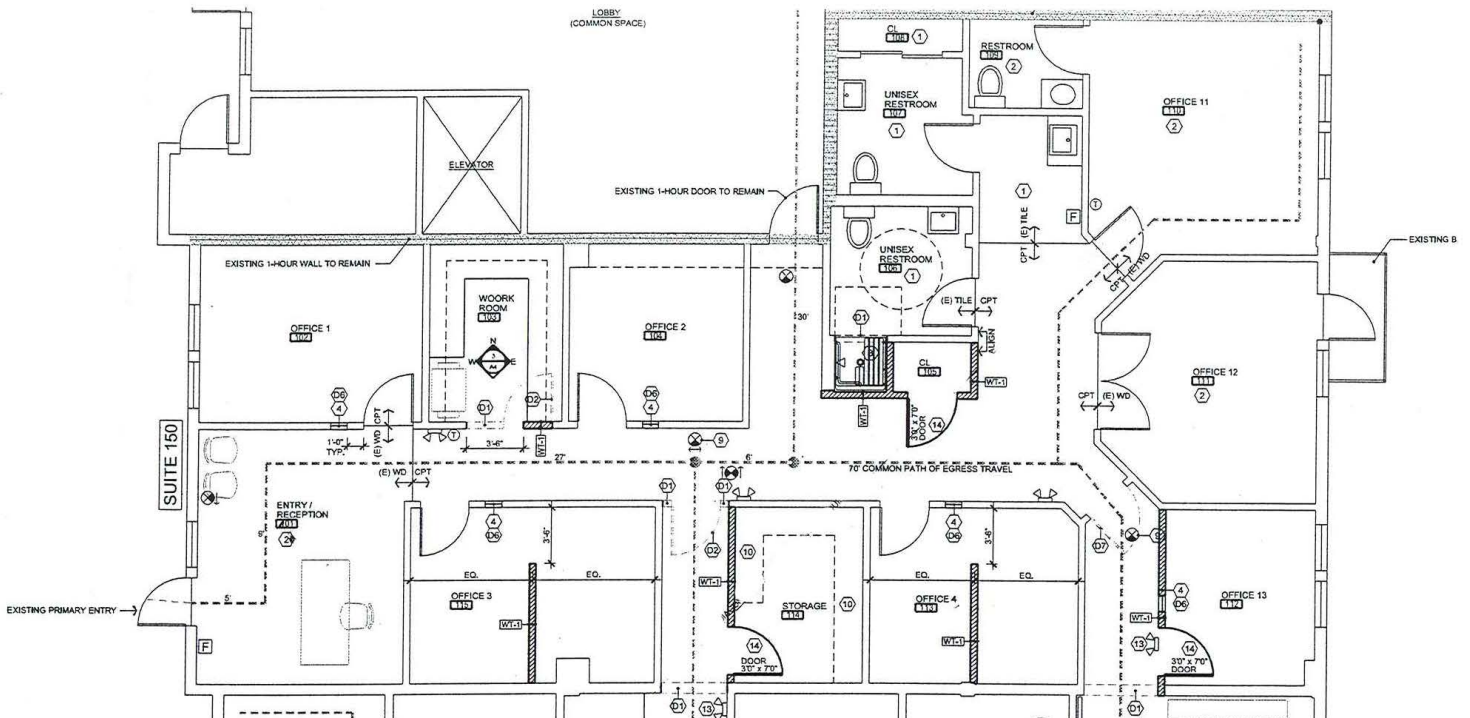
900 SW 5th Avenue • 17th Floor • Portland, OR 97204
503.223.3171 • norris-stevens.com

HUNTERS RIDGE - SUITE 150

20512 SW Roy Rogers Road | Sherwood, OR 97140

FOR SALE

PROPERTY PHOTOS



For more information or a property tour, please contact:

TIM BUDELMAN

503.225.8472

TimB@norris-stevens.com



Information contained herein has been obtained from others and considered to be reliable; however, a prospective purchaser or lessee is expected to verify all information to their own satisfaction.

Norris & Stevens

INVESTMENT REAL ESTATE SERVICES

900 SW 5th Avenue • 17th Floor • Portland, OR 97204
503.223.3171 • norris-stevens.com