

# COMMERCIAL ST ASTORIA RETAIL

1020 Commercial Street | Astoria, OR 97103

FOR SALE



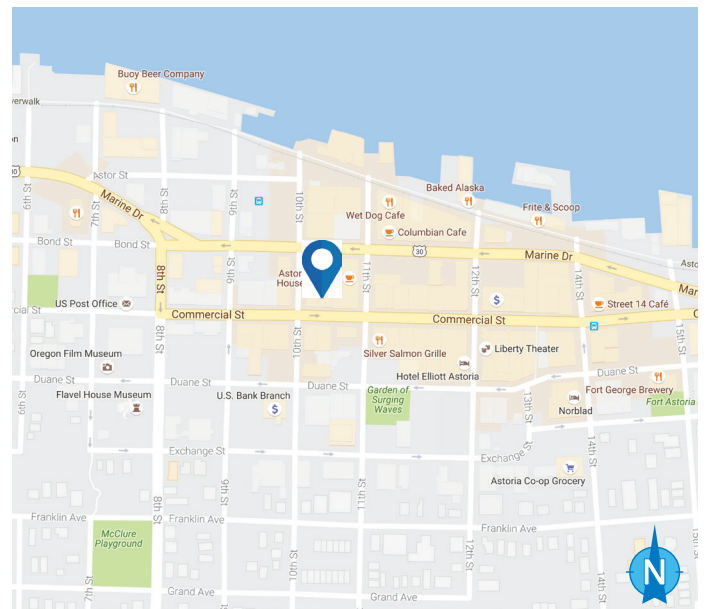
## RETAIL / OFFICE / STORAGE FOR SALE

### DETAILS

- Sale price: \$400,000 (\$100 PSF)
- Fully Occupied

### FEATURES

- Located in vibrant downtown Astoria
- Close to seasonal Sunday market featuring local farmers & artists
- Along Coastal Highway 101
- Two blocks from Astoria Riverwalk
- Great signage and visibility on Commercial Street
- Lower level is sprinkled
- High ceilings



04.26.2024

For more information or a property tour, please contact:

**MICHAEL BROWN**  
503.225.8444  
MikeB@norris-stevens.com

**TODD VANDOMELEN**  
503.225.8475  
ToddV@norris-stevens.com

## Norris & Stevens

INVESTMENT REAL ESTATE SERVICES



Information contained herein has been obtained from others and considered to be reliable; however, a prospective purchaser or lessee is expected to verify all information to his/her own satisfaction. Todd VanDomelelen has an ownership interest in the subject property.

900 SW 5th Avenue • 17th Floor • Portland, OR 97204  
503.223.3171 • norris-stevens.com

# COMMERCIAL ST ASTORIA RETAIL

1020 Commercial Street | Astoria, OR 97103

FOR SALE

PHOTOS / AREA MAP

## INTERIOR PHOTOS



**HOW TO GET AROUND** NOTE: Most of our streets are numerical & alphabetical, i.e. "C"commercial and then "D"uane, etc.

**RIVER WALK**—The River Walk runs parallel to the City Center's main thoroughfare and the trolley route. It's a 4-mile, paved trail extending from the Port of Astoria to the Pier 39. There are trolley stops along the way, but you will have to wait. If you happen to have a smart phone, there is a QR code at the trolley stop you can shoot for trolley tracking or go to [oldregon.com](http://oldregon.com) and search for "trolley tracking". This GPS tracking only works when the trolley is running. Along the trail you'll find benches to rest and enjoy the view, interpretative signage, restaurants, and shops, not to mention the direct interaction with a working waterfront.

**"OLD 300" RIVERFRONT TROLLEY**—This restored 1913 streetcar travels the 4mi. riverfront, and includes narration and interpretation of local history and attractions. Round trip approx. an hour. On board, pay a \$2 fare and you can get on and off as often as you like during the day.

**"THE BUS"** Astoria Transit Center—Located on Marine Dr. between 9th and 10th Streets. Open 7:30 to 6 PM Everyday. 1-866-811-1001 [ridethebus.org](http://ridethebus.org)

**WIFI**

- 3 CUPS COFFEE HOUSE
- ASTORIA COFFEEHOUSE & BISTRO
- DOWNTOWN COFFEE SHOP
- STREET 14 COFFEE
- PORT OFFICE BUILDING
- WET DOG CAFE

**LEGEND**

- ATTRACTIONS
- TROLLEY STOPS
- POINTS OF INTEREST
- RT 11 SHIP SHUTTLE
- PLAYGROUND
- PICNIC TABLE
- HOSPITAL

**MILEAGE**

Safeway to Goonies House .49 mi / .79 km  
 Maritime Museum to Astoria Column 1.08 mi / 1.74 km  
 —Beware the trip to the Column is a steep trek on foot!  
 Distance between various stops along the Riverwalk shown:

Experience diving the world's oceans in breathtaking, high-definition 3D with Jean-Michel Cousteau. 40-min. movie showing everyday at 10am, 11am, noon, 1pm, 2pm and 3pm, except Christmas and Thanksgiving. Admission \$5

**COLUMBIA RIVER MARITIME MUSEUM**  
**SHARKS 3D**  
 PLAYING THRU DEC 2014  
 1792 MARINE DR. ASTORIA WWW.CRFMM.ORG 503.325-2323

**real D 3D**

For more information or a property tour, please contact:

**MICHAEL BROWN**

503.225.8444

MikeB@norris-stevens.com

**TODD VANDOMELEN**

503.225.8475

ToddV@norris-stevens.com

**Norris & Stevens**

INVESTMENT REAL ESTATE SERVICES



Information contained herein has been obtained from others and considered to be reliable; however, a prospective purchaser or lessee is expected to verify all information to his/her own satisfaction. Todd VanDornelen has an ownership interest in the subject property.

900 SW 5th Avenue • 17th Floor • Portland, OR 97204  
 503.223.3171 • [norris-stevens.com](http://norris-stevens.com)

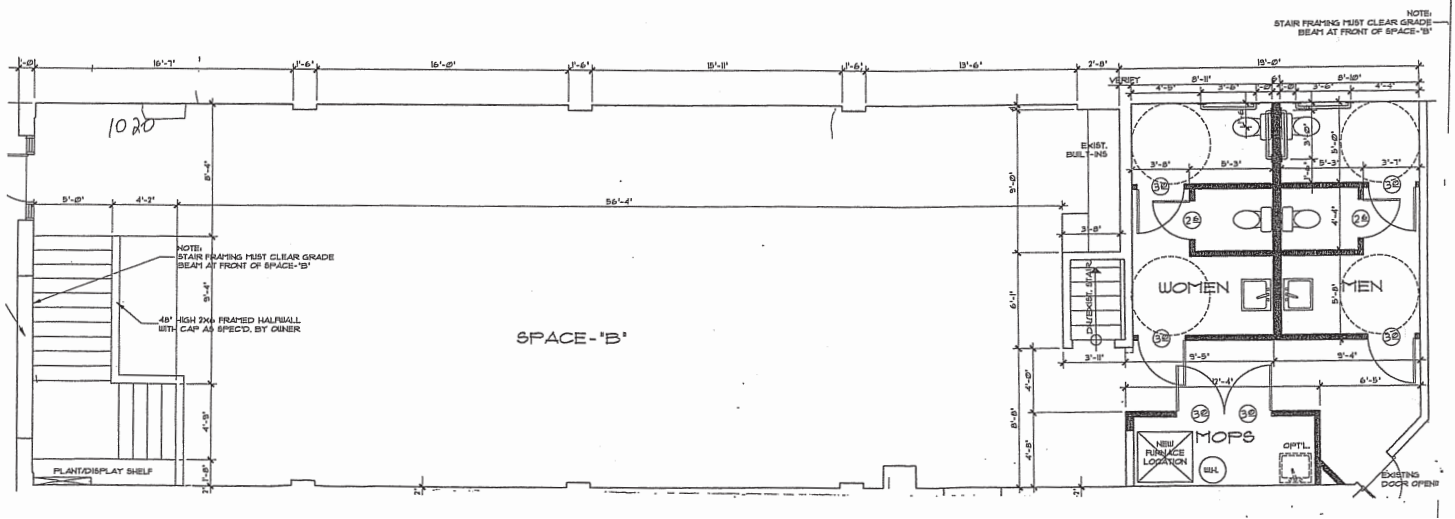
# COMMERCIAL ST ASTORIA RETAIL

1020 Commercial Street | Astoria, OR 97103

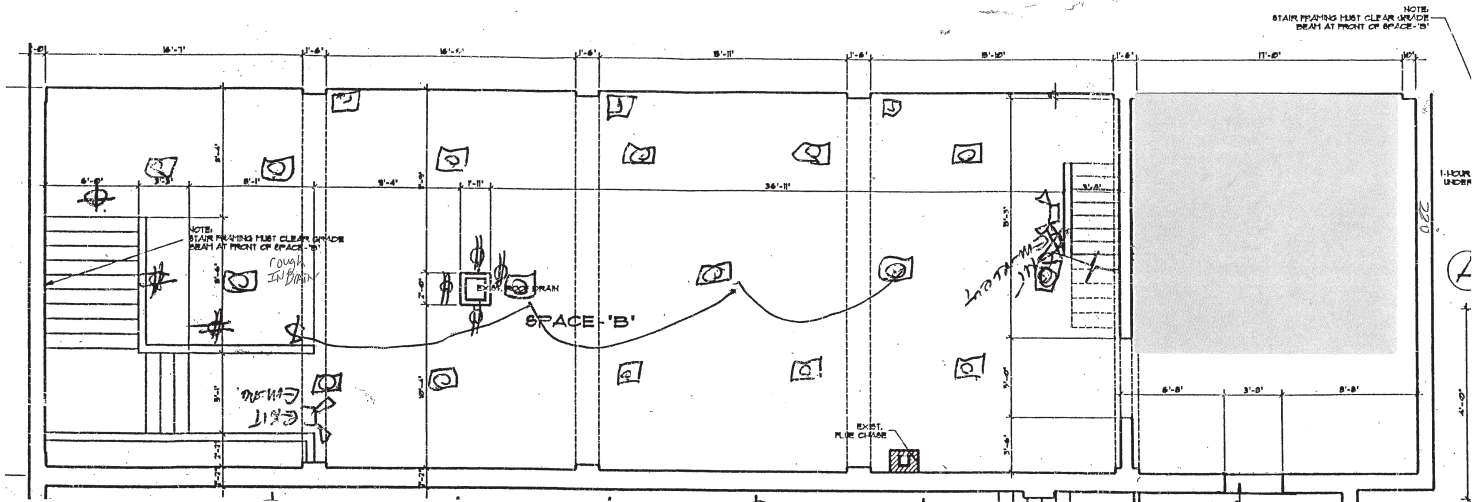
# FOR SALE

## FLOOR PLANS

### GROUND FLOOR PLAN



### LOWER LEVEL FLOOR PLAN



For more information or a property tour, please contact:

**MICHAEL BROWN**  
503.225.8444  
MikeB@norris-stevens.com

**TODD VANDOMELEN**  
503.225.8475  
ToddV@norris-stevens.com

## Norris & Stevens

INVESTMENT REAL ESTATE SERVICES



Information contained herein has been obtained from others and considered to be reliable; however, a prospective purchaser or lessee is expected to verify all information to his/her own satisfaction. Todd VanDomelen has an ownership interest in the subject property.

900 SW 5th Avenue • 17th Floor • Portland, OR 97204  
503.223.3171 • norris-stevens.com