

FOREST GROVE OFFICE

3700 24th Ave | Forest Grove, OR 97116

FOR LEASE



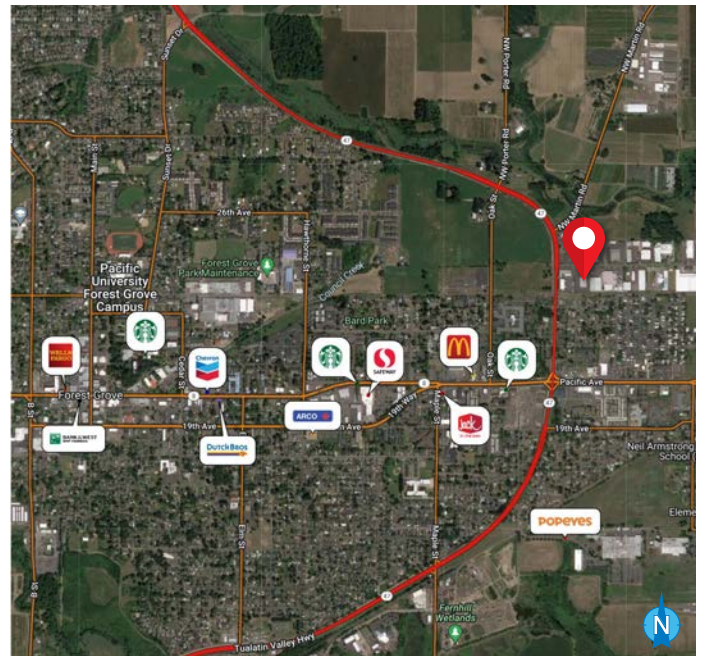
OFFICE SPACE FOR LEASE

DETAILS

- Second floor office: ± 1,425 - 12,477 SF
- Lease rate: \$15.00 PSF, MG

FEATURES

- Open floor plan
- Space is contiguous, but can be demised
- Elevator served
- Two rest rooms and common hallway
- Abundant parking
- Located just off of Highway 47 and minutes from Pacific Avenue and downtown Forest Grove



06.20.2023

For more information or a property tour, please contact:

TIM BUDELMAN
503.225.8472
TimB@norris-stevens.com

RAYMOND DUCHEK
503.225.8492
RaymondD@norris-stevens.com

Norris & Stevens

INVESTMENT REAL ESTATE SERVICES



Information contained herein has been obtained from others and considered to be reliable; however, a prospective purchaser or lessee is expected to verify all information to his/her own satisfaction.

900 SW 5th Avenue • 17th Floor • Portland, OR 97204
503.223.3171 • norris-stevens.com

FOREST GROVE OFFICE

3700 24th Ave | Forest Grove, OR 97116

FOR LEASE

PROPERTY PHOTOS



For more information or a property tour, please contact:

TIM BUDELMAN
503.225.8472
TimB@norris-stevens.com

RAYMOND DUCHEK
503.225.8492
RaymondD@norris-stevens.com

Norris & Stevens

INVESTMENT REAL ESTATE SERVICES



Information contained herein has been obtained from others and considered to be reliable; however, a prospective purchaser or lessee is expected to verify all information to his/her own satisfaction.

900 SW 5th Avenue • 17th Floor • Portland, OR 97204
503.223.3171 • norris-stevens.com