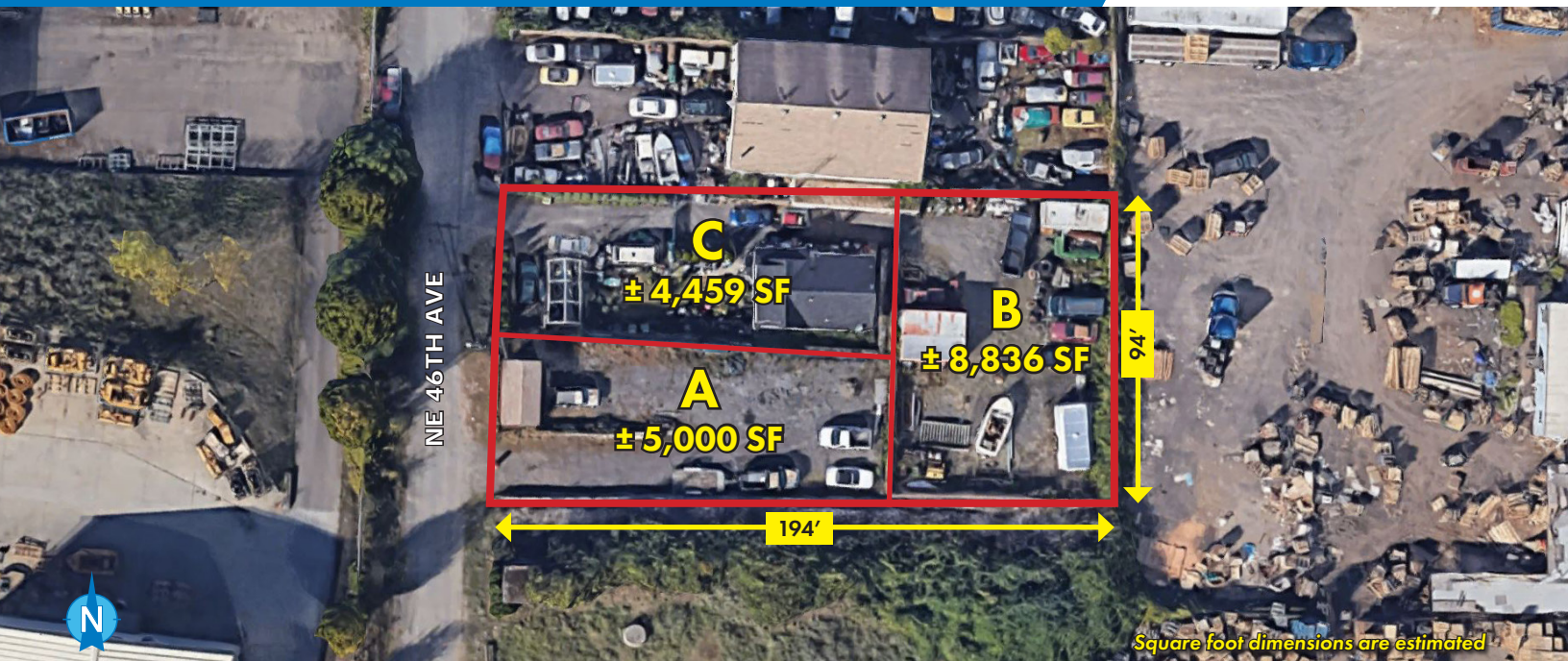


6834 NE 46TH AVE

Portland, OR 97218

FOR LEASE



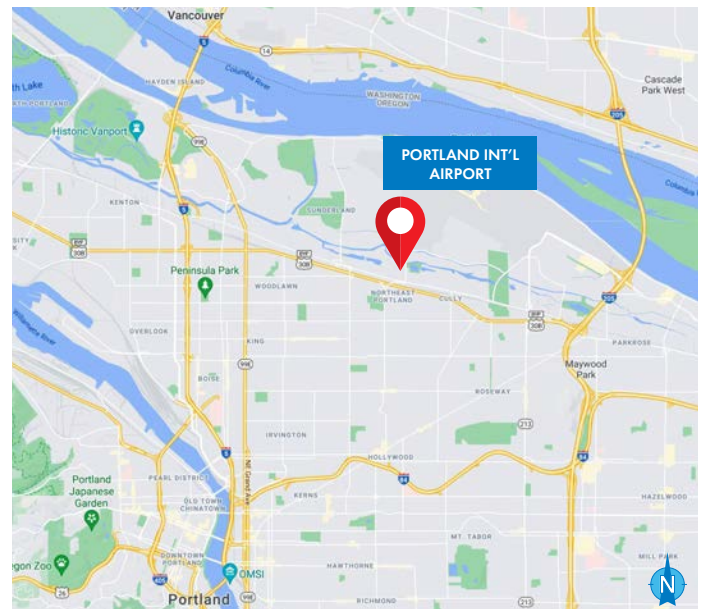
INDUSTRIAL PROPERTY WITH YARD SPACE FOR LEASE

DETAILS

- Lease Rate:
 - A: \$2,800/Month, MG
 - A+B: \$3,000/Month, MG
 - A+B+C: \$4,500/Month, MG
- Land Size: ± 0.42 AC (± 18,295 SF)
- Initially built: 1943
- Zoning: General Industrial 2

FEATURES

- Outstanding location offering easy access to I-205, I-5, NE Columbia Blvd and Portland International Airport
- Zoning allows for a wide range of uses, including: manufacturing, warehouse/freight, wholesale sales, railroad yards, self-serve storage, vehicle repair, retail sales and office
- Partially paved/graveled
- Property located in Local Improvement District (LID)
 - for more information, click [here](#)
 - For more in-depth information, click [here](#)
 - For assessment details, click [here](#)



03.02.2023

For more information or a property tour, please contact:

GABE SCHNITZER
503.225.8443
GabeS@norris-stevens.com

GREG NESTING
503.225.8440
GregN@norris-stevens.com

Norris & Stevens

INVESTMENT REAL ESTATE SERVICES



Information contained herein has been obtained from others and considered to be reliable; however, a prospective purchaser or lessee is expected to verify all information to his/her own satisfaction.

900 SW 5th Avenue • 17th Floor • Portland, OR 97204
503.223.3171 • norris-stevens.com