

PACIFIC PLAZA

2462 SE 82nd Ave | Portland, OR 97216

FOR LEASE

NEW CONSTRUCTION



RETAIL/OFFICE SPACE FOR LEASE

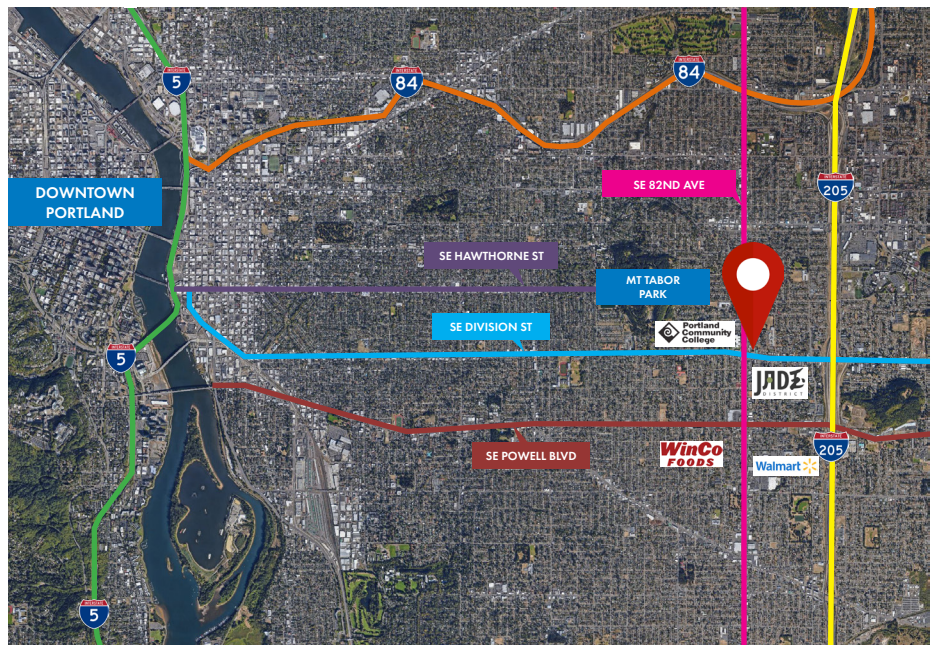
DETAILS

± 2,740 - 15,583 SF available

Call for pricing details

FEATURES

- Retail/office with flexible sizes
- New construction building
- High visibility
- Next to various public transportation stops
- Ample on-site parking
- High traffic volume intersection:
 - 31,000 VPD (SE 82nd)
 - 22,000 VPD (SE Division)



10.23.2023

For more information or a property tour, please contact:

LUIS MARTIN DEL CAMPO

503.416.8422

LuisM@norris-stevens.com

Norris & Stevens

INVESTMENT REAL ESTATE SERVICES



Information contained herein has been obtained from others and considered to be reliable; however, a prospective purchaser or lessee is expected to verify all information to their own satisfaction.

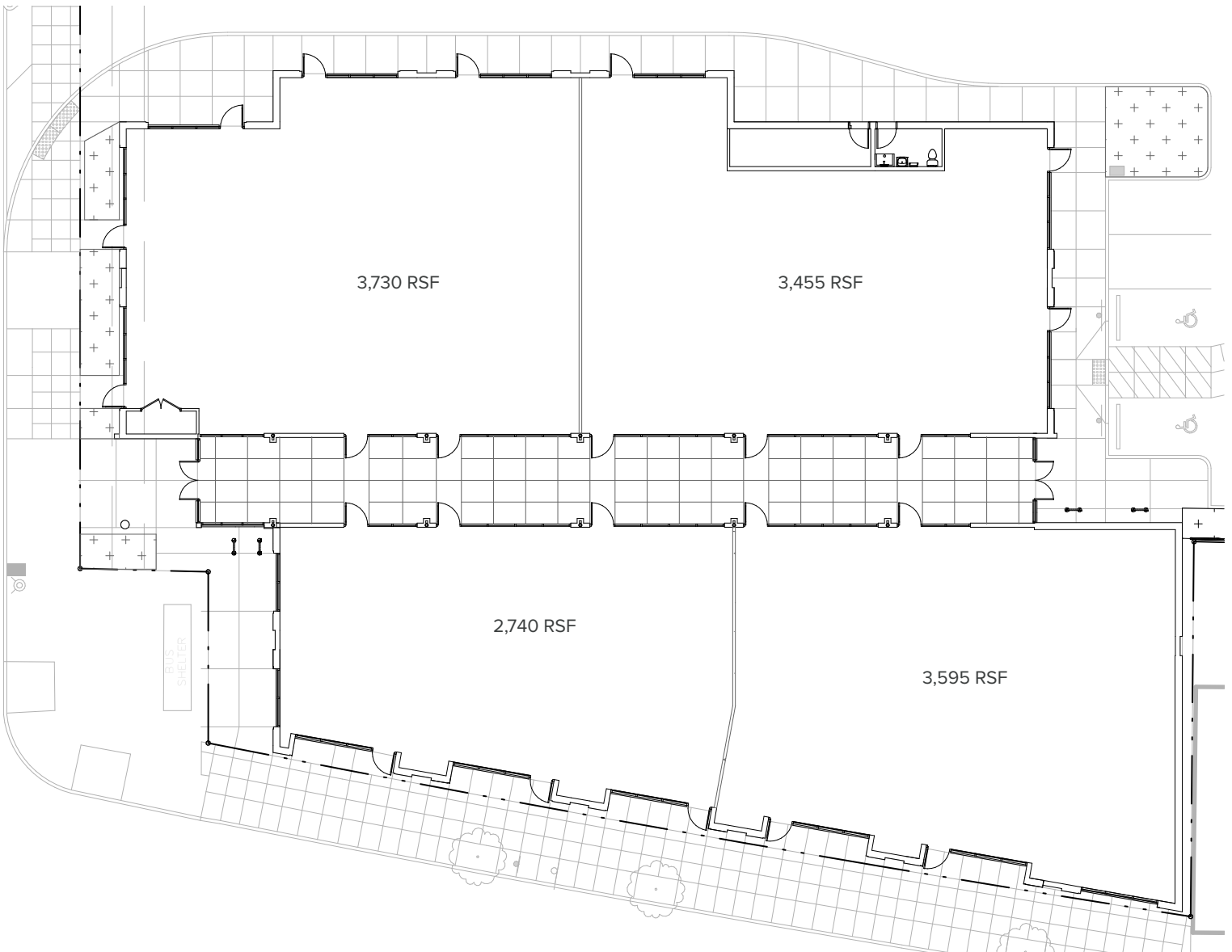
900 SW 5th Avenue • 17th Floor • Portland, OR 97204
503.223.3171 • norris-stevens.com

PACIFIC PLAZA

2462 SE 82nd Ave | Portland, OR 97216

FOR LEASE

TENANT LAYOUT OPTION



WALK SCORE

91

BIKE SCORE

99

For more information or a property tour, please contact:

LUIS MARTIN DEL CAMPO

503.416.8422

LuisM@norris-stevens.com

Norris & Stevens

INVESTMENT REAL ESTATE SERVICES



Information contained herein has been obtained from others and considered to be reliable; however, a prospective purchaser or lessee is expected to verify all information to their own satisfaction.

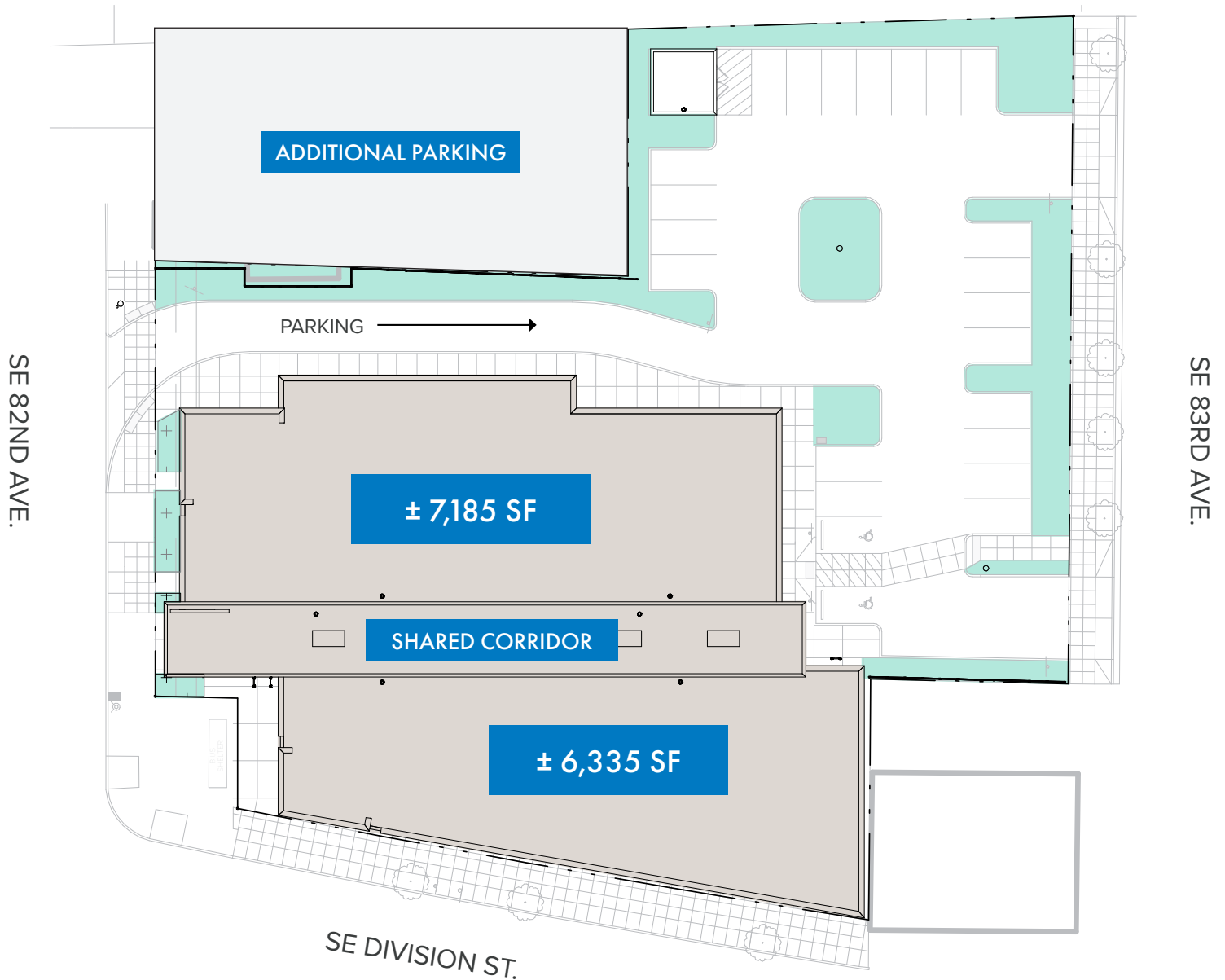
900 SW 5th Avenue • 17th Floor • Portland, OR 97204
503.223.3171 • norris-stevens.com

PACIFIC PLAZA

2462 SE 82nd Ave | Portland, OR 97216

FOR LEASE

SITE PLAN



WALK SCORE

91

BIKE SCORE

99

For more information or a property tour, please contact:

LUIS MARTIN DEL CAMPO

503.416.8422

LuisM@norris-stevens.com

Norris & Stevens

INVESTMENT REAL ESTATE SERVICES



Information contained herein has been obtained from others and considered to be reliable; however, a prospective purchaser or lessee is expected to verify all information to their own satisfaction.

900 SW 5th Avenue • 17th Floor • Portland, OR 97204
503.223.3171 • norris-stevens.com

PACIFIC PLAZA

2462 SE 82nd Ave | Portland, OR 97216

FOR LEASE

BUILDING PHOTOS



REAR ENTRY



SHARED CORRIDOR

For more information or a property tour, please contact:

LUIS MARTIN DEL CAMPO

503.416.8422

LuisM@norris-stevens.com

Norris & Stevens

INVESTMENT REAL ESTATE SERVICES



Information contained herein has been obtained from others and considered to be reliable; however, a prospective purchaser or lessee is expected to verify all information to their own satisfaction.

900 SW 5th Avenue • 17th Floor • Portland, OR 97204
503.223.3171 • norris-stevens.com