

# OLSON MEMORIAL CLINIC

16455 & 16463 Boones Ferry Rd | Lake Oswego, OR 97035

FOR LEASE



## OFFICE SUITES AVAILABLE FOR LEASE

### DETAILS

- Call for Rate

16463 Boones Ferry

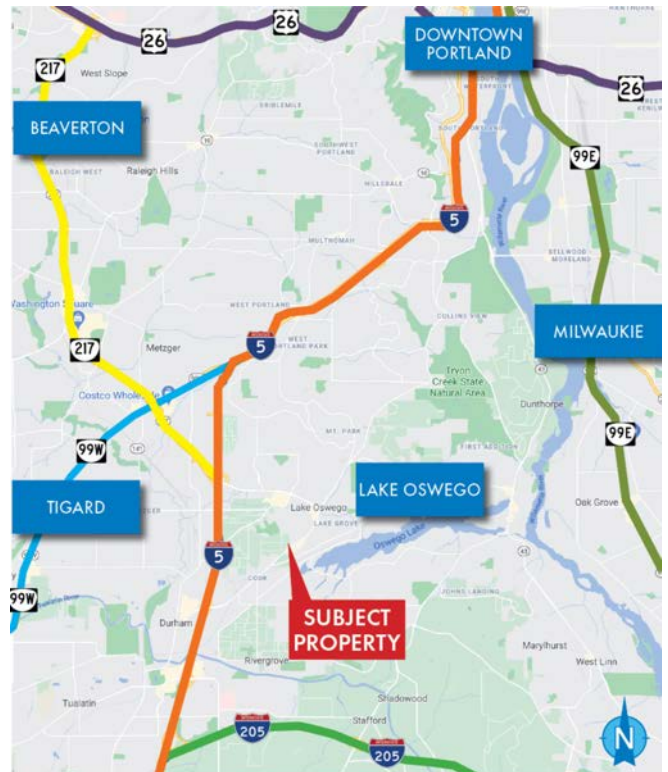
- Suite 200: ± 955 SF

16455 Boones Ferry

- Suite 500-A: ± 2,800 SF

### FEATURES

- Medical office park
- Ample parking with 4.6/1,000
- Extremely visible in steady traffic area
- Easy access to I-5



12.18.2023

For more information or a property tour, please contact:

**TIM PFEIFFER**

503.225.8455

timp@norris-stevens.com



Information contained herein has been obtained from others and considered to be reliable; however, a prospective purchaser or lessee is expected to verify all information to their own satisfaction.

## Norris & Stevens

INVESTMENT REAL ESTATE SERVICES

900 SW 5th Avenue • 17th Floor • Portland, OR 97204  
503.223.3171 • norris-stevens.com

# OLSON MEMORIAL CLINIC

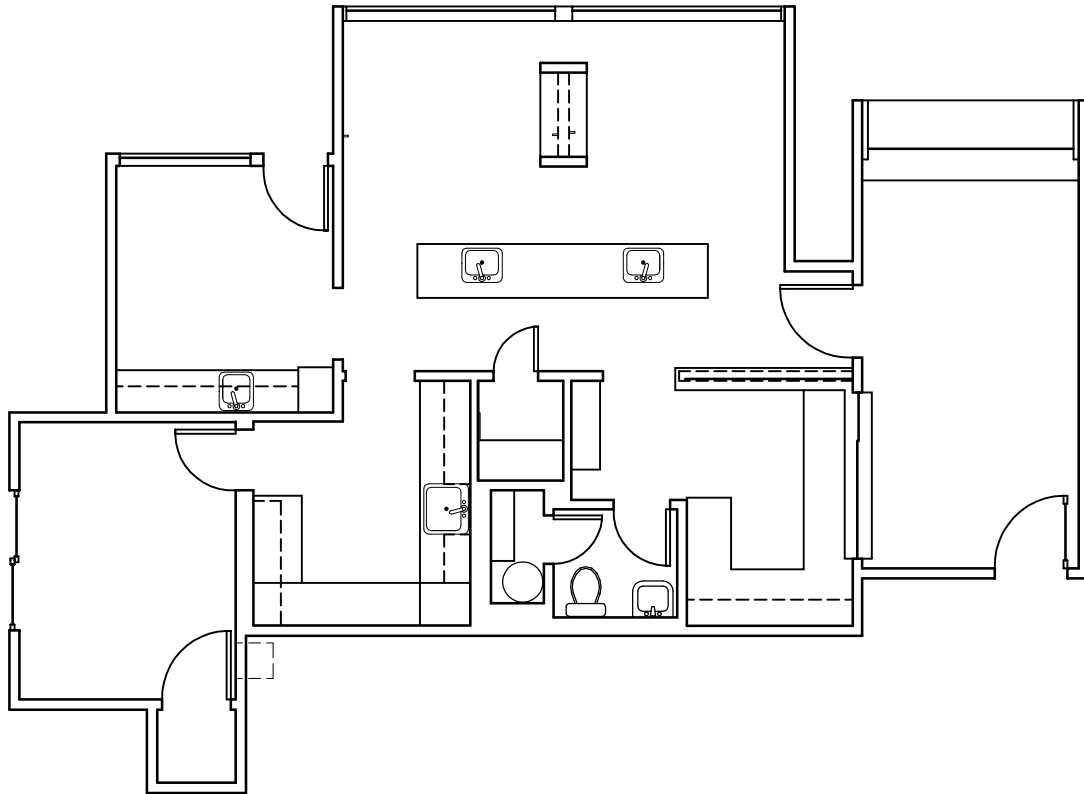
16455 & 16463 Boones Ferry Rd | Lake Oswego, OR 97035

## FOR LEASE

16463 - SUITE 200



± 955 SF



For more information or a property tour, please contact:

**TIM PFEIFFER**  
503.225.8455  
timp@norris-stevens.com

## Norris & Stevens

INVESTMENT REAL ESTATE SERVICES



Information contained herein has been obtained from others and considered to be reliable; however, a prospective purchaser or lessee is expected to verify all information to their own satisfaction.

900 SW 5th Avenue • 17th Floor • Portland, OR 97204  
503.223.3171 • norris-stevens.com

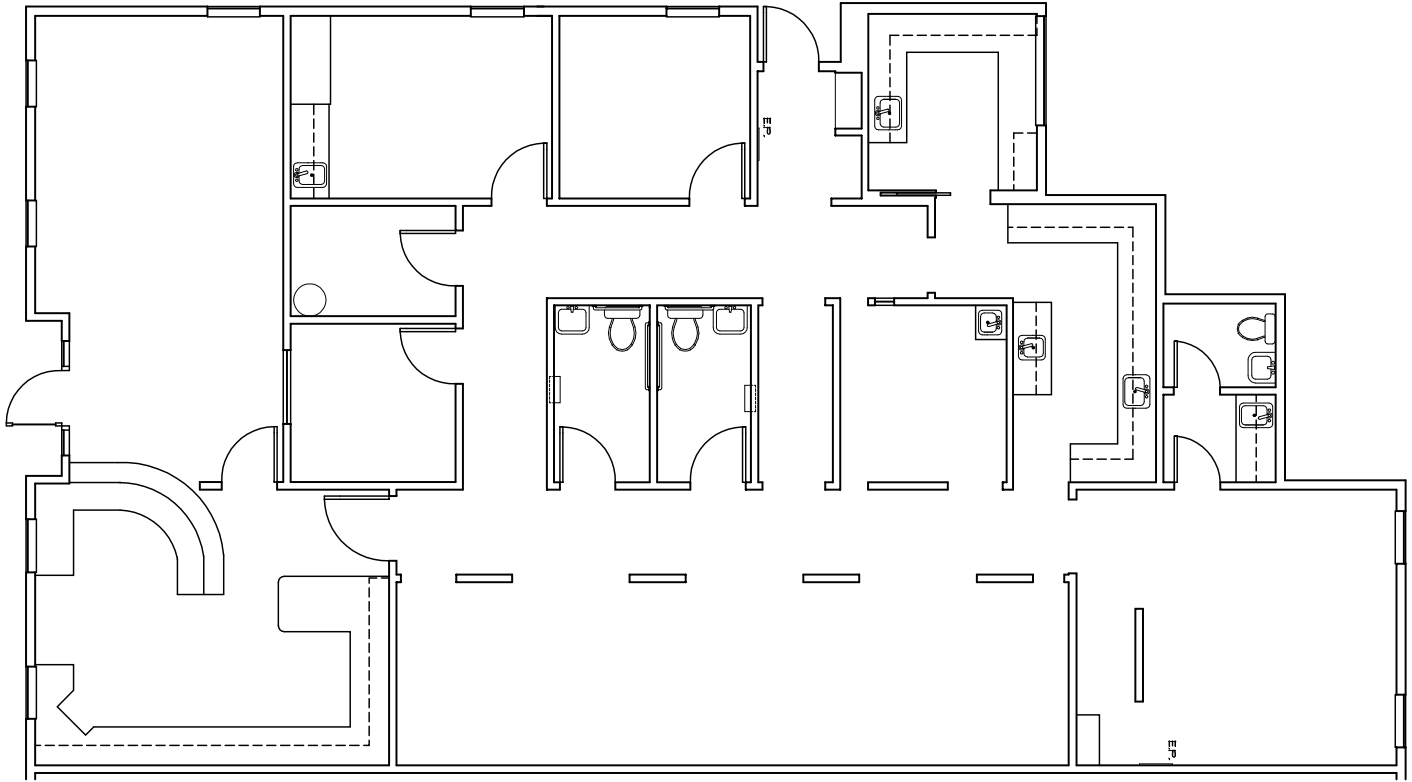
# OLSON MEMORIAL CLINIC

16455 & 16463 Boones Ferry Rd | Lake Oswego, OR 97035

## FOR LEASE

16455 - SUITE 500-A

± 2,800 SF



For more information or a property tour, please contact:

**TIM PFEIFFER**  
503.225.8455  
timp@norris-stevens.com

## Norris & Stevens

INVESTMENT REAL ESTATE SERVICES



Information contained herein has been obtained from others and considered to be reliable; however, a prospective purchaser or lessee is expected to verify all information to their own satisfaction.

900 SW 5th Avenue • 17th Floor • Portland, OR 97204  
503.223.3171 • norris-stevens.com

# OLSON MEMORIAL CLINIC

16455 & 16463 Boones Ferry Rd | Lake Oswego, OR 97035

## FOR LEASE

16463 - SUITE 400 ± 5,060 SF



For more information or a property tour, please contact:

**TIM PFEIFFER**

503.225.8455

timp@norris-stevens.com



*Information contained herein has been obtained from others and considered to be reliable; however, a prospective purchaser or lessee is expected to verify all information to their own satisfaction.*

## Norris & Stevens

INVESTMENT REAL ESTATE SERVICES

900 SW 5th Avenue • 17th Floor • Portland, OR 97204  
503.223.3171 • norris-stevens.com