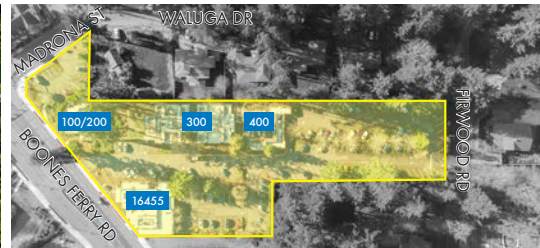


OLSON MEMORIAL CLINIC CAMPUS

16455, 16463, 16464 Boones Ferry Road | Lake Oswego, OR 97035

PREMIERE MEDICAL
OFFICE INVESTMENT
IN LAKE OSWEGO



OFFERING SUMMARY

Olson Clinic Campus: \$9,500,000

PROPERTY OVERVIEW

Building Sq. Ft.: ± 20,651 SF

Campus Land Size: ± 2.87 acres (124,962 SF)

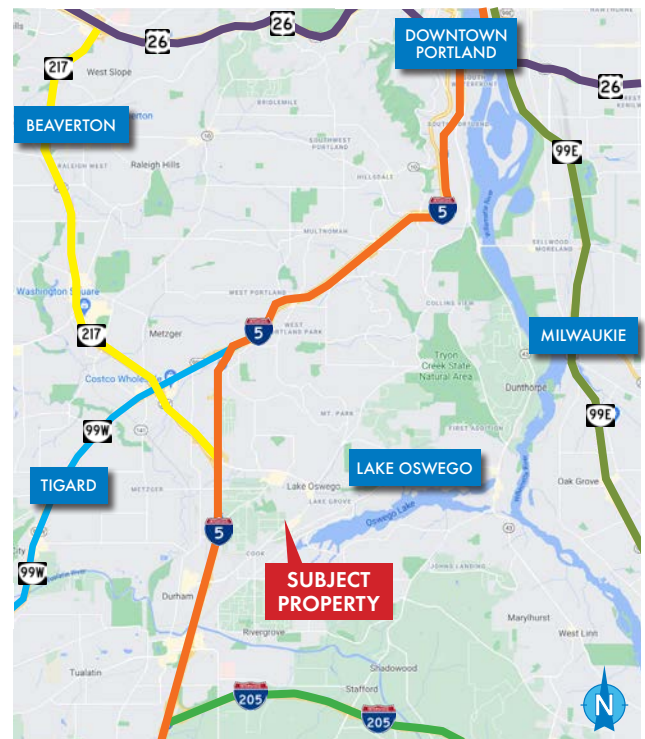
Year Built: 1969

Zoning: OC; GC; R-8.5; R-7.5

INVESTMENT HIGHLIGHTS

- Prime medical office park investment
- Future redevelopment opportunity
- Re-tenating and repositioning opportunities in near-term
- Gateway to Lake Grove commercial district & affluent Lake Oswego, Oregon
- Family owned & operated medical office park since 1972 (1st time on the market for sale)
- Strong demographics with easy access to I-5, retail and services

SELLER FINANCING AVAILABLE



03.01.2022

To view the full Offering Memorandum, please contact:

TIMOTHY S. MITCHELL
503.225.8433
timm@norris-stevens.com

DAVID C. CHATFIELD
503.225.8487
davidc@norris-stevens.com

Norris & Stevens

INVESTMENT REAL ESTATE SERVICES



Information contained herein has been obtained from others and considered to be reliable; however, a prospective purchaser or lessee is expected to verify all information to his/her own satisfaction.

900 SW 5th Avenue • 17th Floor • Portland, OR 97204
503.223.3171 • norris-stevens.com