

4445 SW BARBUR BOULEVARD

Portland, OR 97239

FOR LEASE



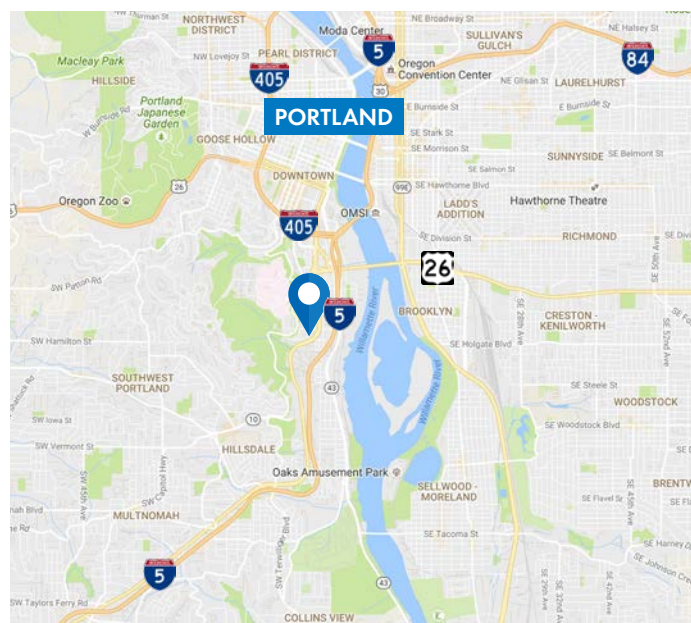
OFFICE SPACE FOR LEASE

DETAILS

- Suite 102: ± 225 SF
- Suite 204: ± 1,868 SF
- Rate: \$21 PSF, FS

FEATURES

- #102 - Ground floor executive office
- #204 - Creative open floor plan with 2 private offices; designed for PT/therapy
- Free parking
- Close-in location
- CBD without the CBD and chaos



09.07.2021

For more information or a property tour, please contact:

DUANE LINK

503.225.8465

Duanel@norris-stevens.com



Information contained herein has been obtained from others and considered to be reliable; however, a prospective purchaser or lessee is expected to verify all information to his/her own satisfaction.

Norris & Stevens

INVESTMENT REAL ESTATE SERVICES

900 SW 5th Avenue • 17th Floor • Portland, OR 97204
503.223.3171 • norris-stevens.com

4445 SW BARBUR BOULEVARD

Portland, OR 97239

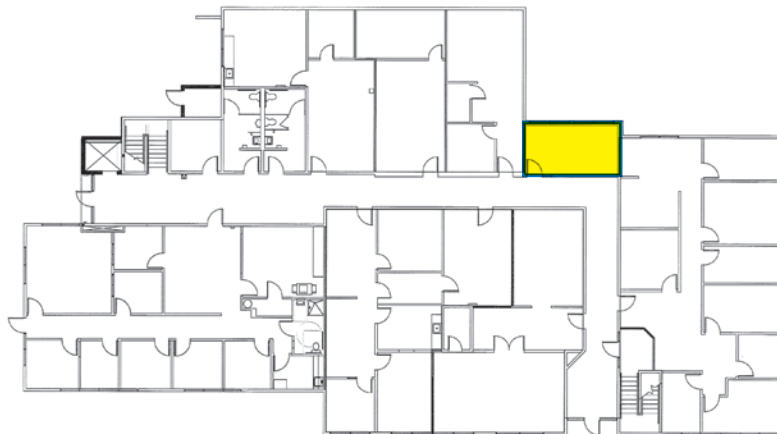
FOR LEASE

PROPERTY PHOTOS & FLOOR PLANS



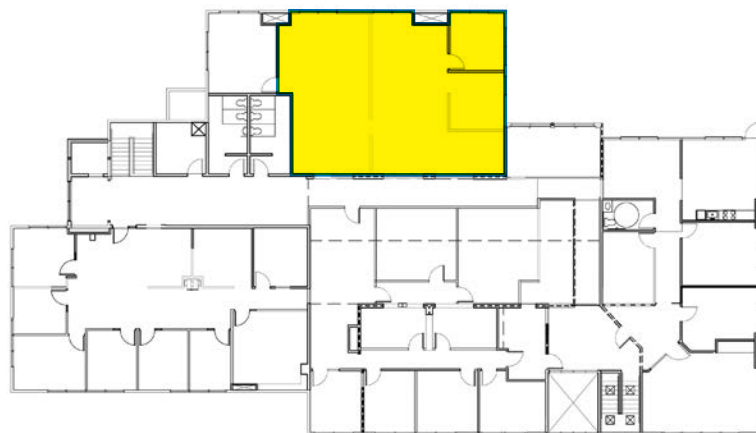
FIRST FLOOR

SUITE 102
± 225 SF



SECOND FLOOR

SUITE 204
± 1,868 SF



For more information or a property tour, please contact:

DUANE LINK
503.225.8465
Duanel@norris-stevens.com



Information contained herein has been obtained from others and considered to be reliable; however, a prospective purchaser or lessee is expected to verify all information to his/her own satisfaction.

Norris & Stevens

INVESTMENT REAL ESTATE SERVICES

900 SW 5th Avenue • 17th Floor • Portland, OR 97204
503.223.3171 • norris-stevens.com