

# GRIFFITH BUSINESS PARK

4800 SW Griffith Drive | Beaverton, OR 97005

FOR LEASE



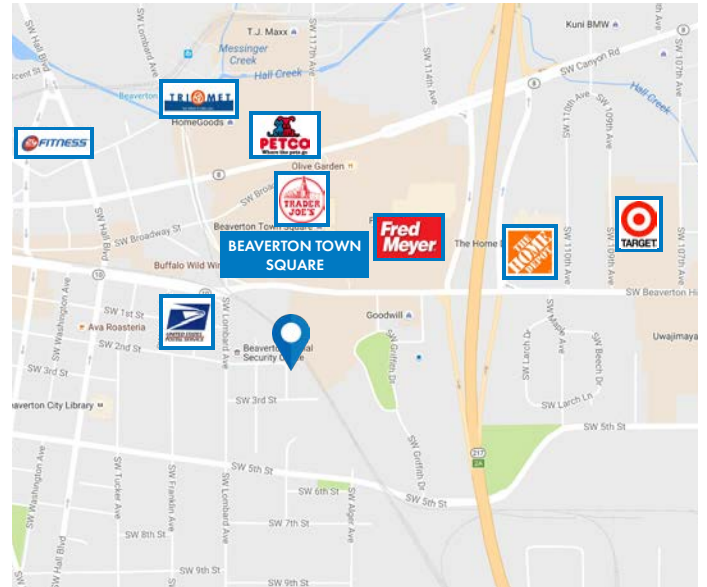
## OFFICE SPACE AVAILABLE FOR LEASE

### DETAILS

- Lease rate: \$21 PSF, FS
- Suite 250: ± 2,604 SF

### FEATURES

- Quiet business park with local ownership
- Updated common areas, HVAC, new lighting - updated restrooms
- Freshly sealed parking lot
- Conference room, break room
- Elevator served
- Ample on-site parking - with new landscaping
- Along TriMet bus lines and easy access to TriMet MAX line, Hwy 10, and Hwy 217
- Just south of Beaverton Town Square



02.02.2024

For more information or a property tour, please contact:

**DUANE LINK**

503.225.8465

Duanel@norris-stevens.com

**DOUG CARTER**

503.225.8499

DougC@norris-stevens.com

## Norris & Stevens

INVESTMENT REAL ESTATE SERVICES



*Information contained herein has been obtained from others and considered to be reliable; however, a prospective purchaser or lessee is expected to verify all information to their own satisfaction.*

900 SW 5th Avenue • 17th Floor • Portland, OR 97204

503.223.3171 • norris-stevens.com

# GRIFFITH BUSINESS PARK

4800 SW Griffith Drive | Beaverton, OR 97005

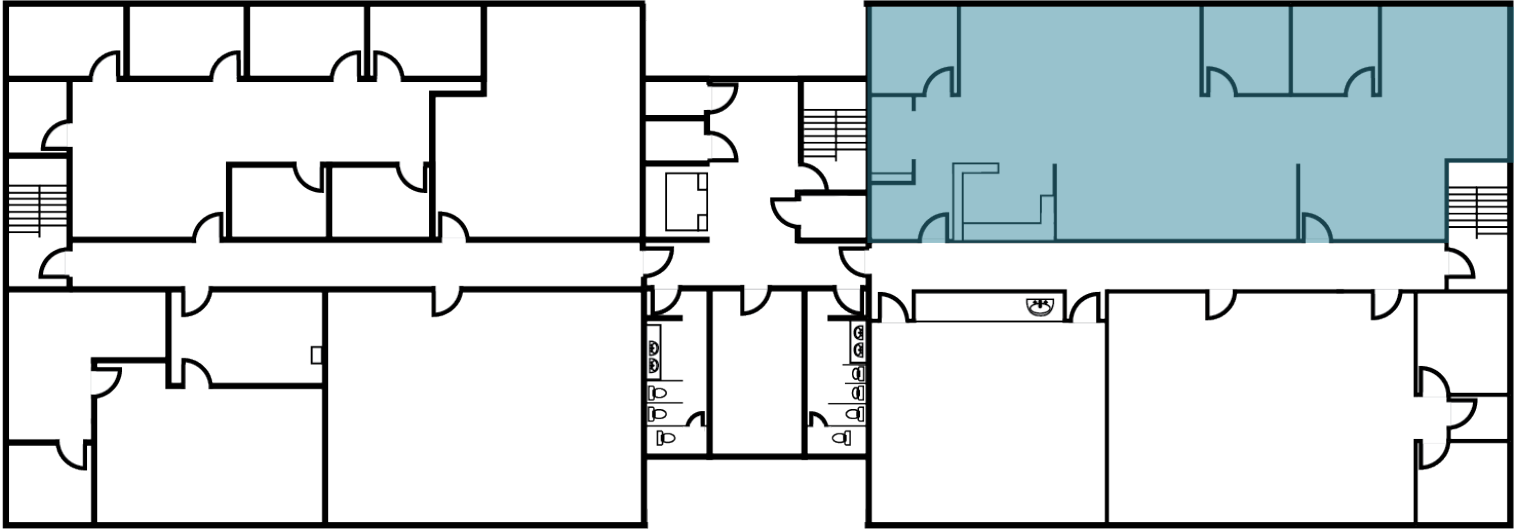
## FOR LEASE

FLOOR PLANS / PHOTOS

### SECOND FLOOR

HIGHWAY 217

**AVAILABLE**  
**SUITE 250**  
± 2,604 SF



SW GRIFFITH DRIVE



For more information or a property tour, please contact:

**DUANE LINK**

503.225.8465

Duanel@norris-stevens.com

**DOUG CARTER**

503.225.8499

DougC@norris-stevens.com

## Norris & Stevens

INVESTMENT REAL ESTATE SERVICES



Information contained herein has been obtained from others and considered to be reliable; however, a prospective purchaser or lessee is expected to verify all information to their own satisfaction.

900 SW 5th Avenue • 17th Floor • Portland, OR 97204

503.223.3171 • norris-stevens.com