

THE SHOPPES AT PROGRESS RIDGE

15000 SW Barrows Rd | Beaverton, OR 97007

FOR SUBLEASE



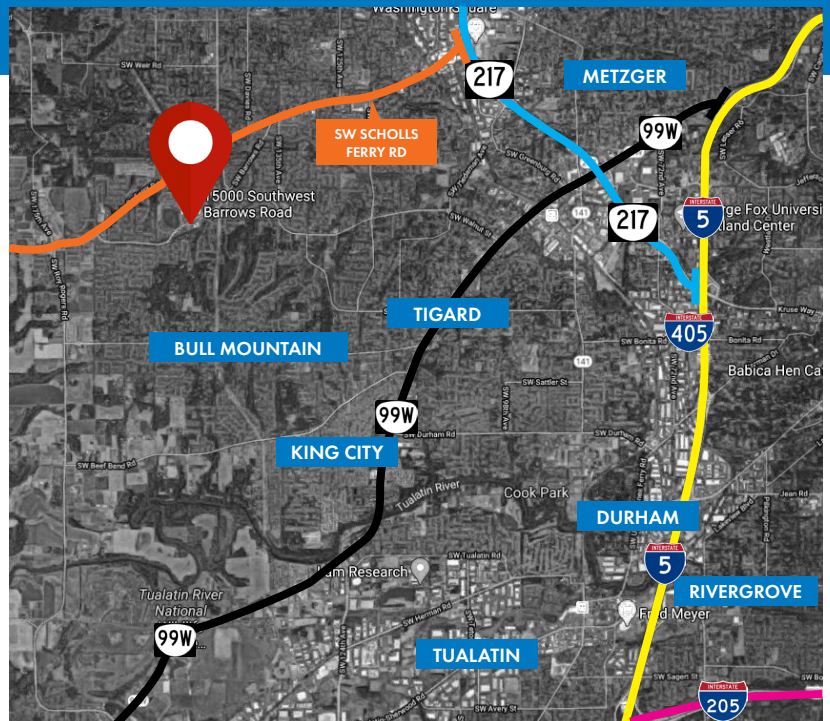
RETAIL/OFFICE SPACE FOR SUBLEASE

DETAILS

- Lease rate: Call for details / NNN
- Suite 101: ± 2,913 SF

FEATURES

- Great street signage exposure
- Ideal for medical use
- Serviced elevator & ADA restroom access
- Plentiful parking
- Excellent amenities within walking distance



04.01.2025

For more information or a property tour, please contact:

TIM PFEIFFER
503.225.8455
TimP@norris-stevens.com



Information contained herein has been obtained from others and considered to be reliable; however, a prospective purchaser or lessee is expected to verify all information to his/her own satisfaction.

Norris & Stevens

INVESTMENT REAL ESTATE SERVICES

900 SW 5th Avenue • 17th Floor • Portland, OR 97204
503.223.3171 • norris-stevens.com

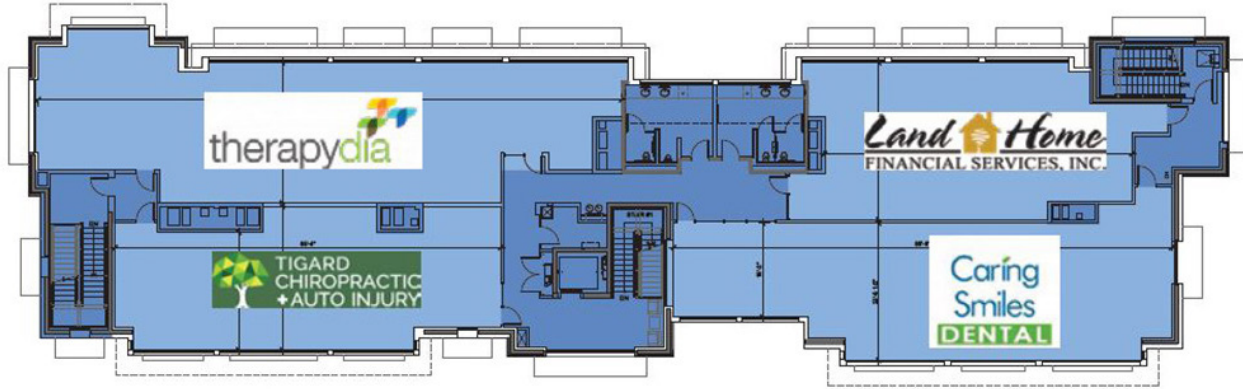
THE SHOPPES AT PROGRESS RIDGE

15000 SW Barrows Rd | Beaverton, OR 97007

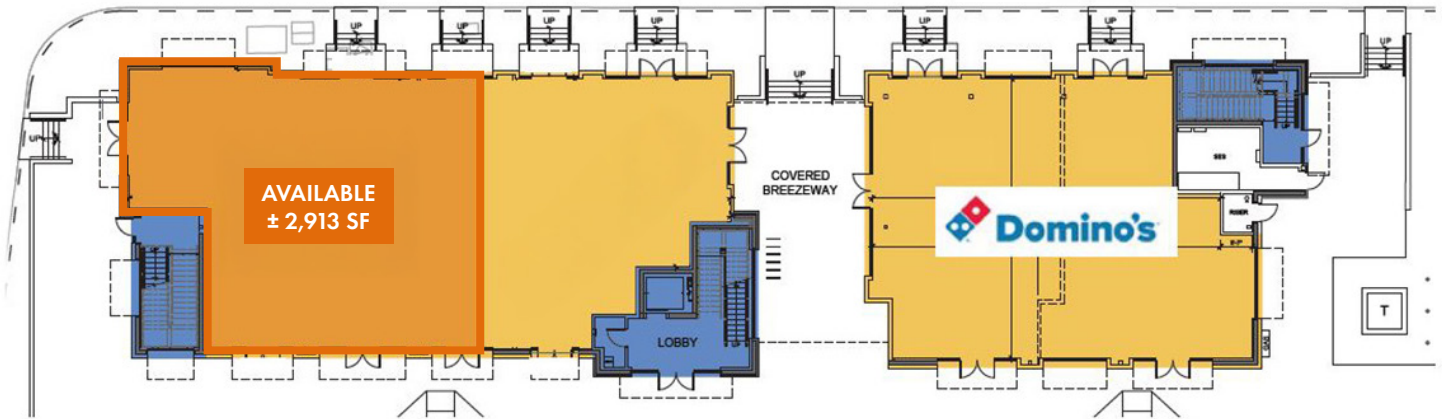
FOR SUBLEASE

FLOOR PLAN & PROPERTY PHOTOS

SECOND FLOOR



GROUND FLOOR



For more information or a property tour, please contact:

TIM PFEIFFER
503.225.8455
TimP@norris-stevens.com



Information contained herein has been obtained from others and considered to be reliable; however, a prospective purchaser or lessee is expected to verify all information to his/her own satisfaction.

Norris & Stevens

INVESTMENT REAL ESTATE SERVICES

900 SW 5th Avenue • 17th Floor • Portland, OR 97204
503.223.3171 • norris-stevens.com

THE SHOPPES AT PROGRESS RIDGE

15000 SW Barrows Rd | Beaverton, OR 97007

FOR SUBLEASE

SURROUNDING AREA



NEARBY BITES AND BEVERAGES

- | | |
|--|----------------------------|
| 1 Ava Roasteria - Progress Ridge | 10 Menchie's Frozen Yogurt |
| 2 The Growlerie | 11 Little Big Burger |
| 3 La Provence Boulangerie & Patisserie | 12 AMC Dine-In |
| 4 T4 Tea House | 13 The Ridge Grill |
| 5 Pho Nam | 14 Godfather's Pizza |
| 6 Dot Sugar | 15 Starbucks |
| 7 Domino's Pizza | |
| 8 Big Al's | |
| 9 Bamboo Boba | |

ADDITIONAL RETAIL

- | | |
|-------------------------------------|------------|
| 1 The Barbers | 10 Safeway |
| 2 Rivermark Community Credit Union | |
| 3 Fit Foods | |
| 4 Rush Bowls | |
| 5 When the Shoe Fits Progress Ridge | |
| 6 Crumbl | |
| 7 AT&T Store | |
| 8 New Seasons Market | |
| 9 Ace Hardware | |

For more information or a property tour, please contact:

TIM PFEIFFER
503.225.8455
TimP@norris-stevens.com



Information contained herein has been obtained from others and considered to be reliable; however, a prospective purchaser or lessee is expected to verify all information to his/her own satisfaction.

Norris & Stevens

INVESTMENT REAL ESTATE SERVICES

900 SW 5th Avenue • 17th Floor • Portland, OR 97204
503.223.3171 • norris-stevens.com