

# SHERWOOD INDUSTRIAL PARK

20746 SW Olds Place | Sherwood, OR 97140

## FOR LEASE



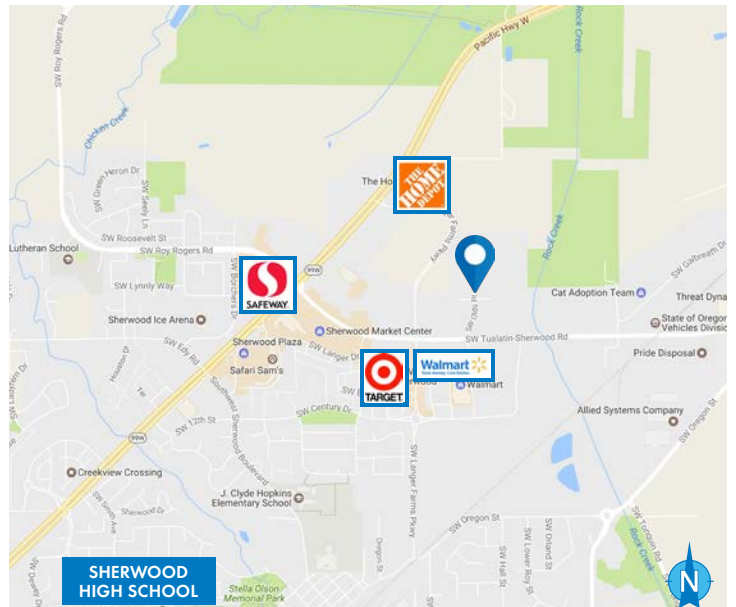
### INDUSTRIAL SPACE FOR LEASE

#### DETAILS

- Lease Rate: \$1.06/SF/NNN
- Suite 202: ± 2,313 SF - Warehouse with small office  
\* Available Nov. 1
- Suite 301: ± 1,369 SF - Office space only
- Suite 302: ± 766 SF - Office space only

#### FEATURES

- 3 building industrial center
- Warehouse with offices and grade doors
- Heavy on-site parking
- Just off SW Tualatin Sherwood Road with easy access to Hwy 99
- Close to Sherwood Market Center, Parkway Village at Sherwood, Walmart, Target, and Home Depot
- Located in the heart of the Sherwood-Tualatin business markets



09.09.2021

For More Information or a Property Tour, Please Contact:

**NICK CHESSAR**

503.225.8469

NickC@norris-stevens.com

**SCOTT FINNEY, SIOR**

503.225.8431

ScottF@norris-stevens.com

## Norris & Stevens

INVESTMENT REAL ESTATE SERVICES



Information contained herein has been obtained from others and considered to be reliable; however, a prospective purchaser or lessee is expected to verify all information to his/her own satisfaction.

900 SW 5th Avenue • 17th Floor • Portland, OR 97204

503.223.3171 • norris-stevens.com

# SHERWOOD INDUSTRIAL PARK

20746 SW Olds Place | Sherwood, OR 97140

## FOR LEASE

### SITE PLAN

Suite 202: ± 2,313 SF  
Suite 301: ± 1,369 SF  
Suite 302: ± 766 SF



For More Information or a Property Tour, Please Contact:

**NICK CHESSAR**  
503.225.8469  
NickC@norris-stevens.com

**SCOTT FINNEY, SIOR**  
503.225.8431  
ScottF@norris-stevens.com

## Norris & Stevens

INVESTMENT REAL ESTATE SERVICES



Information contained herein has been obtained from others and considered to be reliable; however, a prospective purchaser or lessee is expected to verify all information to his/her own satisfaction.

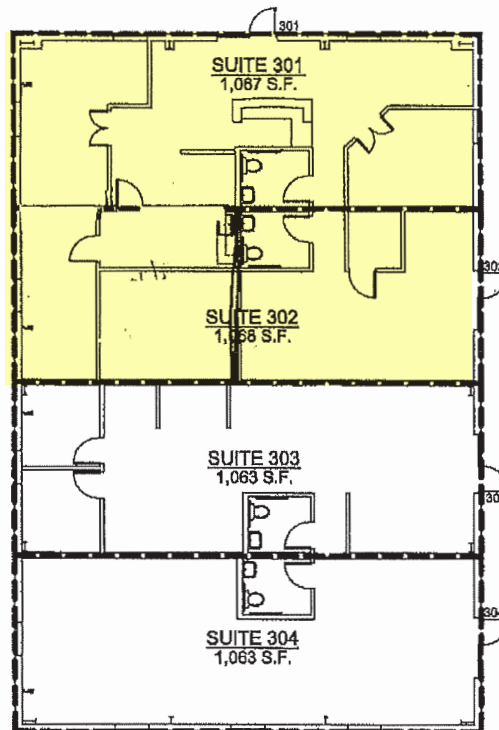
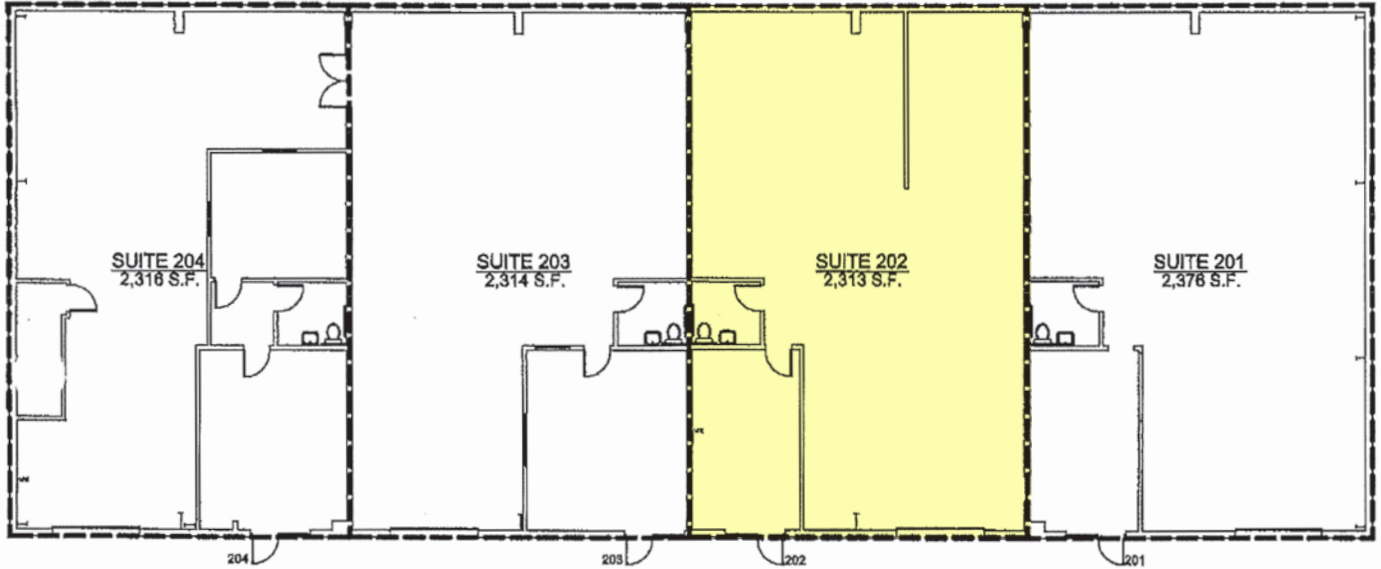
900 SW 5th Avenue • 17th Floor • Portland, OR 97204  
503.223.3171 • norris-stevens.com

# SHERWOOD INDUSTRIAL PARK

20746 SW Olds Place | Sherwood, OR 97140

## FOR LEASE

### FLOOR PLANS



For More Information or a Property Tour, Please Contact:

**NICK CHESSAR**  
503.225.8469  
NickC@norris-stevens.com

**SCOTT FINNEY, SIOR**  
503.225.8431  
ScottF@norris-stevens.com

## Norris & Stevens

INVESTMENT REAL ESTATE SERVICES



Information contained herein has been obtained from others and considered to be reliable; however, a prospective purchaser or lessee is expected to verify all information to his/her own satisfaction.

900 SW 5th Avenue • 17th Floor • Portland, OR 97204  
503.223.3171 • norris-stevens.com