

SW 9TH & ALDER OFFICE/RETAIL BLDG

606 SW 9th Avenue | Portland OR 97205

FOR LEASE



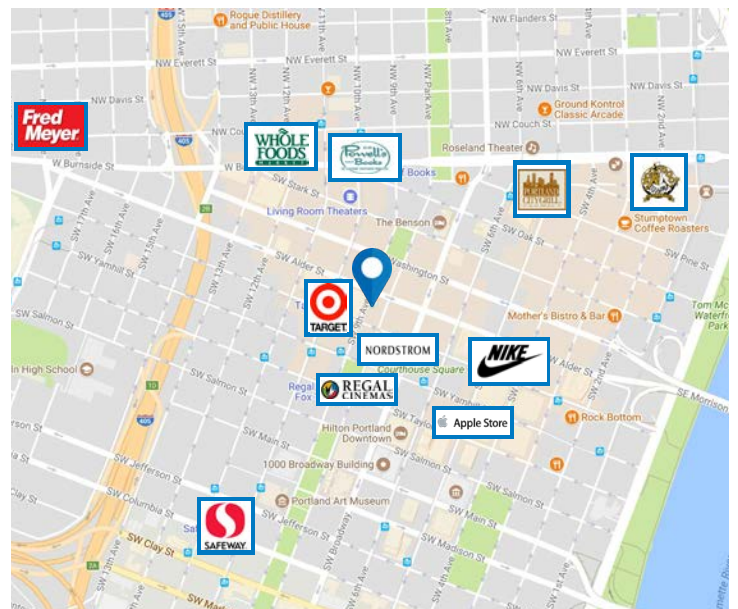
MULTI-LEVEL OFFICE/RETAIL SPACE FOR LEASE

DETAILS

- Please call for rates
- Rentable area: \pm 6,418 SF demisable to \pm 2,713 SF

FEATURES

- Prime retail or creative office opportunity
- Building is anchored by Rich's Cigar Shop
- Adjacent to Target and Downtown's largest food cart pod, and close to Nordstrom and Pioneer Place Mall
- Ample monthly parking available nearby
- Access to I-405 and Trimet MAX, streetcar, and buses



11.12.2021

For more information or a property tour, please contact:

TIM PFEIFFER

503.225.8455

TimP@norris-stevens.com

LUIS MARTIN DEL CAMPO

503.416.8422

LuisM@norris-stevens.com

Norris & Stevens

INVESTMENT REAL ESTATE SERVICES



Information contained herein has been obtained from others and considered to be reliable; however, a prospective purchaser or lessee is expected to verify all information to his/her own satisfaction.

900 SW 5th Avenue • 17th Floor • Portland, OR 97204
503.223.3171 • norris-stevens.com

SW 9TH & ALDER OFFICE/RETAIL BLDG

606 SW 9th Avenue | Portland OR 97205

FOR LEASE

PROPERTY PHOTOS



For more information or a property tour, please contact:

TIM PFEIFFER

503.225.8455

TimP@norris-stevens.com

LUIS MARTIN DEL CAMPO

503.416.8422

LuisM@norris-stevens.com

Norris & Stevens

INVESTMENT REAL ESTATE SERVICES



Information contained herein has been obtained from others and considered to be reliable; however, a prospective purchaser or lessee is expected to verify all information to his/her own satisfaction.

900 SW 5th Avenue • 17th Floor • Portland, OR 97204
503.223.3171 • norris-stevens.com

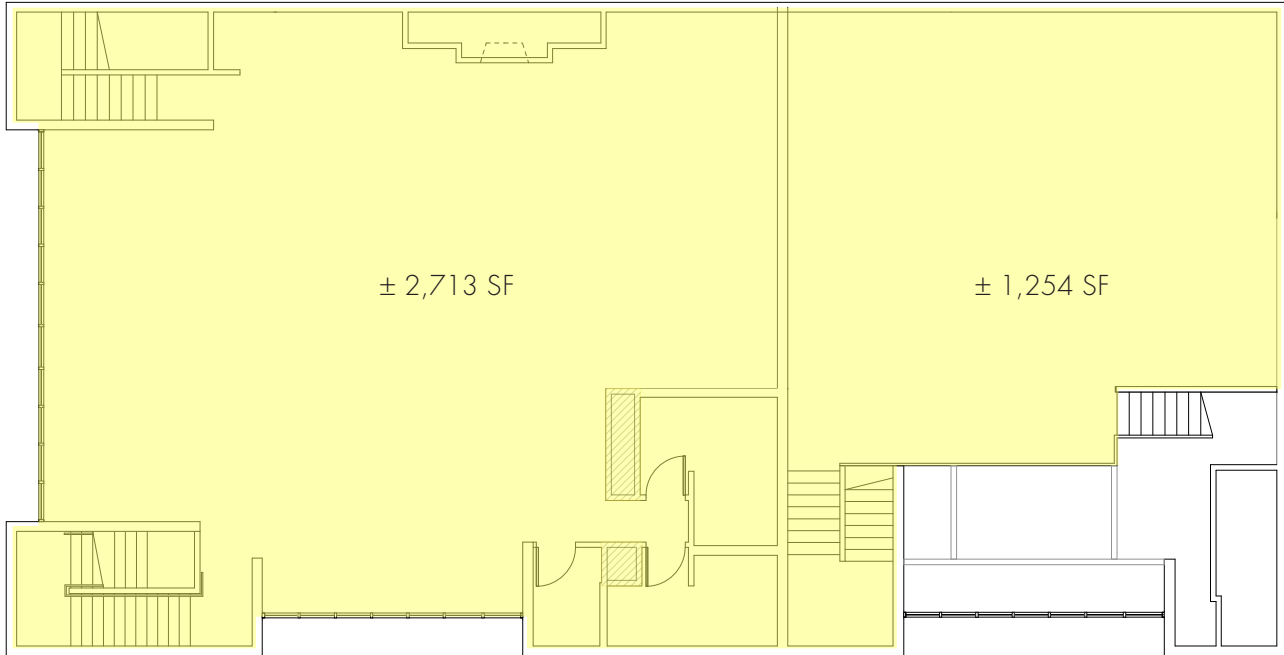
SW 9TH & ALDER OFFICE/RETAIL BLDG

606 SW 9th Avenue | Portland OR 97205

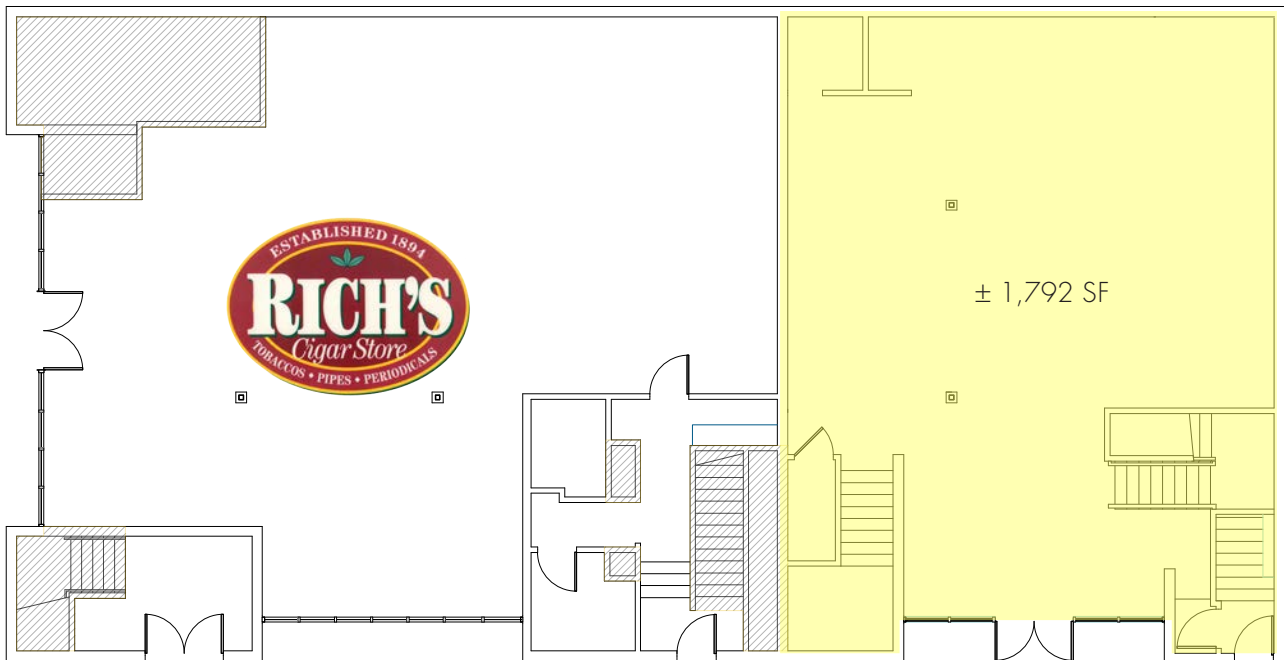
FOR LEASE

FLOOR PLANS

SECOND FLOOR PLAN



GROUND FLOOR PLAN



For more information or a property tour, please contact:

TIM PFEIFFER

503.225.8455

TimP@norris-stevens.com

LUIS MARTIN DEL CAMPO

503.416.8422

LuisM@norris-stevens.com

Norris & Stevens

INVESTMENT REAL ESTATE SERVICES



Information contained herein has been obtained from others and considered to be reliable; however, a prospective purchaser or lessee is expected to verify all information to his/her own satisfaction.

900 SW 5th Avenue • 17th Floor • Portland, OR 97204
503.223.3171 • norris-stevens.com