

COLUMBIA PACIFIC PLAZA

2201 - 2207 NE Columbia Boulevard | Portland OR 97211

FOR LEASE



FLEXIBLE OFFICE SPACE FOR LEASE

DETAILS

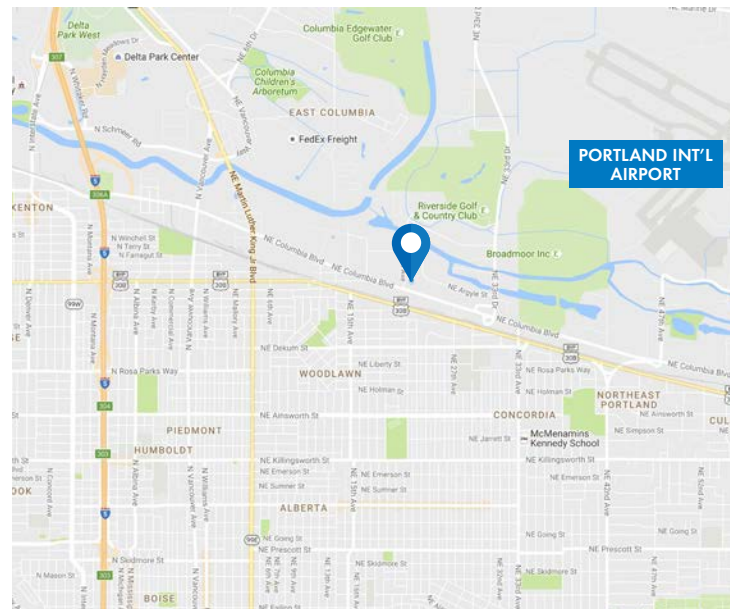
Lease Rate: starting at \$0.50 psf + NNN

East Building Rentable Area: Up to ± 16,935 SF

West Building Rentable Area: Up to ± 8,081 SF

FEATURES

- Located in General Industrial Zone
- Great Office or Mixed-Use Possibilities
- Ample On-Site Parking
- High Visibility
- Easy Access to Portland
- New Tenant Deals



04.08.2021

For more information or a property tour, please contact:

TIM BUDELMAN

503.225.8472

TimB@norris-stevens.com

GABE SCHNITZER

503.225.8443

GabeS@norris-stevens.com

Norris & Stevens

INVESTMENT REAL ESTATE SERVICES



Information contained herein has been obtained from others and considered to be reliable; however, a prospective purchaser or lessee is expected to verify all information to his/her own satisfaction.

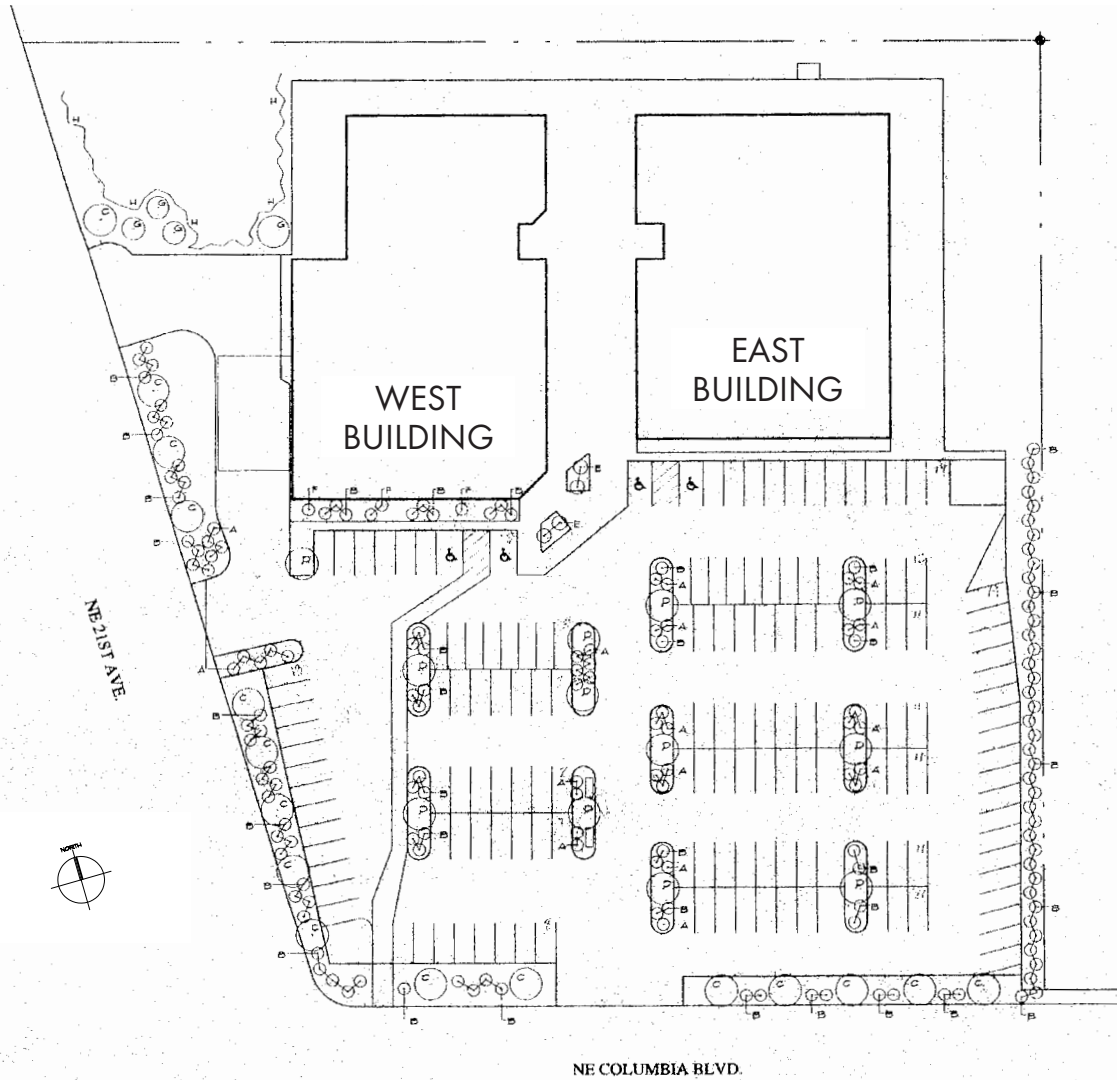
900 SW 5th Avenue • 17th Floor • Portland, OR 97204
503.223.3171 • norris-stevens.com

COLUMBIA PACIFIC PLAZA

2201 - 2207 NE Columbia Boulevard | Portland OR 97211

FOR LEASE

PROPERTY PHOTOS & FLOOR PLANS



For more information or a property tour, please contact:

TIM BUDELMAN
503.225.8472
TimB@norris-stevens.com

GABE SCHNITZER
503.225.8443
GabeS@norris-stevens.com

Norris & Stevens

INVESTMENT REAL ESTATE SERVICES



Information contained herein has been obtained from others and considered to be reliable; however, a prospective purchaser or lessee is expected to verify all information to his/her own satisfaction.

900 SW 5th Avenue • 17th Floor • Portland, OR 97204
503.223.3171 • norris-stevens.com

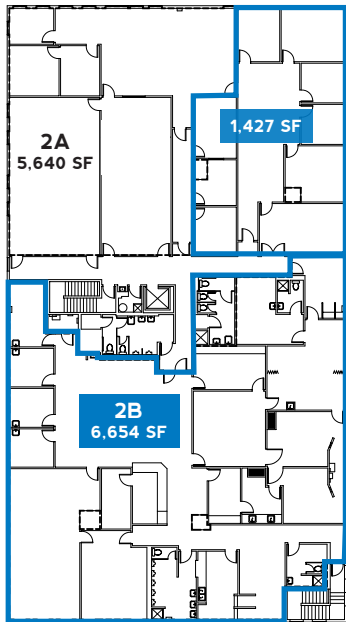
COLUMBIA PACIFIC PLAZA

2201 - 2207 NE Columbia Boulevard | Portland OR 97211

FOR LEASE

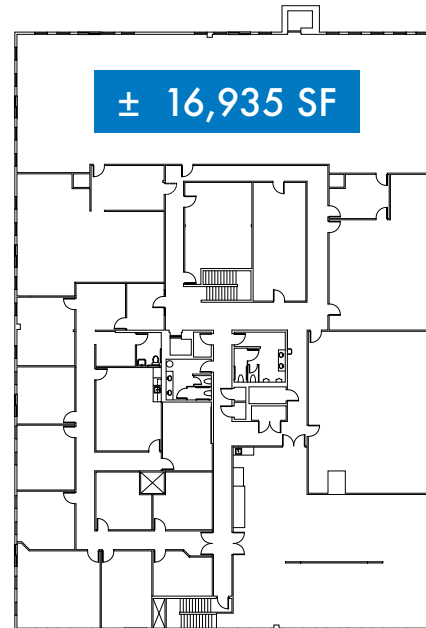
PROPERTY PHOTOS & FLOOR PLANS

West Building Photos



West Building Plans

SECOND FLOOR PLAN



East Building Plans

SECOND FLOOR PLAN



For more information or a property tour, please contact:

TIM BUDELMAN
503.225.8472
TimB@norris-stevens.com

GABE SCHNITZER
503.225.8443
GabeS@norris-stevens.com

Norris & Stevens

INVESTMENT REAL ESTATE SERVICES



Information contained herein has been obtained from others and considered to be reliable; however, a prospective purchaser or lessee is expected to verify all information to his/her own satisfaction.

900 SW 5th Avenue • 17th Floor • Portland, OR 97204
503.223.3171 • norris-stevens.com