

735 E CLARENDON ST

Gladstone, OR 97027

FOR LEASE



NEW OFFICE SPACE AVAILABLE FOR LEASE

DETAILS

- Lease Rate: \$28.75 PSF, MG
- Available Space: ± 1,427 SF – Second Floor

FEATURES

- Perfect for medical or general office tenants
- Great proximity to multiple food options
- Minutes away from the Oregon City Shopping Center
- Easy access to I-205



02.19.2024

For more information or a property tour, please contact:

TIM PFEIFFER

503.225.8455

TimP@norris-stevens.com

Norris & Stevens

INVESTMENT REAL ESTATE SERVICES

900 SW 5th Avenue • 17th Floor • Portland, OR 97204
503.223.3171 • norris-stevens.com



Information contained herein has been obtained from others and considered to be reliable; however, a prospective purchaser or lessee is expected to verify all information to their own satisfaction.

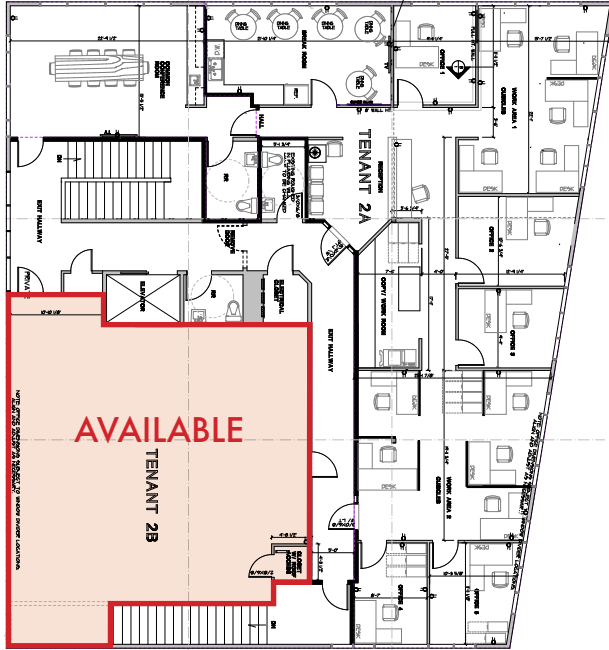
735 E CLARENDON ST

Gladstone, OR 97027

FOR LEASE

FLOOR PLANS & PHOTOS

SECOND FLOOR



For more information or a property tour, please contact:

TIM PFEIFFER

503.225.8455

TimP@norris-stevens.com

Norris & Stevens

INVESTMENT REAL ESTATE SERVICES



Information contained herein has been obtained from others and considered to be reliable; however, a prospective purchaser or lessee is expected to verify all information to their own satisfaction.

900 SW 5th Avenue • 17th Floor • Portland, OR 97204
503.223.3171 • norris-stevens.com