

# BURNSIDE TROLLEY BUILDING

2705 E Burnside Street | Portland OR 97214

## FOR LEASE



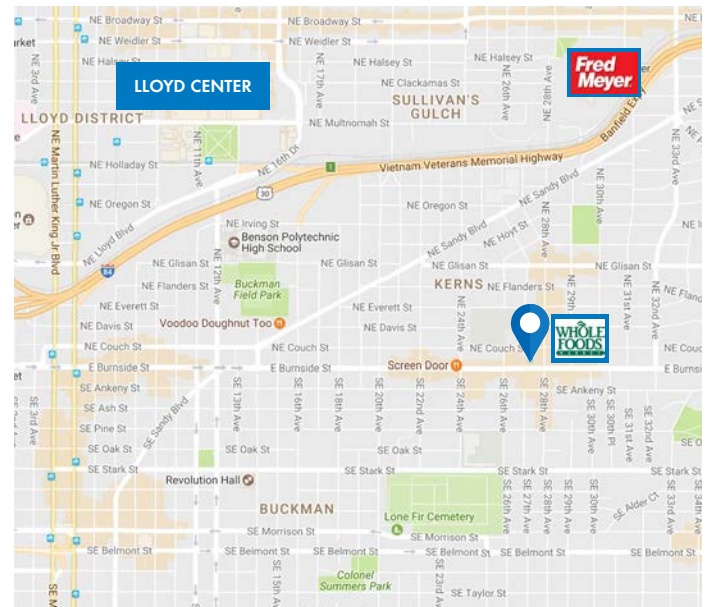
## OFFICE SPACE AVAILABLE FOR LEASE

### DETAILS

- Lease Rate: \$995 per month
- Suite 110: ± 427 SF

### FEATURES

- Classic brick exterior
- Built out for counseling/therapy
- 2 level building, elevator served
- On-site parking with 1/1,000 ratio
- Signage available
- Along E Burnside St. next to Starbucks, Whole Foods
- Popular NE 28th/Burnside area
- Rare office suites close-in



09.07.2022

For more information or a property tour, please contact:

**DUANE LINK**  
503.225.8465  
Duanel@norris-stevens.com

**DOUG CARTER**  
503.225.8499  
DougC@norris-stevens.com

## Norris & Stevens

INVESTMENT REAL ESTATE SERVICES



*Information contained herein has been obtained from others and considered to be reliable; however, a prospective purchaser or lessee is expected to verify all information to his/her own satisfaction.*

900 SW 5th Avenue • 17th Floor • Portland, OR 97204  
503.223.3171 • norris-stevens.com

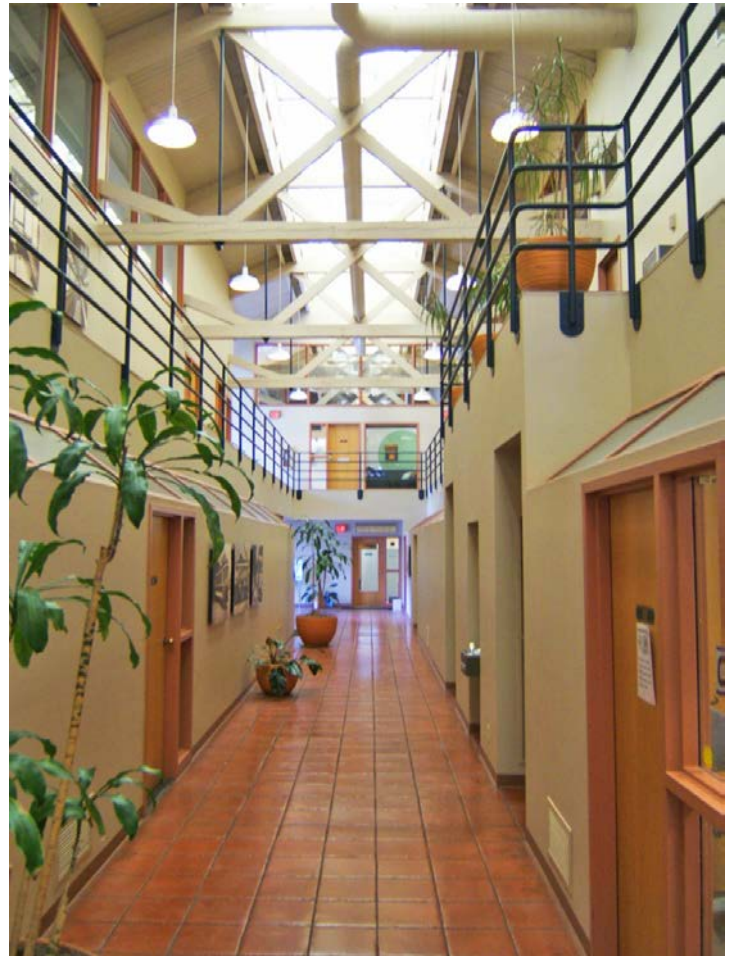
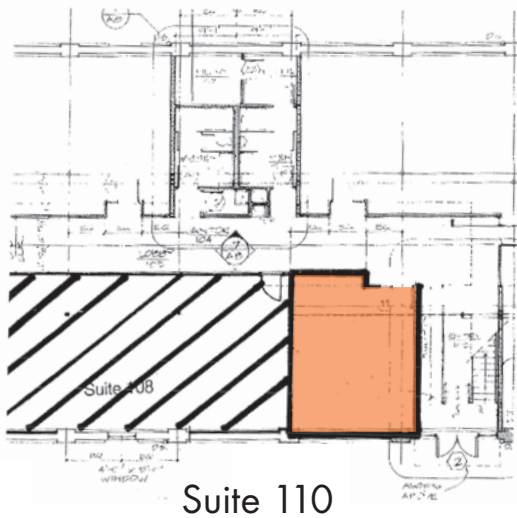


# BURNSIDE TROLLEY BUILDING

2705 E Burnside Street | Portland OR 97214

# FOR LEASE

PLANS / PHOTOS



For more information or a property tour, please contact:

**DUANE LINK**  
503.225.8465  
Duanel@norris-stevens.com

**DOUG CARTER**  
503.225.8499  
DougC@norris-stevens.com

## Norris & Stevens

INVESTMENT REAL ESTATE SERVICES



Information contained herein has been obtained from others and considered to be reliable; however, a prospective purchaser or lessee is expected to verify all information to his/her own satisfaction.

900 SW 5th Avenue • 17th Floor • Portland, OR 97204  
503.223.3171 • norris-stevens.com