

FOR LEASE

731 SW Morrison St., Portland, OR 97205

Free Standing Retail Building

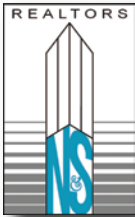
Please visit norris-stevens.com to view more available properties.



- | | | |
|------------------------------|-------------------------------|--|
| 1 SITE | 7 Williams & Sonoma | 13 Nordstrom |
| 2 Abercrombie & Fitch | 8 Pioneer Place I & II | 14 Park Avenue West Tower
Fall of 2009 |
| 3 Jeri Rice | 9 St. John's Knits | 15 Columbia Sportswear |
| 4 Sunglass Hut | 10 Jessica McClintock | 16 Brooks Brothers |
| 5 Doc Martens | 11 Mario's | 17 Parking Garage |
| 6 Macy's | 12 Banana Republic | 18 Mercantile |

This attractive free standing retail building is located in the heart of Downtown Portland, within blocks of hotels, national/regional retailers, and on the MAX Light Rail line. Excellent parking is available.

Full Exterior Renovation Planned

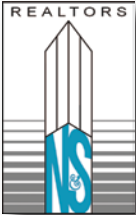


Norris & Stevens

621 SW Morrison St., Ste. 800
Portland, OR 97205
503.223.3171 - Ph. / 503.228.2136 - Fx.
www.norris-stevens.com

For More Information or a Property Tour, Please Contact:

Dean Wier
deanw@norris-stevens.com



Norris & Stevens

621 SW Morrison St., Ste. 800
Portland, OR 97205
503.223.3171 - Ph. / 503.228.2136 - Fx.
www.norris-stevens.com

For More Information or a Property Tour, Please Contact:

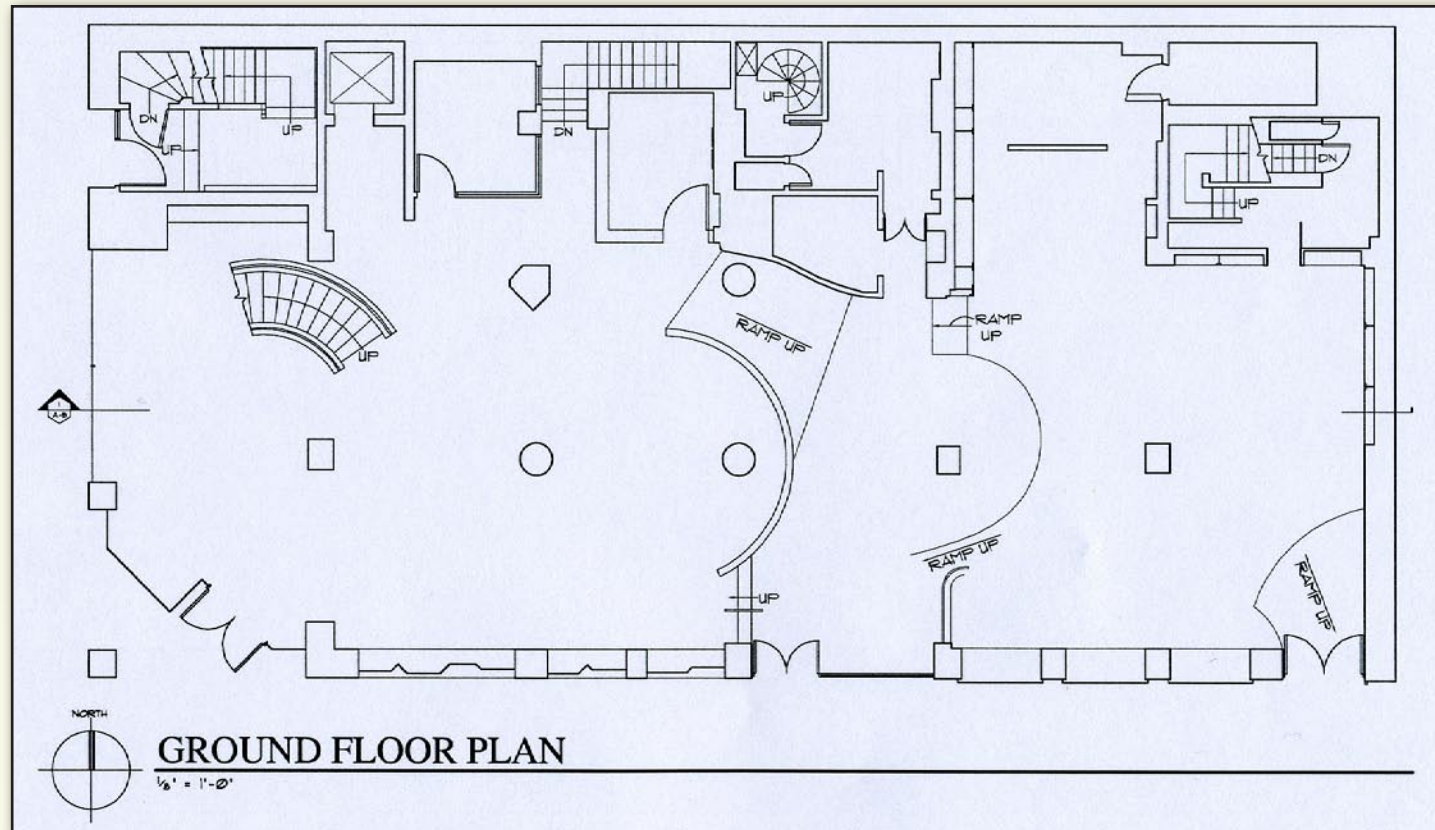
Dean Wier
deanw@norris-stevens.com

Information contained herein has been obtained from others and considered to be reliable; however, a prospective purchaser or lessee is expected to verify all information to his/her own satisfaction.



Free Standing Retail Building

Floor Plan



PROPERTY FACTS

- **SPACE DETAILS:**
 - ± 11,000 SF of Showroom on two floors
 - ± 5,000 SF of basement space
 - Elevator served
 - 17' ceiling height on 1st floor
 - 12' ceiling height on 2nd floor
- **ADJACENT HOTELS:**
 - Paramount
 - Heathman
 - Westin
 - Marriott
 - Hilton
- **OVER 2,000 PARKING STALLS WITHIN 2 BLOCKS**
- **1 BLOCK TO PIONEER COURTHOUSE SQUARE**
 - Known as "Portland's Living Room"
 - 300 events annually
 - 2.5 million visitors annually
- **LOCATED ON MAX LIGHT RAIL LINE**
 - Over 28,000 riders at intersection per day
- **DAYTIME DEMOGRAPHICS**
 - Over 84,000 employees in the CBD
- **OREGON IS A SALES TAX FREE STATE**

Adjacent Retailers

