

FOR LEASE

Whitaker Way Industrial Park



- All Spaces are 20' Clear Height & Sprinklered
- Great Access to PDX Airport, I-84, & I-205
- Ample Parking

13010 Suite A NE David Circle- BLDG. #2

- ± 5,482 SF Shell
- ± 637 SF Office
- 1 Grade Doors & 2 Dock Doors
- End Cap - Great Visibility
- \$0.40/\$0.70 NNN

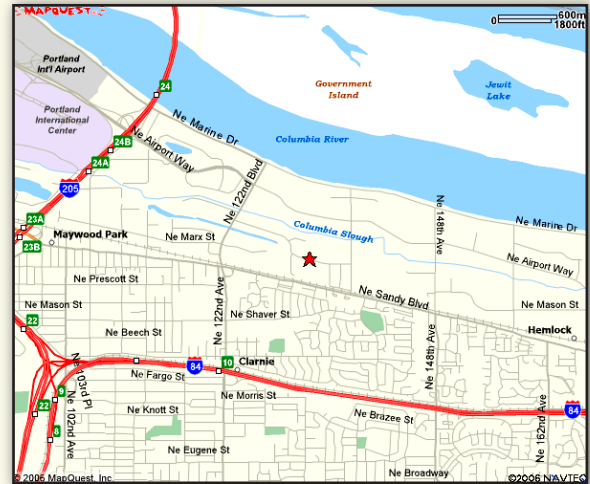
12937 NE David Circle - BLDG. #5

- ± 8,750 SF Shell
- ± 1,448 SF Office
- 1 Dock Door, 1 Grade Door, 3 Van Height
- \$0.40/\$0.70 NNN

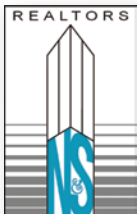
13331 NE Whitaker Way - BLDG. #7*

- ± 4,800 SF Shell
- ± 1,660 SF Office
- 2 Grade Level Doors
- \$0.40/\$0.70 NNN
- ±3,143 SOffice/Flex
- \$0.90 NNN

* Up to 23 vehicle parking stalls available



*Up to 23 Parking Stalls Available



Norris & Stevens

621 SW Morrison St., Ste. 800
Portland, OR 97205
503.223.3171 - Ph. / 503.228.2136 - Fx.
www.norris-stevens.com

For More Information or a Property Tour, Please Contact:

Mike Woodley
mikew@norris-stevens.com

Linda Craig
lindac@norris-stevens.com

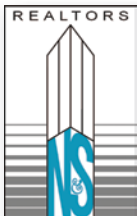
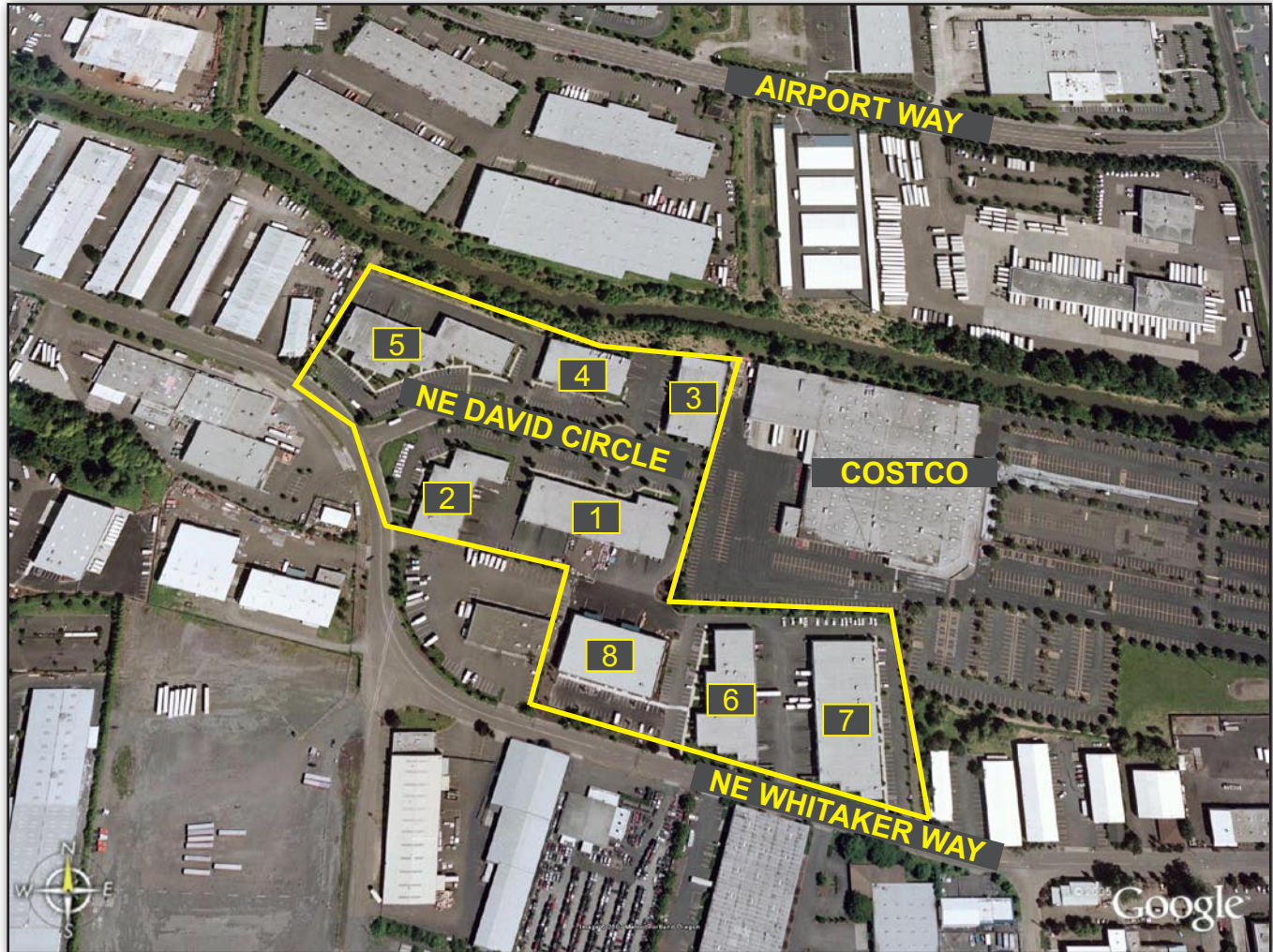
Matt Lyman
mattl@norris-stevens.com

Information contained herein has been obtained from others and considered to be reliable; however, a prospective purchaser or lessee is expected to verify all information to his/her own satisfaction.

TCN
WORLDWIDE

FOR LEASE

Whitaker Way Industrial Park



Norris & Stevens

621 SW Morrison St., Ste. 800
Portland, OR 97205
503.223.3171 - Ph. / 503.228.2136 - Fx.
www.norris-stevens.com

For More Information or a Property Tour, Please Contact:

Mike Woodley
mikew@norris-stevens.com

Linda Craig
lindac@norris-stevens.com

Matt Lyman
mattl@norris-stevens.com

Information contained herein has been obtained from others and considered to be reliable; however, a prospective purchaser or lessee is expected to verify all information to his/her own satisfaction.

