

LEASE

Lease Rate

\$26.00 / SF / MG

Availabilities

Suite	SF
105	± 4,238*

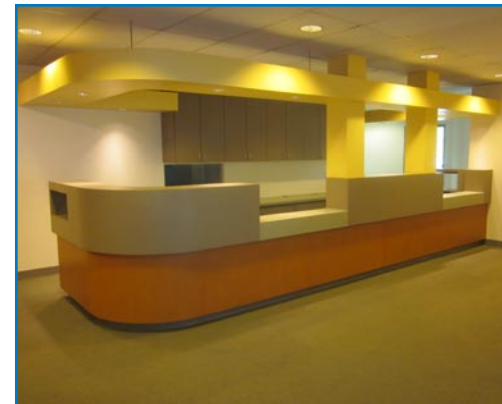
*owner will consider dividing space with ± 2,500 SF use and 5-year term

Features

- Suite Designed for Medical Use
- Move-in Ready
- Underground Parking
- ADA Access
- Across from Legacy / Good Samaritan Hospital
- Streetcar Stops at Corner



DIVISIBLE

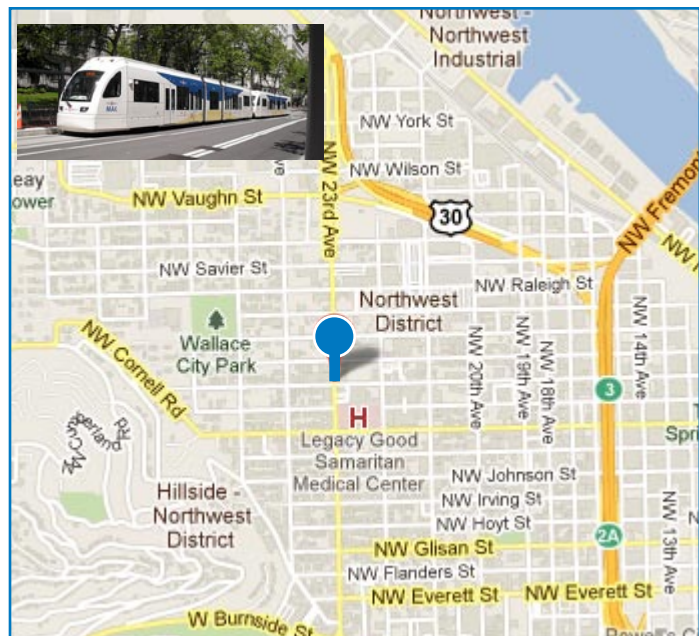


For More Information or to Schedule a Property Tour, Please Contact:

Richard Jennings

503.225.8441

richardj@norris-stevens.com





Norris & Stevens Inc.

621 SW Morrison Street
Suite 800
Portland, OR 97205
503.223.3171 - P
norris-stevens.com

NORTHROP MEDICAL BUILDING

2311 NW Northrup Street | Portland, OR 97210

Lease Rate

\$26.00 / SF / MG

Availabilities

Suite	SF
105	± 4,238

Features

- Suite Designed for Medical Use
- Move-in Ready
- Underground Parking
- ADA Access
- Across from Legacy / Good Samaritan Hospital
- Streetcar Stops at Corner

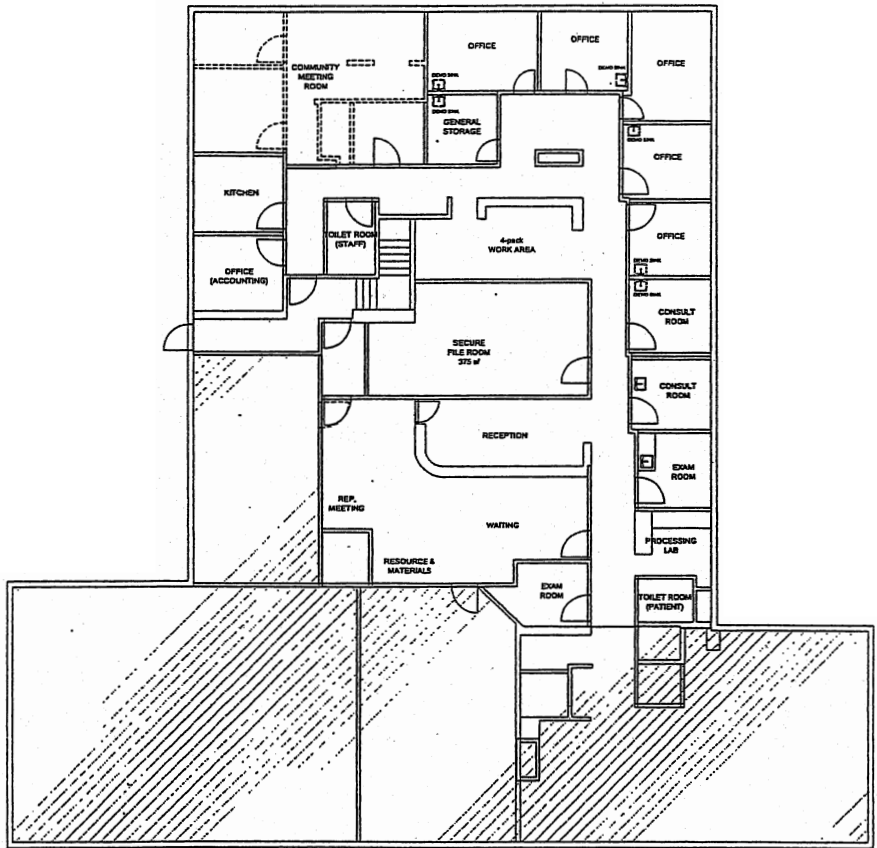
For More Information or to
Schedule a Property Tour,
Please Contact:

Richard Jennings

503.225.8441

richardj@norris-stevens.com

± 4,328 RSF



Information contained herein has been obtained from others
and considered to be reliable; however, a prospective purchaser
or lessee is expected to verify all information to his/her own
satisfaction.