

MARTIN BUILDING

LEASE



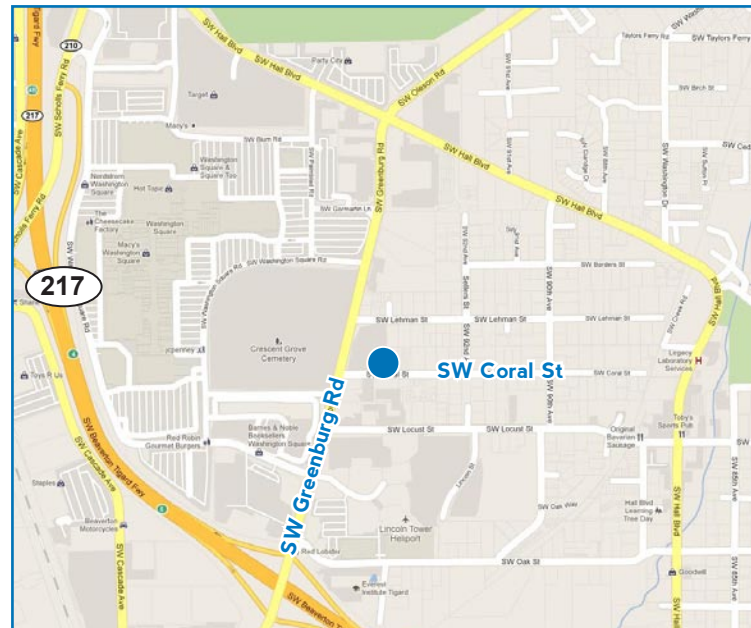
9450 SW Coral Street | Tigard, OR 97223

AVAILABLE

SUITE	SIZE	RATE
203	±1,520 SF	\$19.00/SF/FSG

FEATURES

- Class A Finishes Throughout
- Close Proximity to Hotels, Restaurants & Banking
- Parking: 4.0/1,000
- Easy Access to Hwy 217 via Greenburg Road
- Professionally Managed
- Motivated Owner



Norris & Stevens
Inc.

621 SW Morrison Street, Suite 800
Portland, OR 97205
503.223.3171 - Ph. | 503.228.2136 - Fx.
www.norris-stevens.com

For More Information or a Property Tour, Please Contact:

Duane Link
503.225.8465
duanel@norris-stevens.com

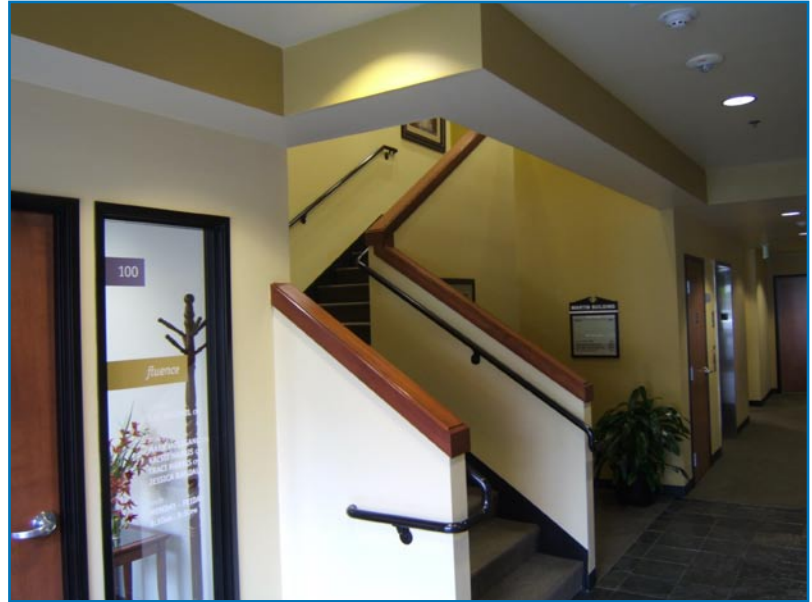
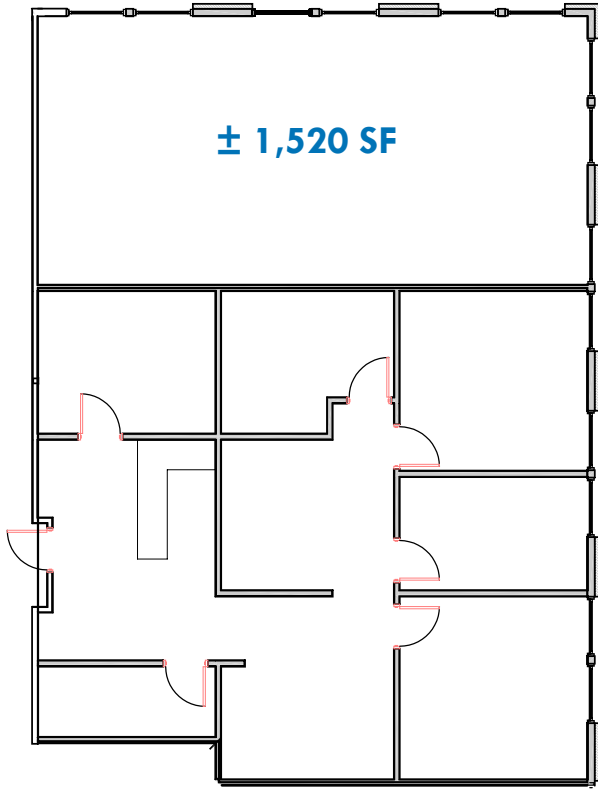
Information contained herein has been obtained from others and considered to be reliable; however, a prospective purchaser or lessee is expected to verify all information to his/her own satisfaction.



MARTIN BUILDING

LEASE

9450 SW Coral Street | Tigard, OR 97223



Norris & Stevens Inc.

621 SW Morrison Street, Suite 800
Portland, OR 97205
503.223.3171 - Ph. | 503.228.2136 - Fx.
www.norris-stevens.com

For More Information or a Property Tour, Please Contact:

Duane Link

503.225.8465

duanel@norris-stevens.com

Information contained herein has been obtained from others and considered to be reliable; however, a prospective purchaser or lessee is expected to verify all information to his/her own satisfaction.

TCN
WORLDWIDE