



# Norris & Stevens Inc.

621 SW Morrison Street  
Suite 800  
Portland, OR 97205  
503.223.3171 - P  
norris-stevens.com

# ELM STREET COMMERCE CENTER

2807-2847 SE 75th Avenue | Hillsboro, OR 97123

**LEASE**

## Features

- Competitive Introductory Rates
- New Construction
- Variety of Configurations
- Terrific Hillsboro Location (walking distance to restaurants, coffee, and shops)
- Ample Parking

## Lease Rate

- \$9.00/SF Gross



For More Information or to Schedule a Property Tour, Please Contact:

### Andrew Bean

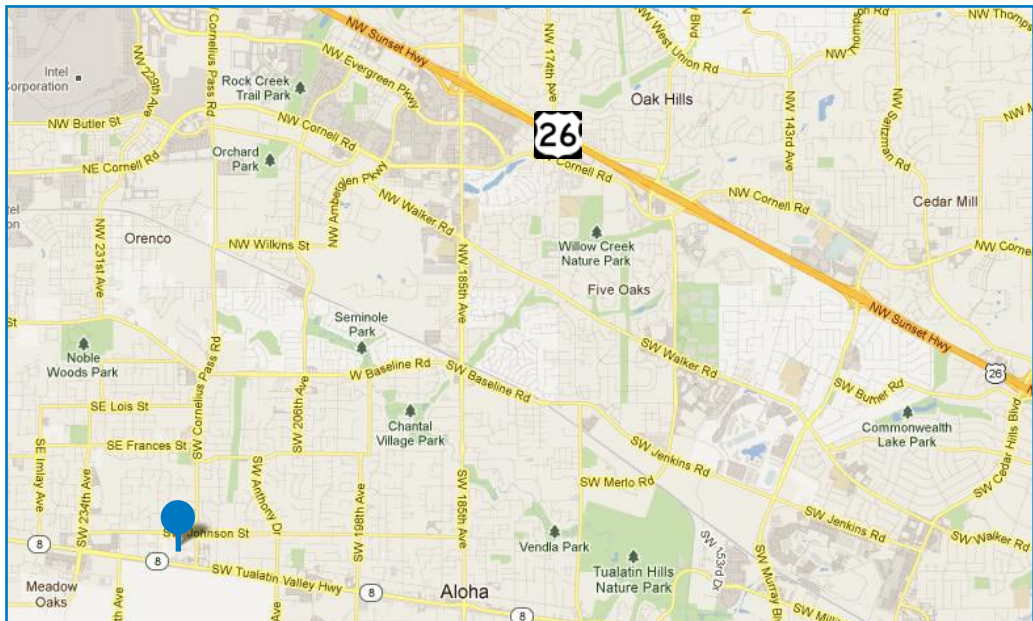
503.225.8443

andrewb@norris-stevens.com

### Tim Budelman

503.225.8472

timb@norris-stevens.com



Information contained herein has been obtained from others and considered to be reliable; however, a prospective purchaser or lessee is expected to verify all information to his/her own satisfaction.



# Norris & Stevens Inc.

621 SW Morrison Street  
Suite 800  
Portland, OR 97205  
503.223.3171 - P  
norris-stevens.com

# ELM STREET COMMERCE CENTER

2807-2847 SE 75th Avenue | Hillsboro, OR 97123

## Availabilities

### BUILDING A

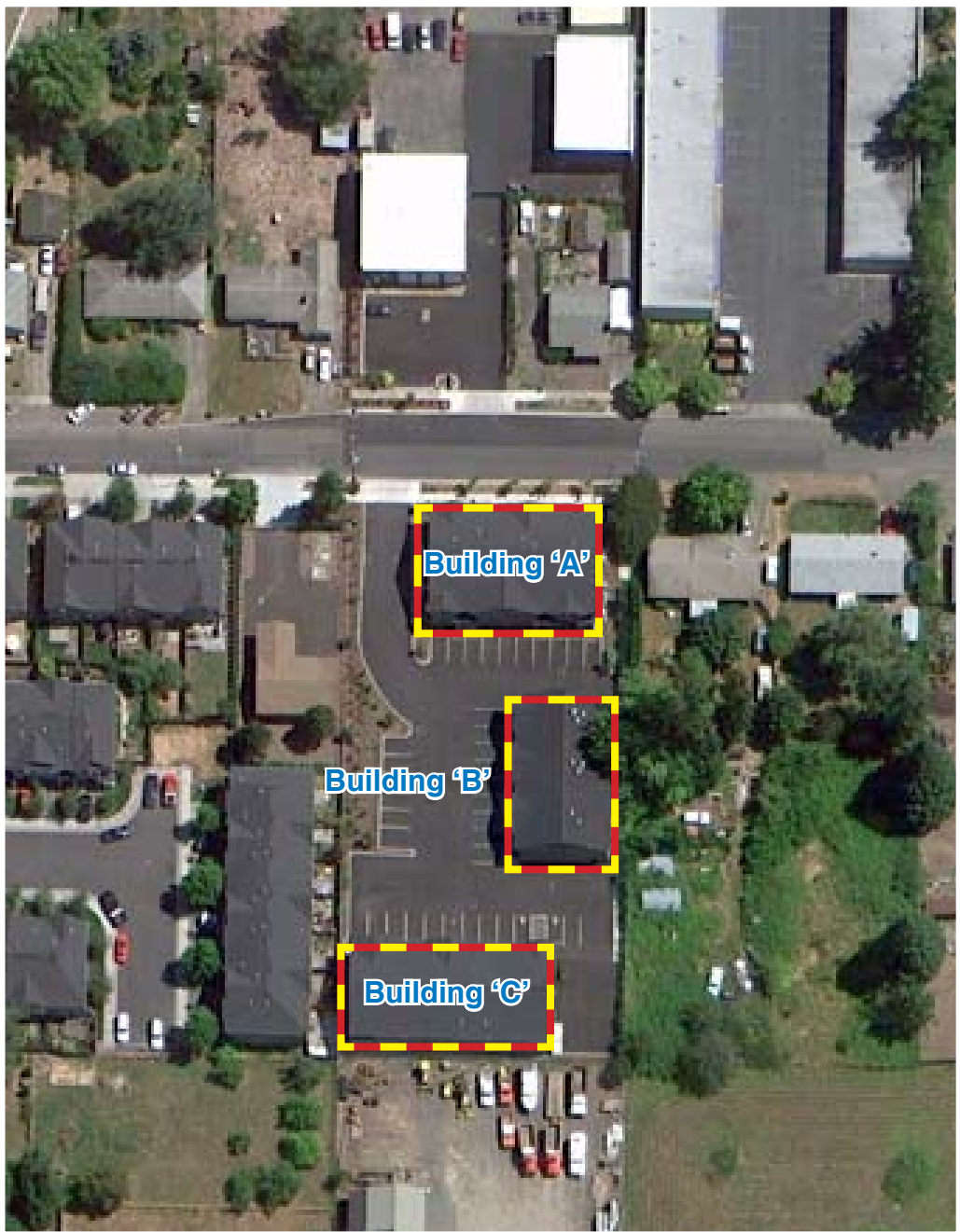
UNIT	SF ±
A-1	Office: ± 2,954 SF Warehouse: ± 640 SF
A-2	Office: ± 2,730 SF Warehouse: ± 370 SF

### BUILDING B

UNIT	SF ±
B-1	Office: ± 920 SF Warehouse: ± 1,125 SF
B-2	Office: ± 920 SF Warehouse: ± 1,125 SF
B-3	Office: ± 920 SF Warehouse: ± 1,125 SF

### BUILDING C

UNIT	SF ±
C-1	Office: ± 380 SF Warehouse: ± 1,620 SF
C-2	Office: ± 3,000 SF Warehouse: ± 1,600 SF



## Lease Rate

• \$9.00/SF Gross

For More Information or to  
Schedule a Property Tour,  
Please Contact:

**Andrew Bean**  
503.225.8443  
andrewb@norris-stevens.com

**Tim Budelman**  
503.225.8472  
timb@norris-stevens.com



*Information contained herein has been obtained from others and considered to be reliable; however, a prospective purchaser or lessee is expected to verify all information to his/her own satisfaction.*