

# FOR LEASE

8095 SE Deer Creek Lane, Milwaukie, OR

## I-205 Corridor Retail/Service/Industrial



### ■ LOCATION

- Excellent access to I-205, Hwy 224, Clackamas Town Center

### ■ FEATURES

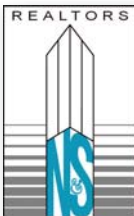
- 22' ceiling clear height
- 2 grade level loading doors
- Sprinklered

### ■ SIZE

- ± 7,219 SF shell
- ± 800 SF office

### ■ LEASE RATE

- \$.40 PSF monthly NNN
- \$.70 PSF office surcharge



**Norris &  
Stevens**

621 SW Morrison St., Ste. 800  
Portland, OR 97205  
503.223.3171 - Ph. / 503.228.2136 - Fx.  
[www.norris-stevens.com](http://www.norris-stevens.com)

For More Information or a Property Tour, Please Contact:

**Greg Nesting**  
[gregn@norris-stevens.com](mailto:gregn@norris-stevens.com)

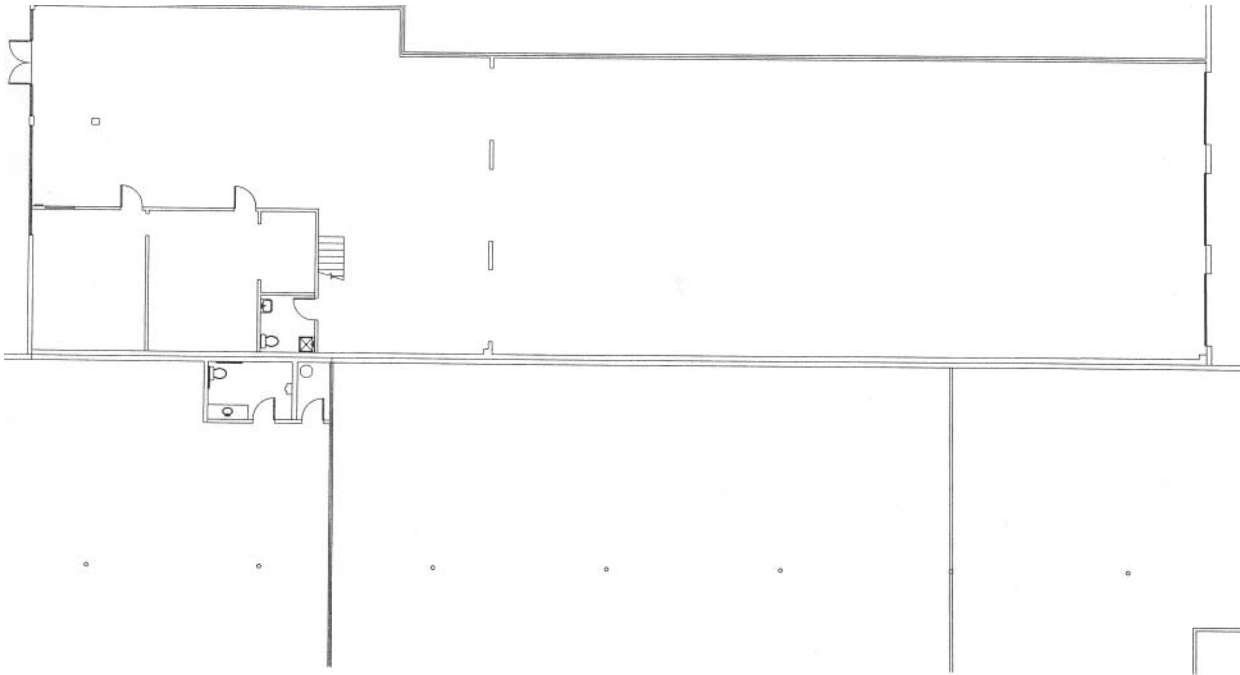
**Aaron Watt**  
[aaronw@norris-stevens.com](mailto:aaronw@norris-stevens.com)

**Anhtuan Huynh**  
[anhtuanh@norris-stevens.com](mailto:anhtuanh@norris-stevens.com)

Information contained herein has been obtained from others and considered to be reliable; however, a prospective purchaser or lessee is expected to verify all information to his/her own satisfaction.

**TCN**  
WORLDWIDE

8095 SE Deer Creek Lane, Milwaukie, OR



**FLOOR PLAN**  
NOT TO SCALE

**DEER CREEK BUSINESS PARK**  
MILWAUKIE, OREGON