

# John's Landing Office Space

5901 SW Macadam Avenue | Portland, OR 97239



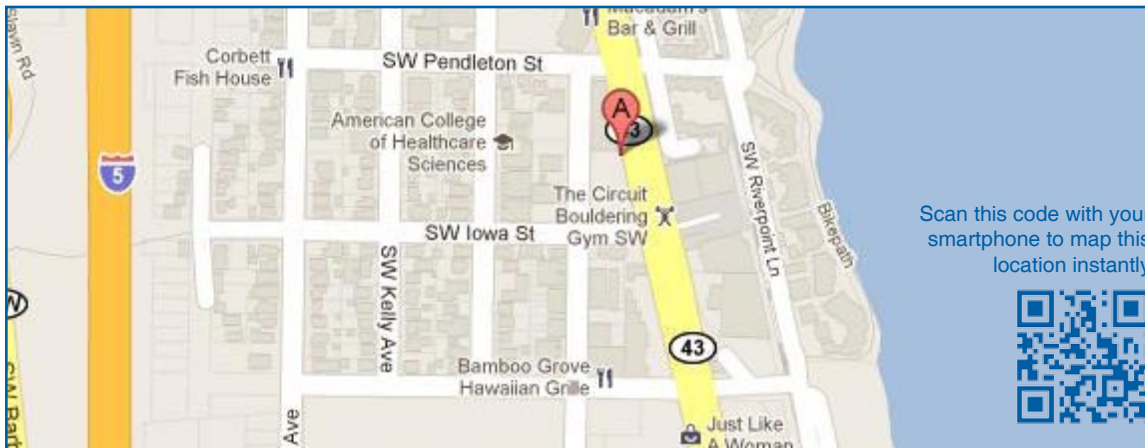
## BP John Building

### AVAILABILITIES

| Suite | SF (±) | Rate           |
|-------|--------|----------------|
| 110   | 1,295  | \$20.00/SF/FSG |

### FEATURES

- Excellent John's Landing location, minutes from downtown
- Easy freeway access
- Free on-site parking
- Walk to commercial amenities
- Move-in ready



Scan this code with your smartphone to map this location instantly



Information contained herein has been obtained from others and considered to be reliable; however, a prospective purchaser or lessee is expected to verify all information to his/her own satisfaction.

# FOR LEASE

**Richard Jennings**

503.225.8441

RichardJ@norris-stevens.com



Scan this code with your smartphone to save broker information

# Norris & Stevens Inc.



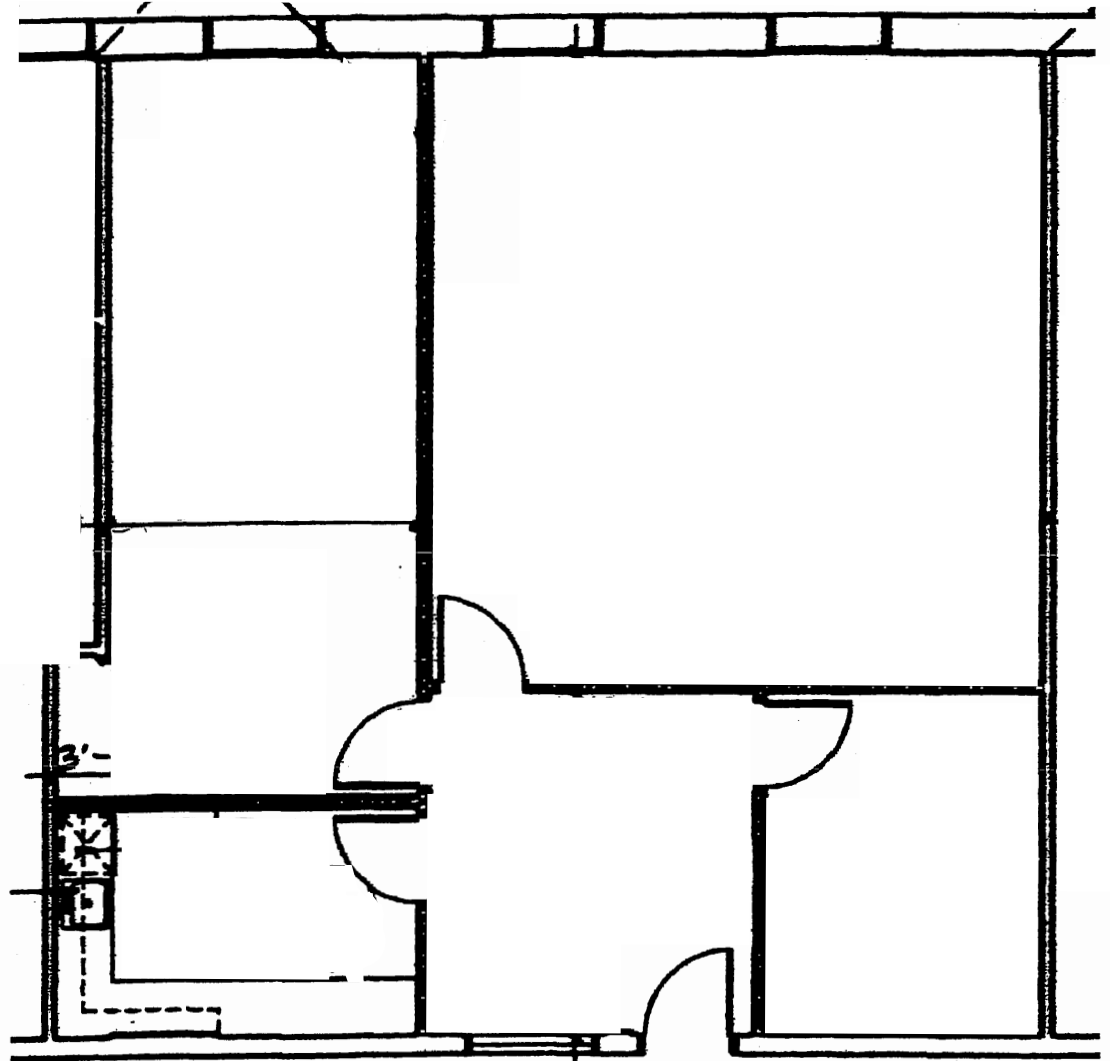
621 SW Morrison Street  
Suite 800  
Portland, OR 97205  
503.223.3171 - Ph  
503.228.2136 - Fx  
norris-stevens.com

**TCN**  
WORLDWIDE

**FOR  
LEASE**

# John's Landing Office Space

5901 SW Macadam Avenue | Portland, OR 97239



Suite 110  
± 1,295 SF

**Richard Jennings**  
503.225.8441  
RichardJ@norris-stevens.com



Scan this code with  
your smartphone  
to save broker  
information

**Norris &  
Stevens**  
Inc.

621 SW Morrison Street  
Suite 800  
Portland, OR 97205  
503.223.3171 - Ph  
503.228.2136 - Fx  
norris-stevens.com



**TCN**  
WORLDWIDE