

FOR LEASE

2669 NE Riverside Way, Portland, OR 97211

Heintz Industrial Park

Please visit norris-stevens.com



■ AVAILABLE

- ± 19,200 SF shell
- ± 2,000 SF office
- ± 9,750 SF fenced yard

■ LOCATION

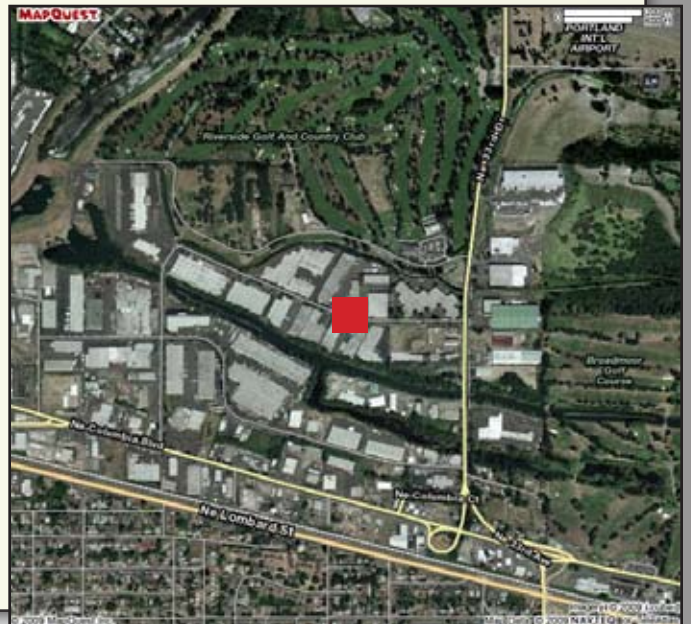
- Columbia Corridor
- Between I-5 & I-205

■ FEATURES

- 22' clear height
- Fully sprinklered
- Off-street parking
- 2 dock loading doors
- 2 grade level loading doors

■ RATE

- \$.36 Shell PSF NNN
- \$.70 PSF office surcharge
- \$.07 PSF for Yard



Norris & Stevens

621 SW Morrison St., Ste. 800
Portland, OR 97205
503.223.3171 - Ph. / 503.228.2136 - Fx.
www.norris-stevens.com

For More Information or a Property Tour, Please Contact:

Greg Nesting
gregn@norris-stevens.com

Information contained herein has been obtained from others and considered to be reliable; however, a prospective purchaser or lessee is expected to verify all information to his/her own satisfaction.

TCN
WORLDWIDE