

SERVICE/INDUSTRIAL FOR LEASE

Central Eastside Business Center



2508 - 2524 SE 8th Ave./2525 SE 9th Ave., Portland, OR 97202

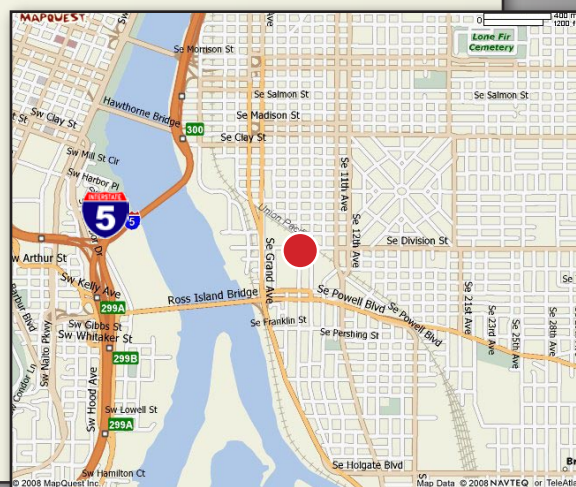
FEATURES

- From ± 2,776 SF - 12,332 SF is available
- Off street parking
- Open office area
- Grade-level loading door
- Minutes to Downtown and I-5
- 16' clear height in warehouse
- Floor plan on reverse side

RATE

- \$.45 Shell /\$.70 Office PSF Monthly NNN

Available	Shell ± SF	Office ± SF
2508 SE 8 th	3,771	700
2516 SE 8 th	3,933	640
2524 SE 8 th	2,776	469
2516-24 SE 8 th	6,709	1,109
2525 SE 9 th	5,623	N/A



Norris & Stevens

621 SW Morrison St., Ste. 800
Portland, OR 97205
503.223.3171 - Ph. / 503.228.2136 - Fx.
www.norris-stevens.com

For More Information or a Property Tour, Please Contact:

Greg Nesting
gregn@norris-stevens.com

Aaron Watt
aaronw@norris-stevens.com

Information contained herein has been obtained from others and considered to be reliable; however, a prospective purchaser or lessee is expected to verify all information to his/her own satisfaction.

TCN
WORLDWIDE

SERVICE/INDUSTRIAL FOR LEASE

Central Eastside Business Center

