

# FOR SALE

Approximately 11.73 acres

## Hermiston Apartment Land



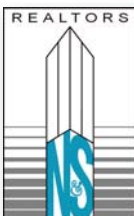
- Zoned: R-3 Multi-Family
- 20 units per acre are allowed
- 231 units are possible
- Approximately \$8,132 "per door"
- Possible "Conditional Use" obtainable for manufactured home park
- Flat topography
- Umatilla County
- Boundary Survey completed June 2005

Hermiston is Eastern Oregon's fastest growing town. It's an ideally located transportation network serving agricultural, industrial and retail distribution needs. Hermiston is also known as the "gateway" to a wide variety of outdoor activities including fishing, water sports, hunting and winter sports.

### FEATURES

- Convenient to Hermiston's newly developing retail area
- Within walking distance to Super Wal-Mart
- Strong demographics and traffic counts
- Entrance to the property is off the convergence of NE 6<sup>th</sup> Street and NE Aspen Drive

OFFERED AT: **\$1,878,400.<sup>00</sup> / \$3.68 per Sq Ft**



**Norris & Stevens**

621 SW Morrison St., Ste. 800  
Portland, OR 97205  
503.223.3171 - Ph. / 503.228.2136 - Fx.  
[www.norris-stevens.com](http://www.norris-stevens.com)

For More Information, please contact:

**Steve Mack**  
[stevem@norris-stevens.com](mailto:stevem@norris-stevens.com)

**Tom McDowell**  
[tomm@norris-stevens.com](mailto:tomm@norris-stevens.com)

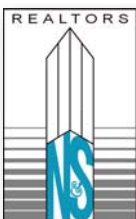
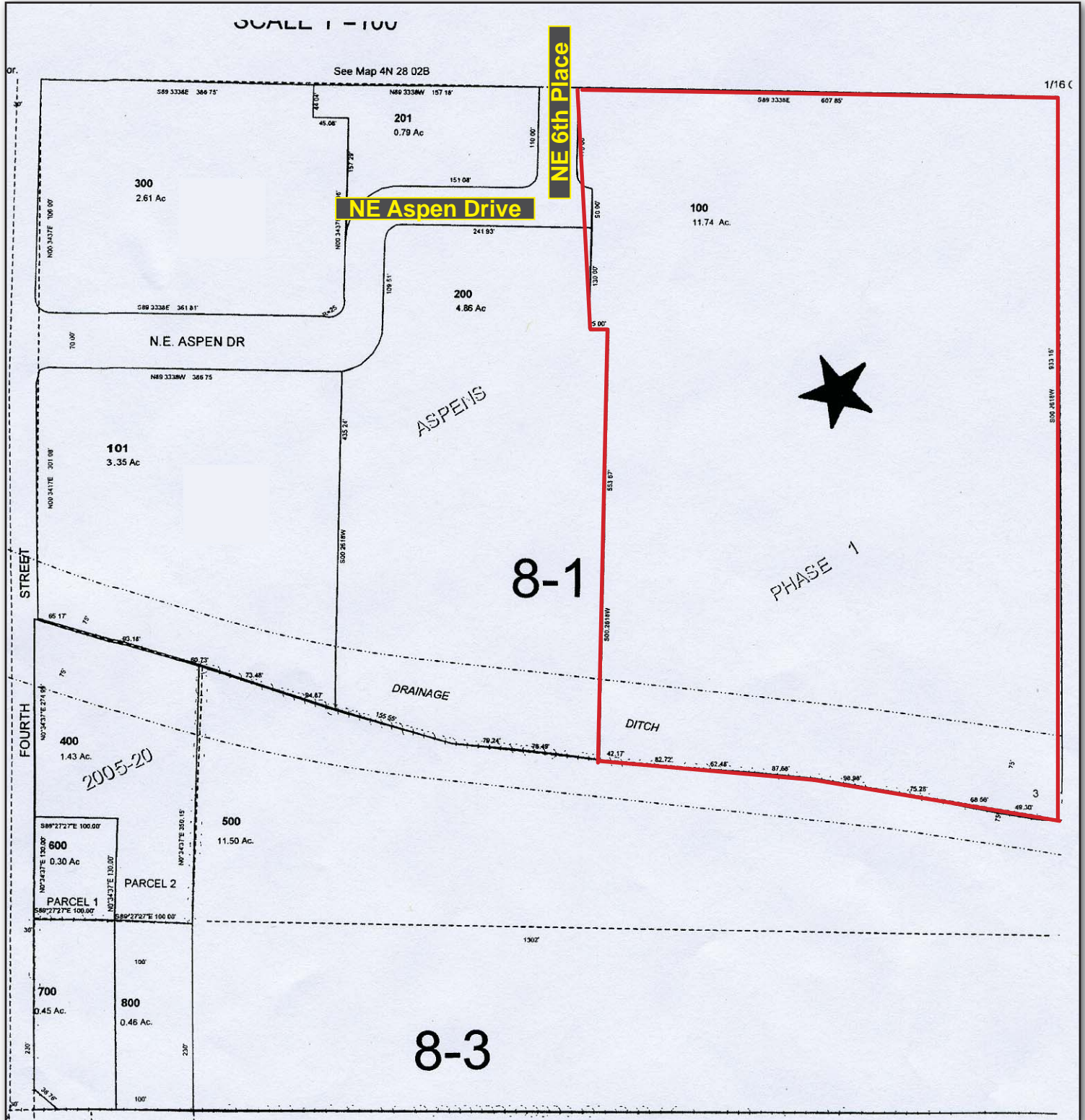
Information contained herein has been obtained from others and considered to be reliable; however, a prospective purchaser or lessee is expected to verify all information to his/her own satisfaction.

**TCN**  
WORLDWIDE

# FOR SALE

Approximately 11.73 acres

# Hermiston Apartment Land



## Norris & Stevens

621 SW Morrison St., Ste. 800  
Portland, OR 97205  
503.223.3171 - Ph. / 503.228.2136 - Fx.  
www.norris-stevens.com

For More Information, please contact:

**Steve Mack**  
stevem@norris-stevens.com

**Tom McDowell**  
tomm@norris-stevens.com