

THE ARNESON BUILDING

SALE

FOR A USER OR INVESTOR

WITH OR WITHOUT
± 20,000 SF TENANT*



4350 SW Galewood Street | Lake Oswego, OR 97035

SALE PRICE

\$3,800,000 (\$122.76 PSF)

BUILDING SIZE

± 30,954 SF

LAND AREA

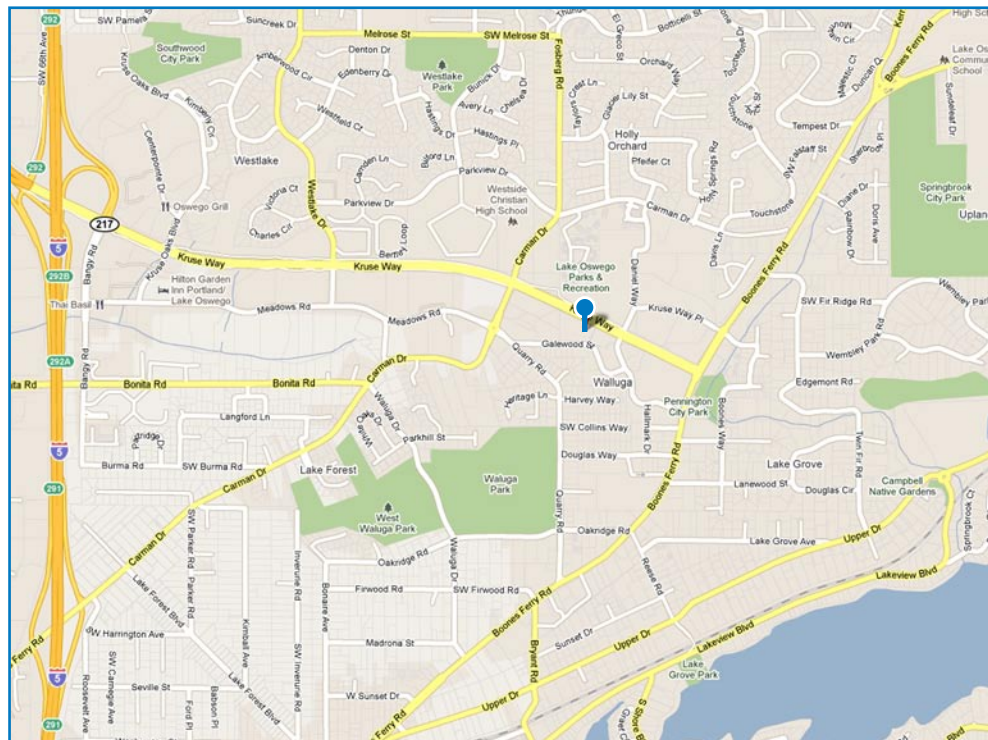
± 2.18 acres (±94,961 SF)

*TENANT

Lease Expires August 2012

INVESTMENT HIGHLIGHTS

- Steel Frame Building
- Two Story Elevator Served
- Kruse Way Neighborhood
- Outdoor Deck & Patio
- Gym with Lockers & Showers
- Adjacent to Food & Shopping



Norris & Stevens

Inc.

621 SW Morrison Street, Suite 800
Portland, OR 97205
503.223.3171 - Ph. | 503.228.2136 - Fx.
www.norris-stevens.com

For More Information or a Property Tour, Please Contact:

Thomas McDowell
503.225.8473
tomm@norris-stevens.com

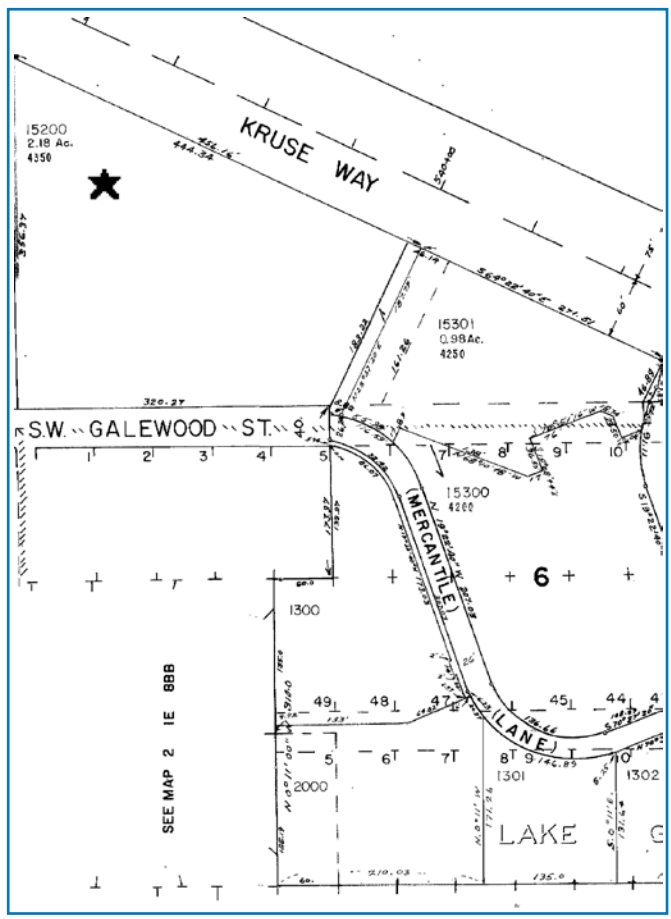
Information contained herein has been obtained from others and considered to be reliable; however, a prospective purchaser or lessee is expected to verify all information to his/her own satisfaction.

TCN
WORLDWIDE

THE ARNESON BUILDING

SALE

4350 SW Galewood Street | Lake Oswego, OR 97035



Norris & Stevens
Inc.
621 SW Morrison Street, Suite 800
Portland, OR 97205
503.223.3171 - Ph. | 503.228.2136 - Fx.
www.norris-stevens.com

For More Information or a Property Tour, Please Contact:

Thomas McDowell
503.225.8473
tomm@norris-stevens.com

Information contained herein has been obtained from others and considered to be reliable; however, a prospective purchaser or lessee is expected to verify all information to his/her own satisfaction.

