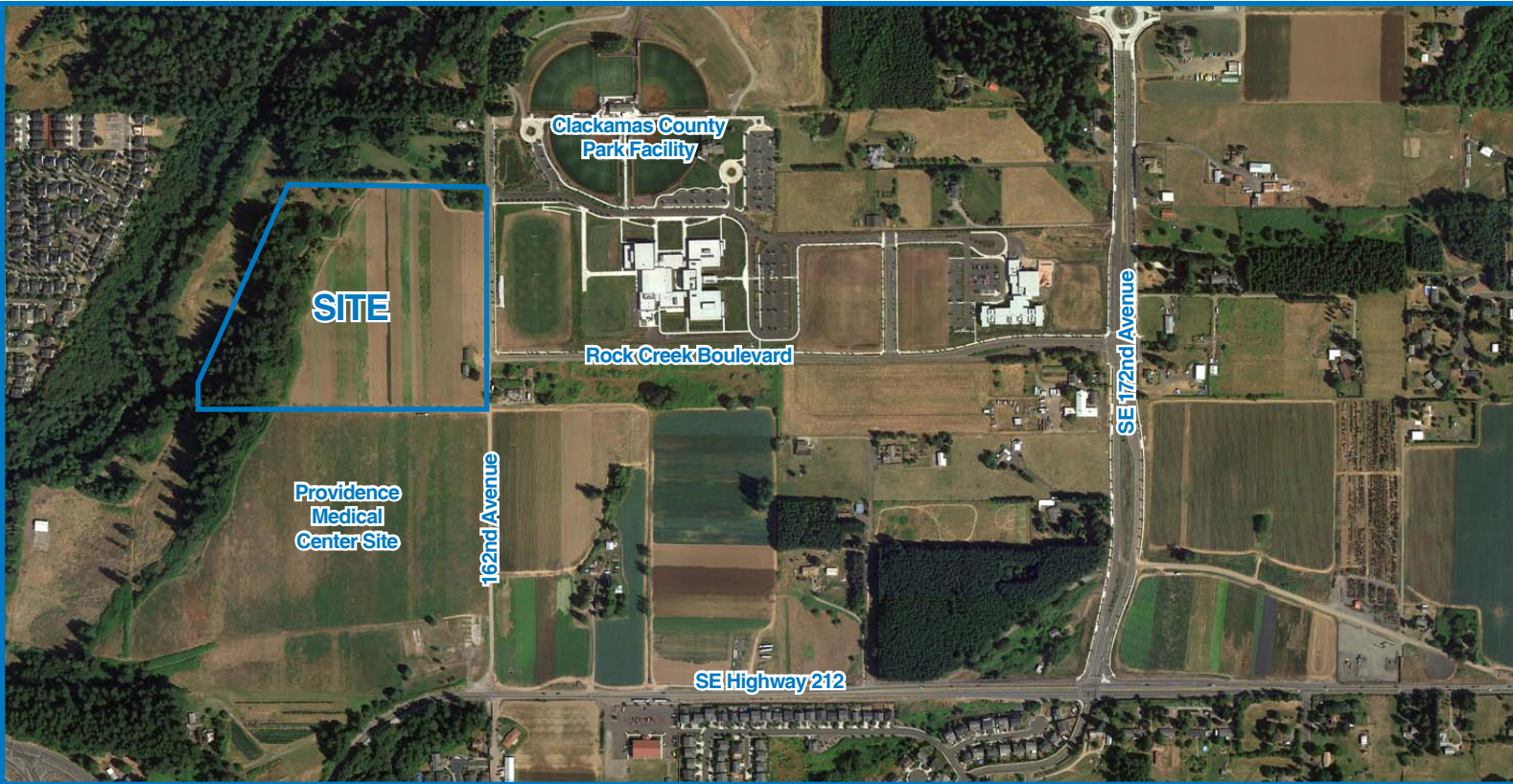


# Happy Valley Land

14941 SE 162nd Avenue | Happy Valley, OR 97015

# FOR SALE

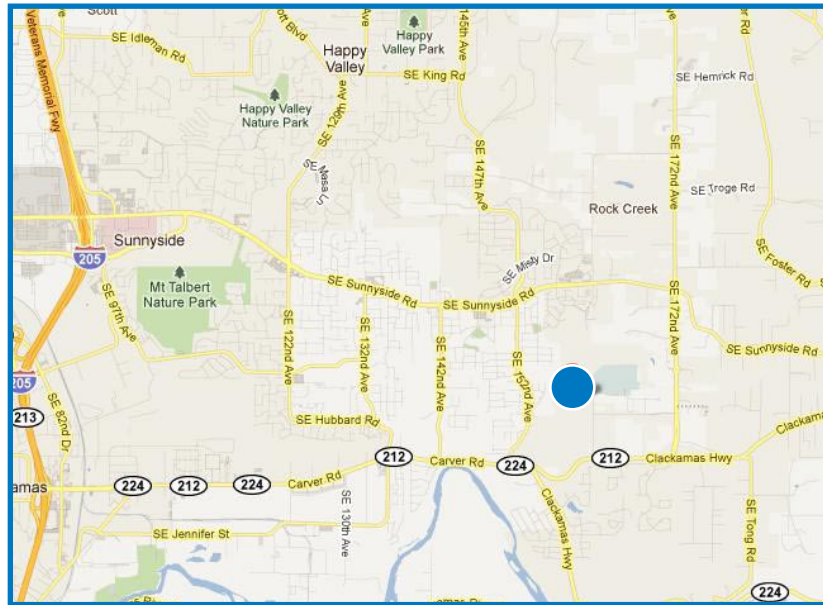


## FEATURES

- ± 33.21 Acres
- Zoned RC-ME (Rock-Creek Mixed Employment)
- SE 162nd Avenue & Rock Creek Boulevard Access
- Directly adjacent to future Providence Medical Center Site

## PRICE

- \$4,900,000 (\$3.39/SF)



**Norris & Stevens**  
Inc.



Information contained herein has been obtained from others and considered to be reliable; however, a prospective purchaser or lessee is expected to verify all information to his/her own satisfaction.

For More Information or a Property Tour, Please Contact:

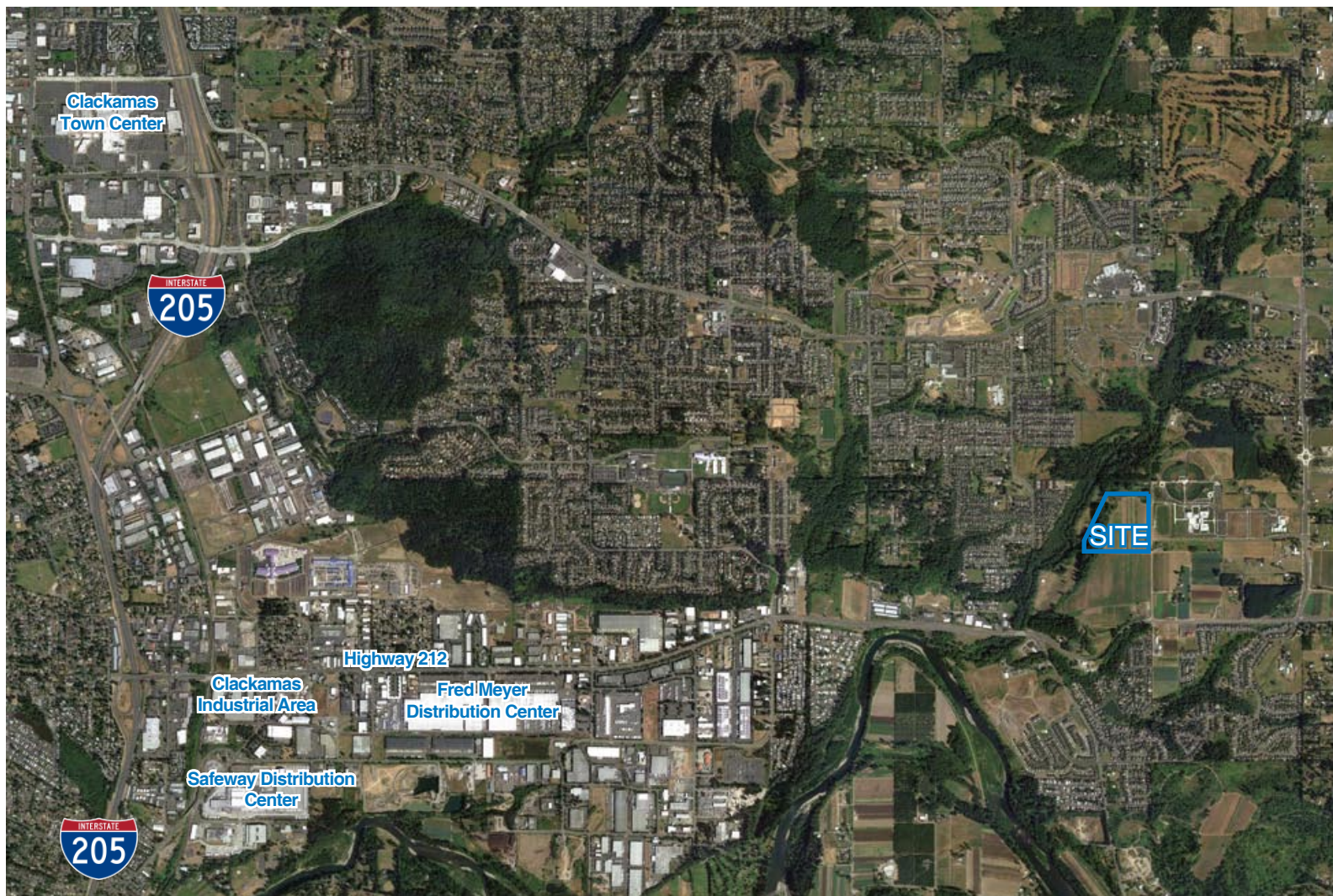
**Greg Nesting**  
gregn@norris-stevens.com

**Andrew Bean**  
andrewb@norris-stevens.com

621 SW Morrison St., Suite 800 | Portland, OR 97205  
Office: 503.223.3171 | Fax: 503.228.2136

14941 SE 162nd Avenue | Happy Valley, OR 97015

**FOR  
SALE**



- Adjacent to new sewer truck line with lateral tie-ins in place.
- RC-ME Zoning allows many uses; assisted living health, recreation, education and spiritual facilities, retail, industrial, office, medial office, etc.
- Please visit [www.ci.happy-valley.or.us](http://www.ci.happy-valley.or.us) for more information.
- Gently sloping topography.



**Norris &  
Stevens**  
Inc.

**TCN**  
WORLDWIDE

For More Information or a Property Tour, Please Contact:

**Greg Nesting**  
[gregn@norris-stevens.com](mailto:gregn@norris-stevens.com)

**Andrew Bean**  
[andrewb@norris-stevens.com](mailto:andrewb@norris-stevens.com)

621 SW Morrison St., Suite 800 | Portland, OR 97205  
Office: 503.223.3171 | Fax: 503.228.2136

Information contained herein has been obtained from others and considered to be reliable; however, a prospective purchaser or lessee is expected to verify all information to his/her own satisfaction.